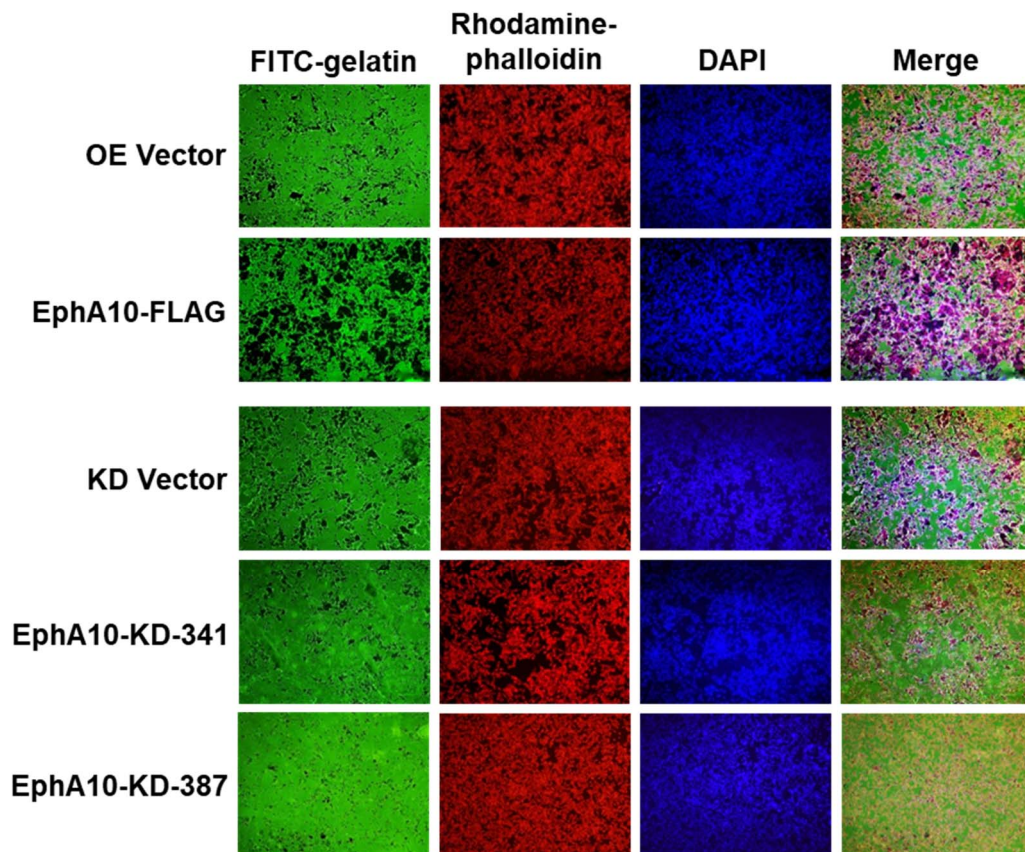


## Supporting Information



**Figure S1. Gelatin degradation in EphA10-overexpressing or -silencing MIA PaCa-2 cells.**

MIA PaCa-2 cells were plated on FITC-gelatin (green)-coated cover glasses and incubated for 48 h at 37°C. The cells stained with rhodamine-phalloidin (red) and DAPI (blue) were analyzed by fluorescence microscopy ( $\times 100$ ).