

Supporting Information

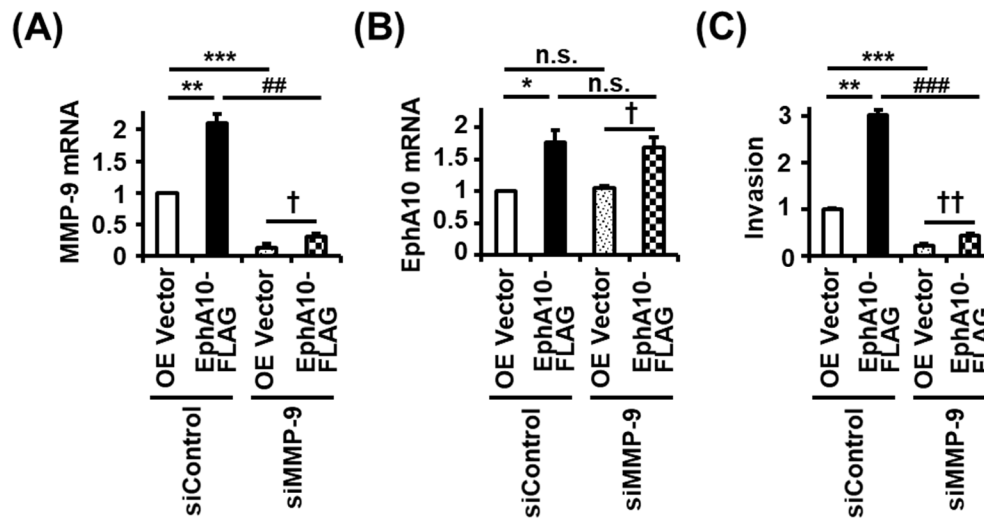


Figure S2. Effect of MMP-9 knockdown on invasion of MIA PaCa-2 cells with or without EphA10 overexpression.

Control siRNA (siControl) and human MMP-9 siRNA (siMMP-9) mixtures were transfected to MIA PaCa-2 cells infected with lentiviruses for overexpression vector control (OE Vector) and EphA10 overexpression (EphA10-FLAG). After 2 days, the cells were analyzed for mRNA levels of MMP-9 (A) and EphA10 (B) using quantitative RT-PCR and for invasion assay (C). Each bar represents the mean \pm standard deviation from three independent experiments. * $P < 0.05$, ** $P < 0.01$, *** $P < 0.001$ vs. siControl and OE vector control; † $P < 0.05$, †† $P < 0.01$, vs. siMMP-9 and OE vector control; and ## $P < 0.01$, ### $P < 0.001$ vs. siControl and EphA10-FLAG.