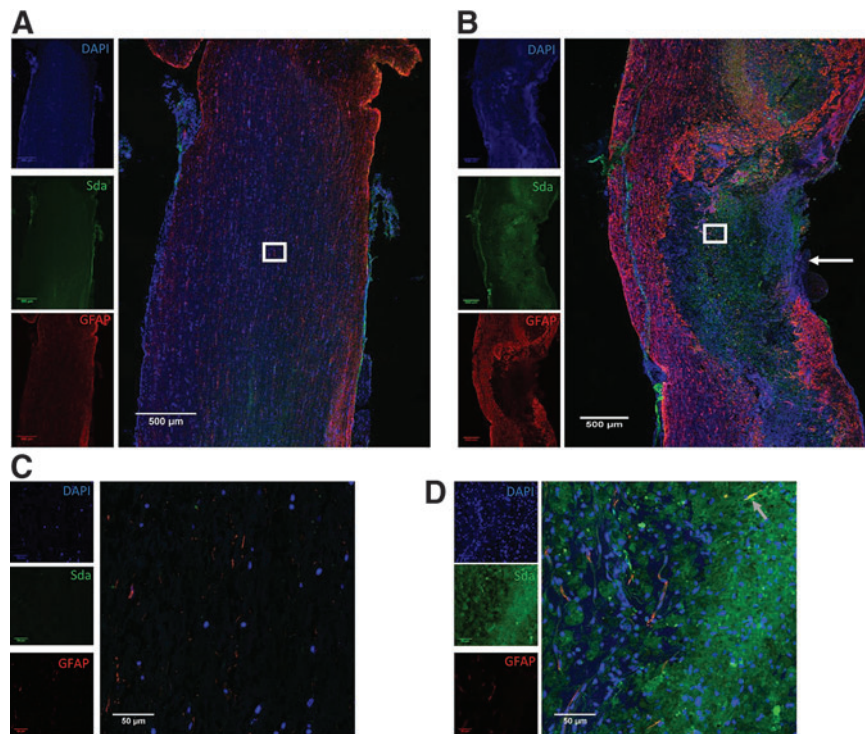


SUPPLEMENTARY FIG. S2. Histology of CD8 and Sda on spinal cord. Low-magnification images show T10 area from (A) sham and (B) SCI 14 DPI. (C) High-magnification image to show boxed area from sham. (D) High-magnification image to show boxed area from SCI. Blue (DAPI), green (Sda), red (CD8). Limited co-labeling of CD8 and Sda was observed. DAPI, 4',6-diamidino-2-phenylindole; DPI, days post-injury; SCI, spinal cord injury.



SUPPLEMENTARY FIG. S3. Limited co-localization of Sda with GFAP-positive cells. Low-magnification images show T10 area from (A) sham and (B) SCI 14 DPI indicated by arrow on SCI. (C) High-magnification image to show boxed area from sham. (D) High-magnification image to show boxed area from SCI 14 DPI; arrow points to an Sda, GFAP double-positive cell. Blue (DAPI), green (Sda), red (GFAP). Limited co-labeling of Sda and GFAP was observed. DAPI, 4',6-diamidino-2-phenylindole; DPI, days post-injury; GFAP, glial fibrillary acidic protein; SCI, spinal cord injury.