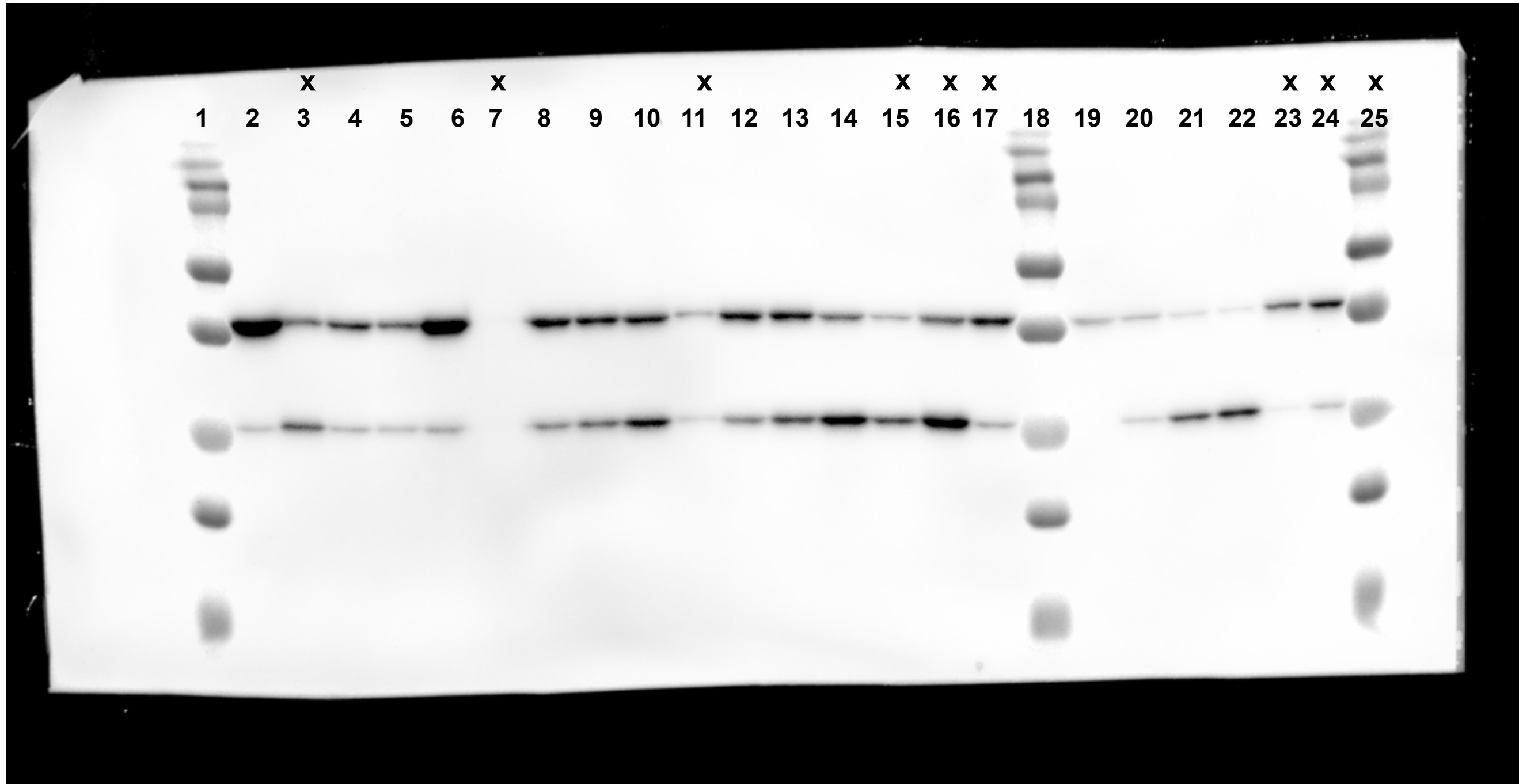


WY2520 (lys-met-)													WY2521 (lys-), 8 hrs					
	24 hr					48 hr				72 hr								
lys	+	+	-	-	+	+	-	-	+	+	-	-	+	+	-	+	-	lys
orgS	+	+	+	-	-	+	+	-	-	+	+	-	-	+	+	-	-	orgS
nitrogen	+	-	+	+	+	-	+	+	+	-	+	+	+	+	+	-	-	nitrogen



Lanes 18-22 from this blot were used in Fig 2B

18: Molecular weight ladder

19: exponential WY2521 before starvation

20: WY2521 starved only for lysine for 8 hours

21: WY2521 starved only for nitrogen for 8 hours

22: WY2521 starved for both lysine and nitrogen for 8 hours

Band intensities from lanes 1-14 excluding those marked with an "x" were used for analysis plotted in S12A Fig and provided in S16 Data

1,18: Molecular weight ladder

2: exponential WY2520 before starvation

4,8,12: WY2520 starved of lysine for 24, 48 and 72 hours, respectively

5,9,13: WY2520 starved of both lysine and organosulfurs for 24, 48 and 72 hours, respectively

6,10,14: WY2520 starved only of organosulfurs for 24, 48 and 72 hours, respectively

The detailed protocol is provided under "Autophagy Assay" in Methods

TCA-precipitated cell lysates from *S. cerevisiae* were loaded in each lane

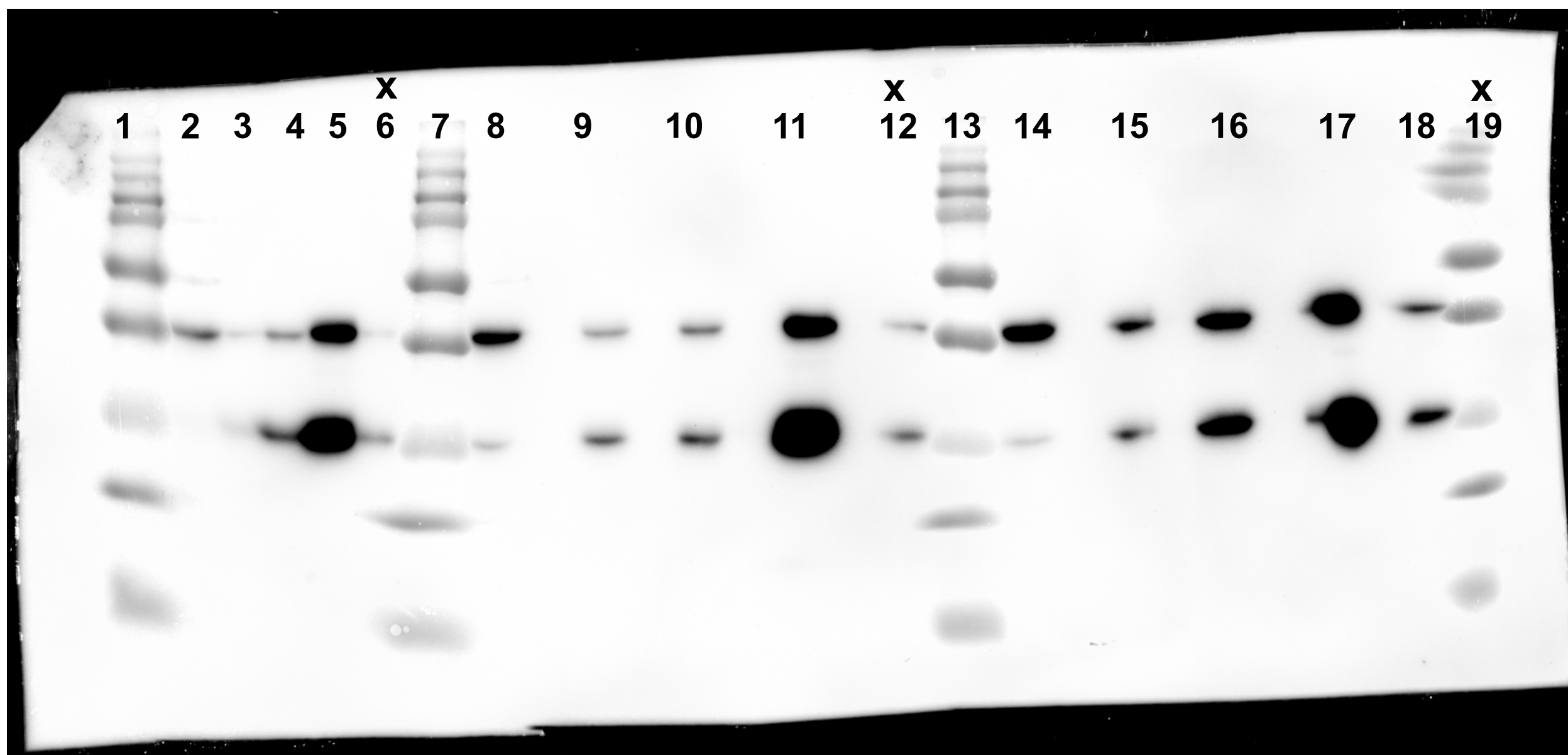
Blots were treated with anti-GFP (JL-8) primary and HRP-conjugated anti-mouse secondary

Image is an overlay of the colorimetric image of the protein ladder and chemiluminescence imaging of the stained protein bands



gel date: 2020-03-03

	replicate 1					replicate 2					replicate 3					
lys	+	-	-	+	+	+	-	-	+	+	+	-	-	+	+	lys
orgS	+	+	-	-	+	+	+	-	-	+	+	+	-	-	+	orgS
nitrogen	+	+	+	+	-	+	+	+	+	-	+	+	+	+	-	nitrogen



**Band intensities from all lanes except those marked with an "x" were used for analysis plotted in S12B-C Figs and provided in S16 Data.**

1,7,13,19: Molecular weight ladder

2,8,14: exponential WY2520 before starvation

3,9,15: WY2520 starved of lysine for 72 hours

4,10,16: WY2520 starved of both lysine and organosulfurs for 72 hours

5,11,17: WY2520 starved only of organosulfurs for 72 hours

The detailed protocol is provided under "Autophagy Assay" in Methods

TCA-precipitated cell lysates from *S. cerevisiae* were loaded in each lane

Blots were treated with anti-GFP (JL-8) primary and HRP-conjugated anti-mouse secondary

Image is an overlay of the colorimetric image of the protein ladder and chemiluminescence imaging of the stained protein bands