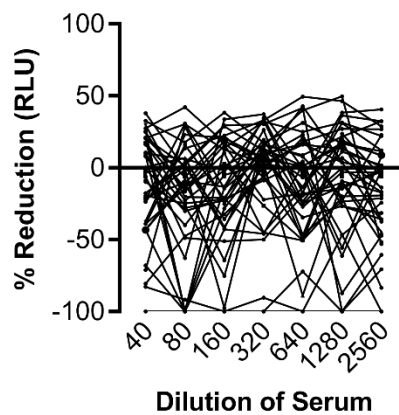


Supplementary Fig 1. Optimization of VSV-MERS-S pseudoparticles infection assay. (a) Impact of cell number on VSV-MERS-S pseudoparticles infectivity. Vero cells were seeded in 10 fold densities in 96 well plates. 1:200 dilution of VSV-MERS-CoV-S pseudoparticles were used to infect Vero cells. RLU was measured 24 hr post infection. (b) Relationship between Incubation time and Infectivity. Ten-fold serial dilutions of VSV-MERS-CoV-S pseudoparticles were used to infect Vero cells in 96 well plates. RLU was measured every 12 hours post infection. Results are expressed as average relative luciferase units (RLU) \pm standard deviation (SD) of triplicate wells from an experiment repeated twice with similar results. Error bars indicate standard deviation (SD).



Supplementary Fig 2. VSV-MERS-CoV-S pseudoparticles Limit of Detection. VSV-MERS-CoV-S pseudoparticles were pre-incubated with equal volumes of two-fold serial dilutions of 40 negative serum samples and then inoculated in triplicates onto Vero Cells. Luciferase activity was measured 24 hrs post infection. Results are normalized to the serum negative control pNHS. Results are expressed as percent Reduction in RLU average of three parallel wells from an experiment.