

Figure S1

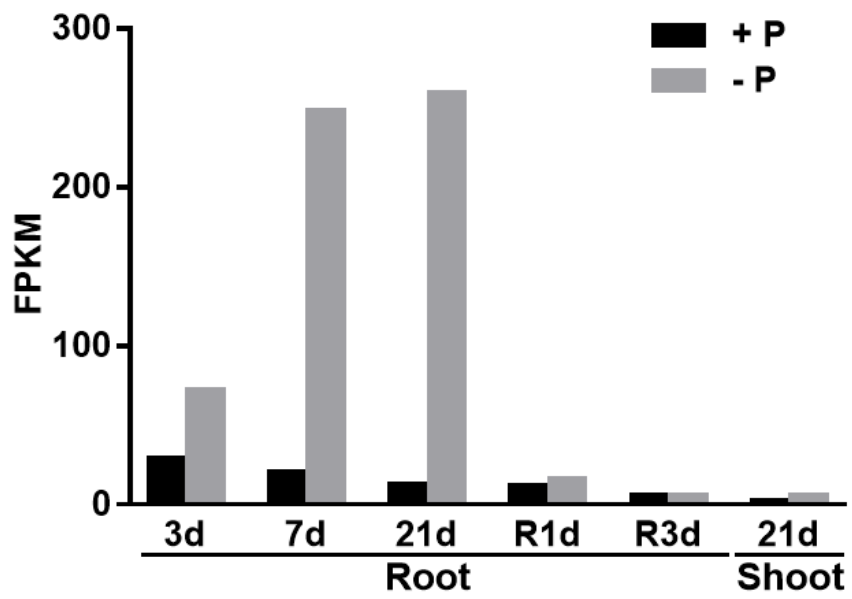


Figure S1. The expression of *OsPAP10c* in roots and shoot under Pi sufficient and deficient conditions.

Figure S2

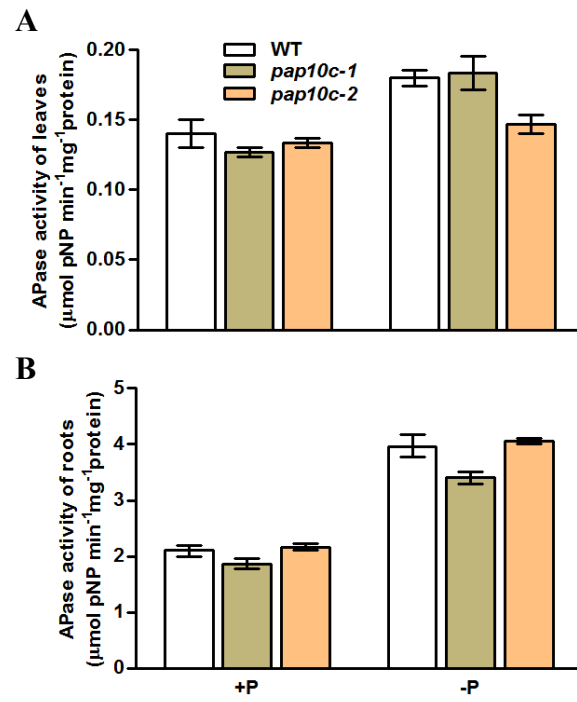


Figure S2. Acid phosphatase activities in leaves and roots of wild type (WT) and *pap10c* mutants.

Figure S3

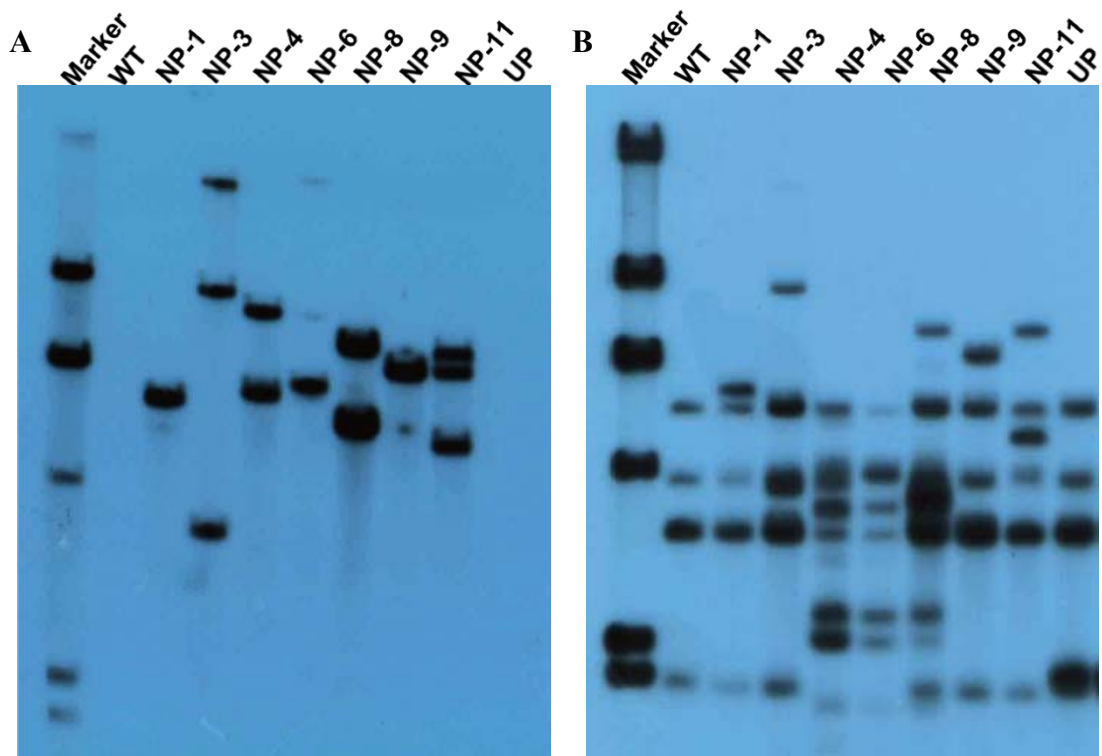


Figure S3. Southern blot analysis of WT and transgenic plants.

Figure 4

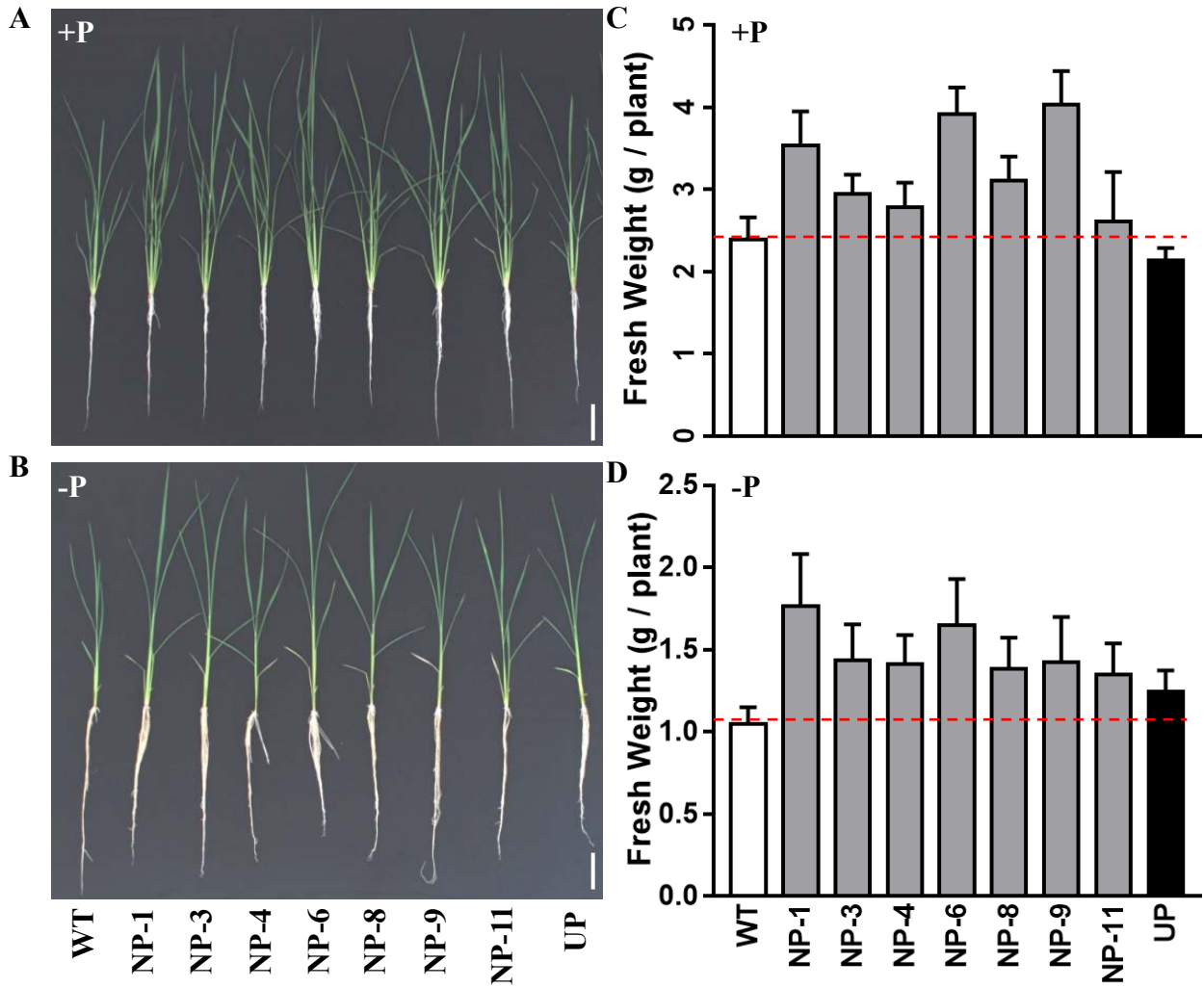


Figure S4. Phenotype of WT and transgenic plants under Pi sufficient and deficient conditions.

Figure S5

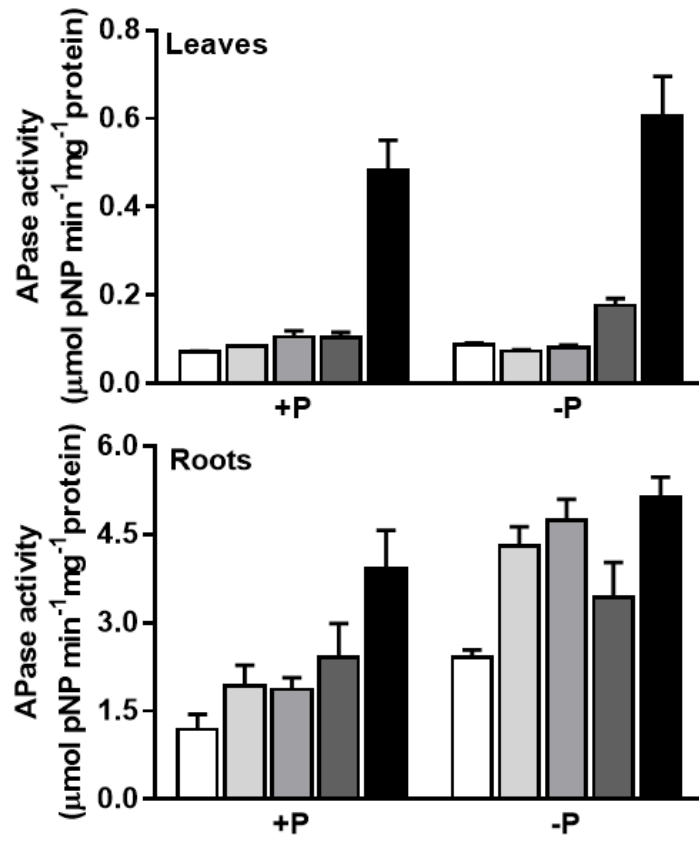


Figure S5. Acid phosphatase activities in leaves and roots of WT and transgenic plants under Pi sufficient and deficient conditions.

Figure S6

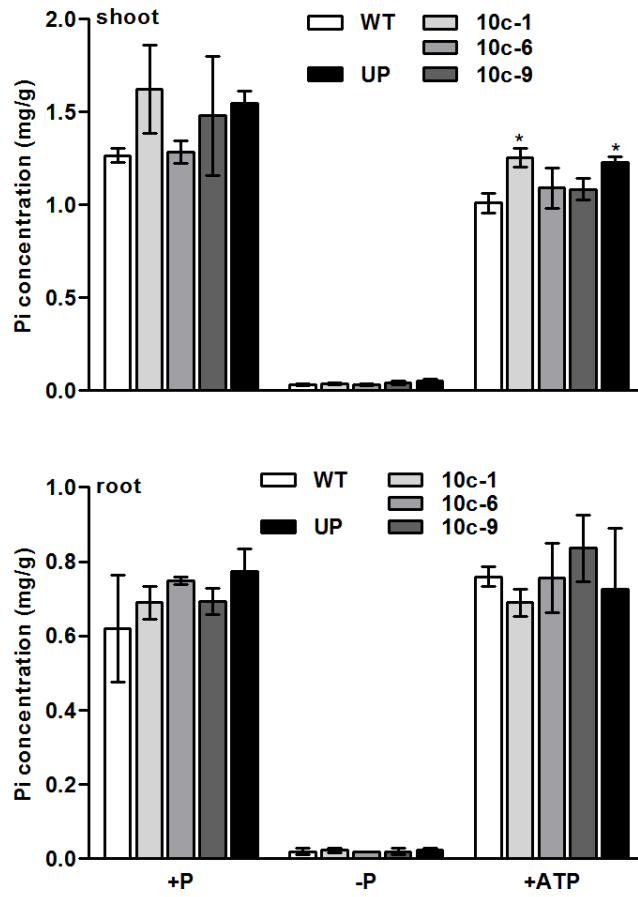


Figure S6. Pi concentration of WT and transgenic plants under Pi sufficient, deficient and ATP supply conditions.

Figure S7

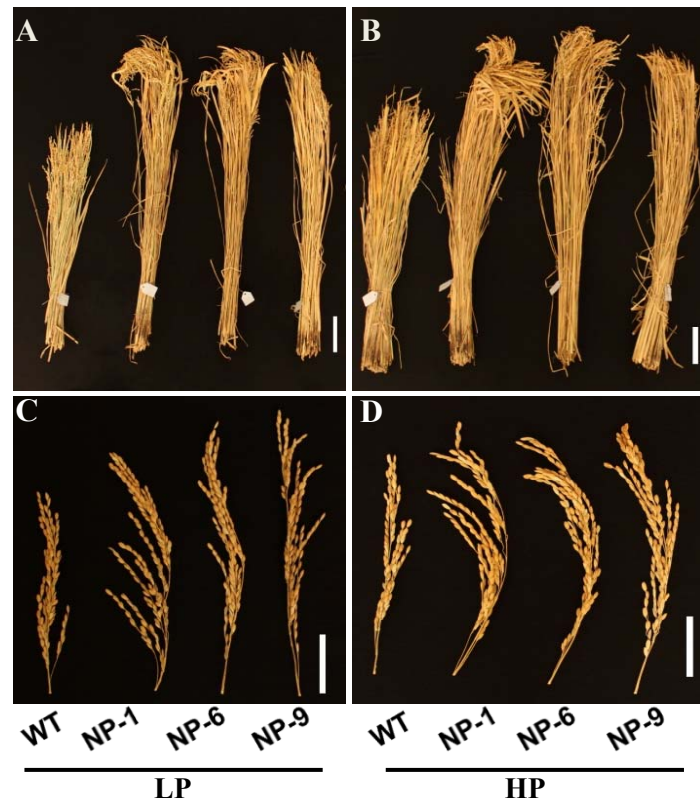


Figure S7. Growth performance and panicle size of WT and transgenic plants grown in the field, Bar = 10 cm.

Figure S8

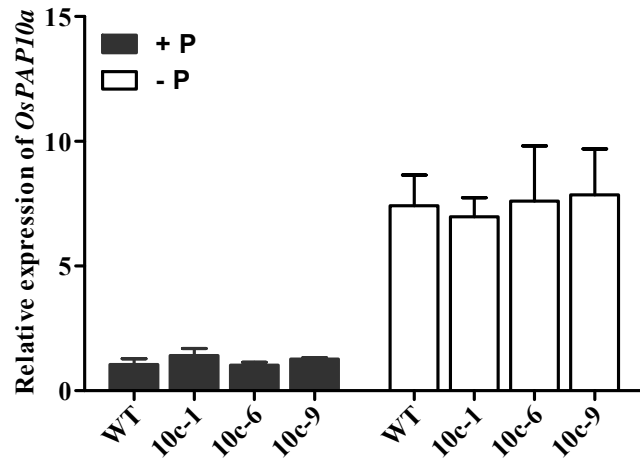


Figure S8. The expression of *OsPAP10a* in WT and *OsPAP10c* NP transgenic plants under Pi sufficient (+P) and deficient (-P) conditions.