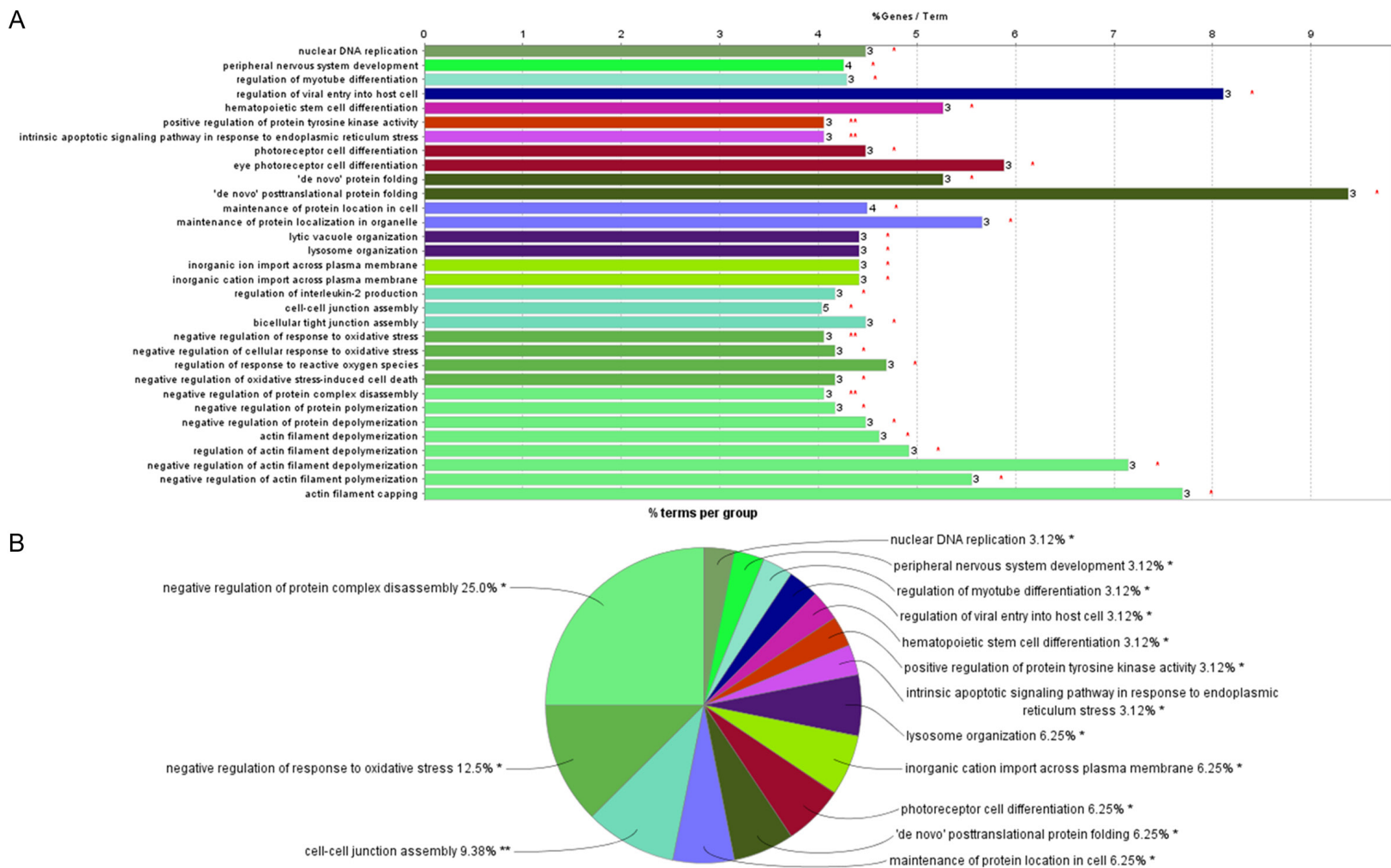
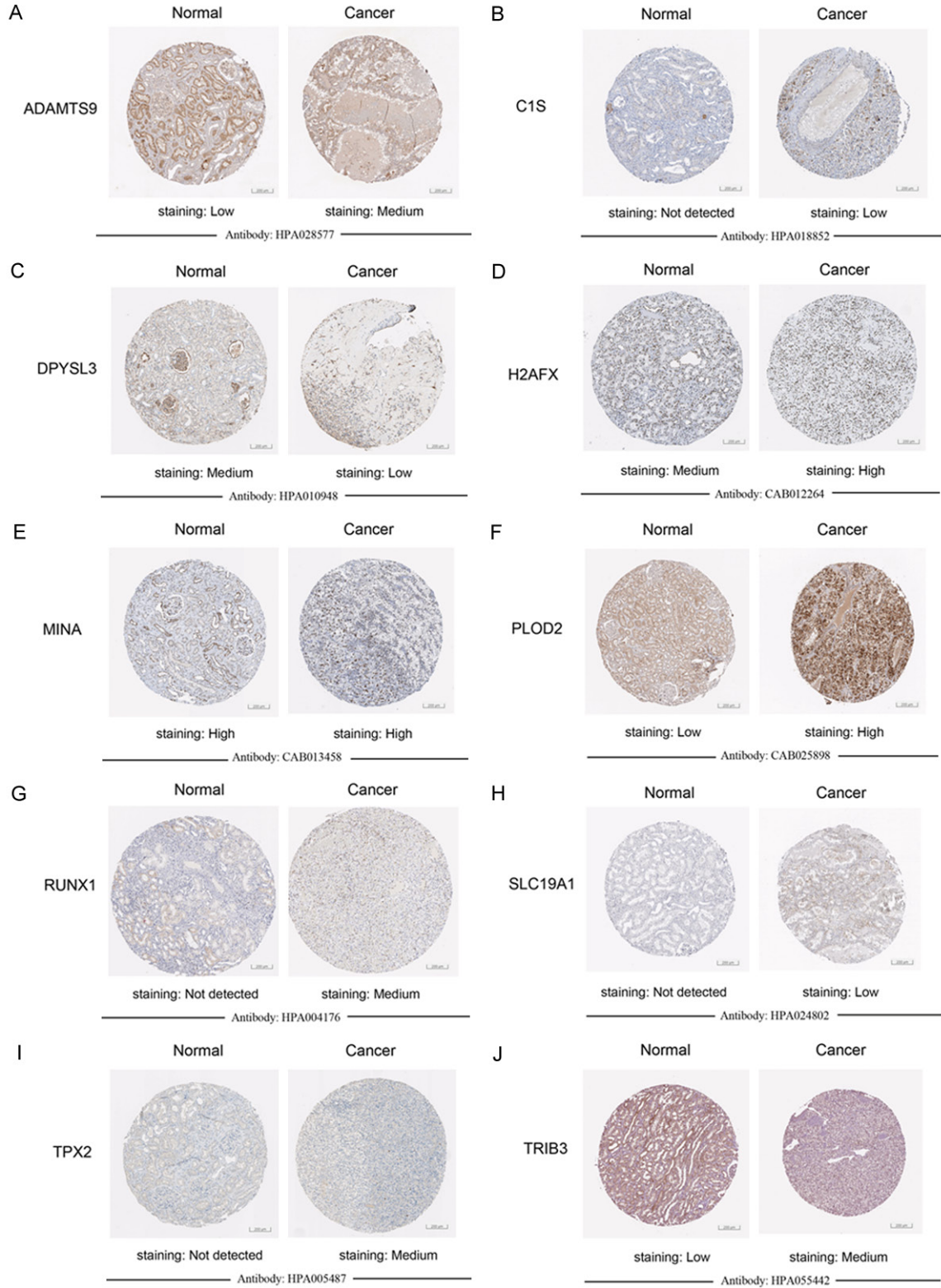


Metastasis-related signatures in ccRCC



Supplementary Figure 1. The detailed functional annotations and classification pie charts using CluePedia from Cytoscape are provided. Of the ClueGO analysis, 25.0% of terms belonged to the negative regulation of protein complex disassembly, 12.5% to negative regulation of response to oxidative stress, 9.38% to cell-cell junction assemble, 6.25% to maintenance of protein location in cell, 6.25% to photoreceptor cell differentiation, 6.25% inorganic cation import across plasma membrane, and 6.25% to lysosome organization.

Metastasis-related signatures in ccRCC



Supplementary Figure 2. IHC staining was used to describe differential proteomic expression of *ADAMTS9*, *C1S*, *DPYSL3*, *H2AFX*, *MINA*, *PLOD2*, *RUNX1*, *SLC19A1*, *TPX2*, *TRIB3*. Antibody staining density described staining status between normal and tumor samples.