



Supporting Information

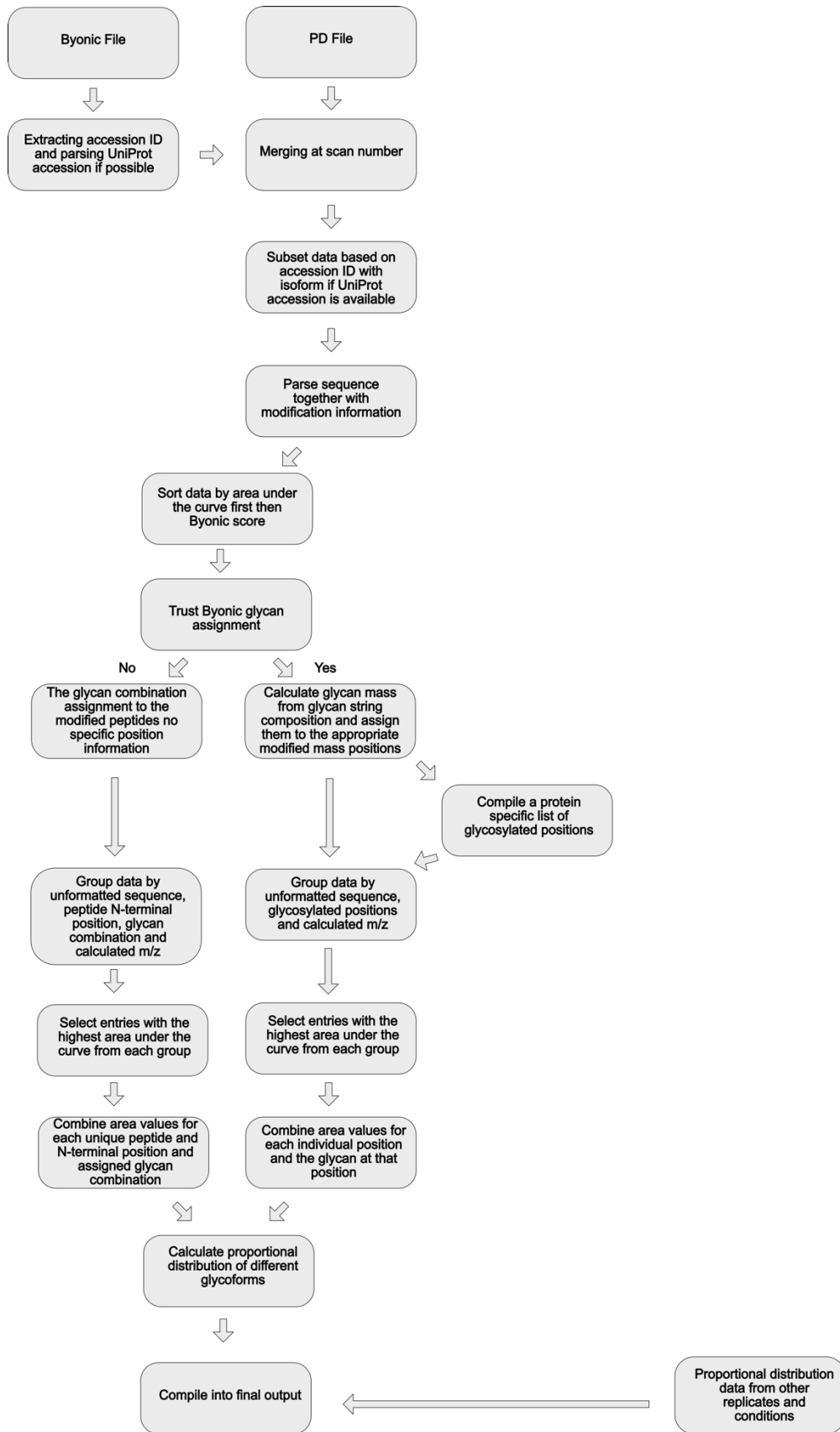
for

GlypNirO: An automated workflow for quantitative *N*- and *O*-linked glycoproteomic data analysis

Toan K. Phung, Cassandra L. Pegg and Benjamin L. Schulz

Beilstein J. Org. Chem. **2020**, *16*, 2127–2135. [doi:10.3762/bjoc.16.180](https://doi.org/10.3762/bjoc.16.180)

GlypNirO workflow overview



Supplementary Figure S1: GlypNirO workflow overview.