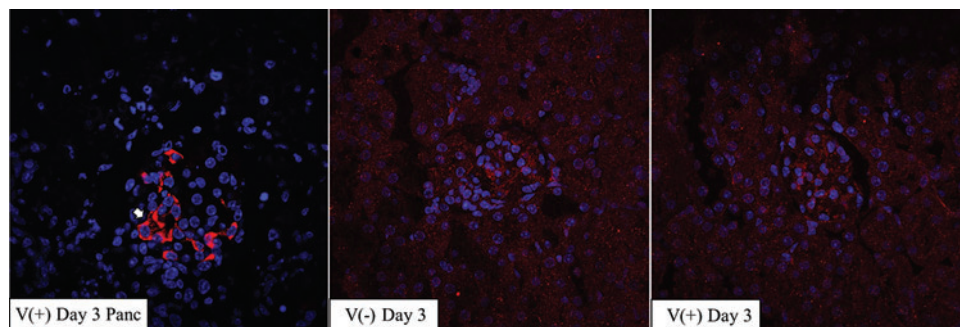


SUPPLEMENTARY FIG. S4. IRF activation following CVB4 inoculation. Western blot analyses of 200 μ g of total protein immunoprecipitated with pSer antibody probed for (A) IRF5 3 days and (B) IRF7 7 days postinoculation. Separately, 20 μ g of total protein was probed with total IRF5, IRF7, and α Tubulin antibodies as protein loading controls. V⁺ indicates 10 μ g lysate from CVB4-inoculated NOD pancreas. Densitometry analysis of phospho/total, phospho/loading control, and total/loading control is depicted for (C) IRF7 ($n=4-6$). IP, immunoprecipitated; IRF, interferon regulatory factor.



SUPPLEMENTARY FIG. S5. TLR3 localization. Representative images of immunofluorescence of CVB4-inoculated pancreas and noninoculated and CVB4-inoculated mouse kidneys 3 days postinoculation. *Arrowhead* points to area with TLR3 protein expression (images taken at 600 \times magnification; $n=8$).