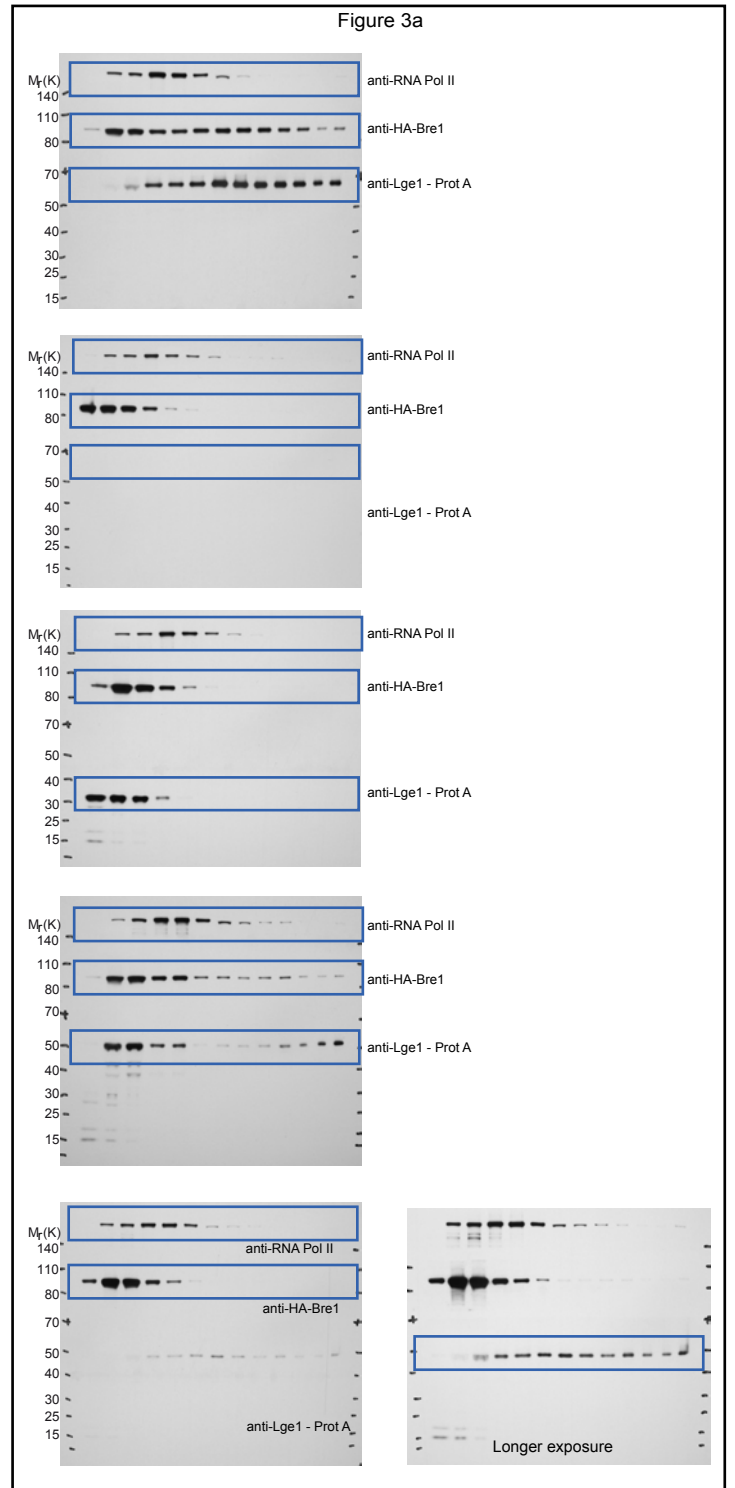
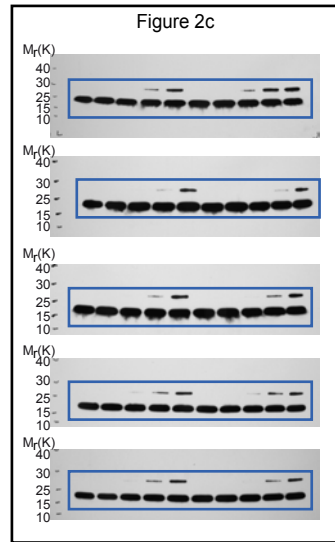
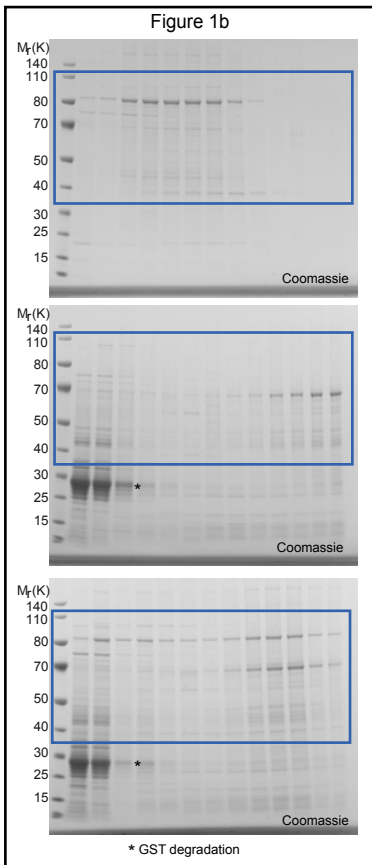


## Supplemental Table

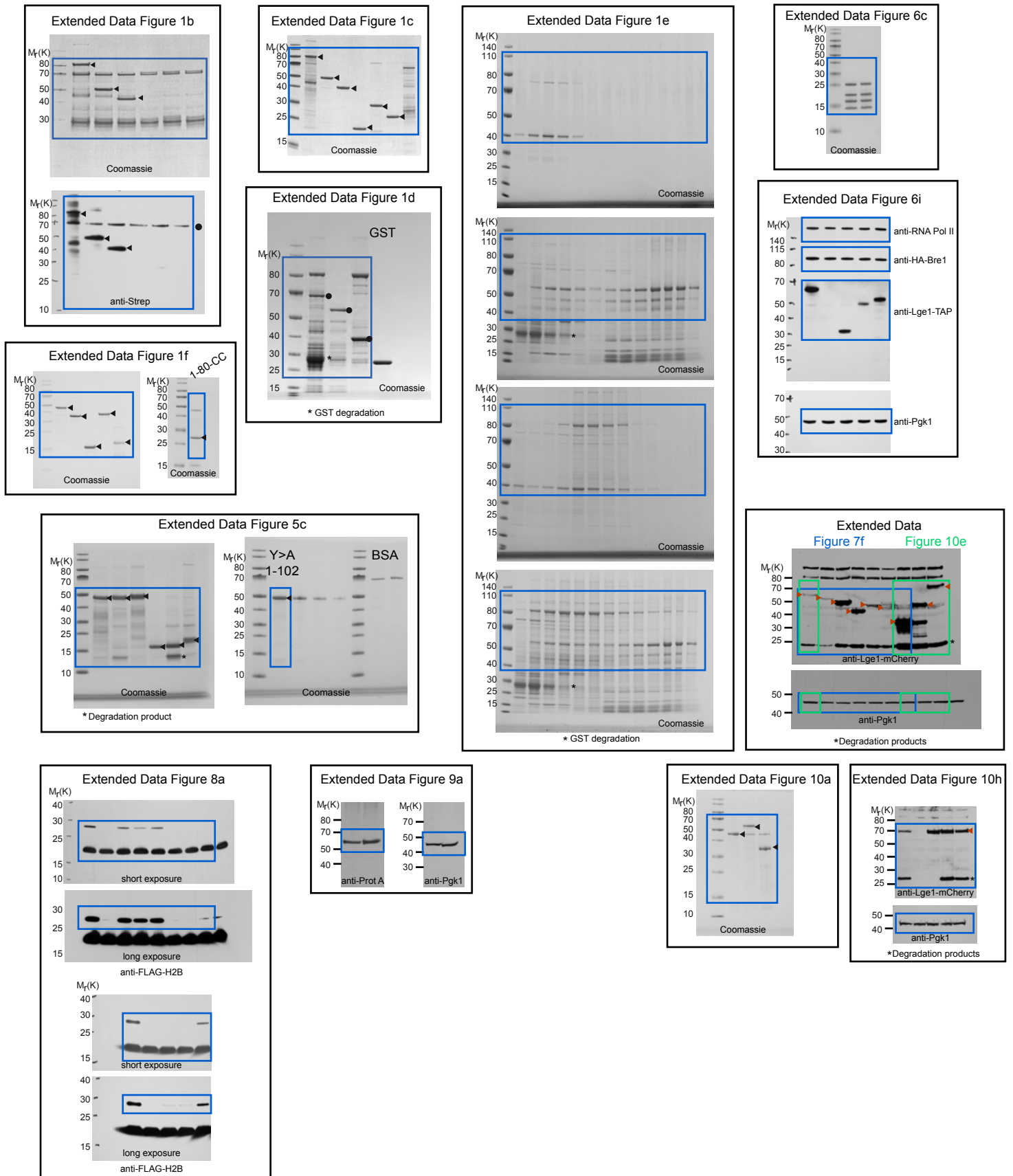
<b>Yeast strains</b>		
<i>S. cerevisiae</i> strain BY4741 WT, genotype: <i>MATa</i> ; <i>his3Δ1</i> ; <i>leu2Δ0</i> ; <i>met15Δ0</i> ; <i>ura3Δ0</i>	EUROSCARF	Y00000
<i>S. cerevisiae</i> strain <i>lge1Δ</i> , genotype: <i>MATa</i> ; <i>his3Δ1</i> ; <i>leu2Δ0</i> ; <i>met15Δ0</i> ; <i>ura3Δ0</i> ; <i>lge1Δ::natNT2</i>	This paper	N/A
<i>S. cerevisiae</i> strain <i>bre1Δ lge1Δ</i> , genotype: <i>MATa</i> ; <i>ura3Δ0</i> ; <i>leu2Δ0</i> ; <i>his3Δ1</i> ; <i>met15Δ0</i> ; <i>bre1Δ::natNT2</i> ; <i>lge1Δ::kanMX6</i>	This paper	N/A
<i>S. cerevisiae</i> strain <i>bre1Δ lge1Δ Nup188-mCh</i> , genotype: <i>MATa</i> ; <i>ura3Δ0</i> ; <i>leu2Δ0</i> ; <i>his3Δ1</i> ; <i>met15Δ0</i> ; <i>bre1Δ::natNT2</i> ; <i>lge1Δ::kanMX6</i> ; <i>NUP188-mCherry::hphNT1</i>	This paper	N/A
<i>S. cerevisiae</i> strain <i>lge1Δ htz1Δ</i> , genotype: <i>MATa</i> ; <i>his3Δ1</i> ; <i>leu2Δ0</i> ; <i>met15Δ0</i> ; <i>ura3Δ0 lge1Δ::natNT2</i> ; <i>htz1Δ::hphNT1</i> ; <i>pRS316-LGE1-TAP</i>	This paper	N/A
<i>S. cerevisiae</i> strain <i>LGE1-TAP</i> , genotype: <i>MATa</i> ; <i>his3Δ1</i> ; <i>leu2Δ0</i> ; <i>met15Δ0</i> ; <i>ura3Δ0</i> ; <i>LGE1-TAP::HIS3MX6</i>	Dharmacon	YSC1178-202233656
<i>S. cerevisiae</i> strain <i>LGE1-TAP bre1Δ</i> , genotype: <i>MATa</i> ; <i>his3Δ1</i> ; <i>leu2Δ0</i> ; <i>met15Δ0</i> ; <i>ura3Δ0</i> ; <i>LGE1-TAP::HIS3MX6</i> ; <i>bre1Δ::natNT2</i>	This paper	N/A
<i>S. cerevisiae</i> strain <i>3HA-Bre1 (ADH1-prom)</i> , genotype: <i>MATa</i> ; <i>his3Δ1</i> ; <i>leu2Δ0</i> ; <i>met15Δ0</i> ; <i>ura3Δ0</i> ; <i>natNT2::ADHprom-3HA-BRE1</i>	This paper	N/A
<i>S. cerevisiae</i> strain <i>3HA-Bre1 lge1Δ</i> , genotype: <i>MATa</i> ; <i>his3Δ1</i> ; <i>leu2Δ0</i> ; <i>met15Δ0</i> ; <i>ura3Δ0</i> ; <i>natNT2::ADHprom-3HA-BRE1</i> ; <i>lge1Δ::kanMX6</i>	This paper	N/A
<i>S. cerevisiae</i> strain <i>FLAG-H2B lge1Δ</i> , genotype: <i>YZS276 MATa</i> ; <i>his3-11,-15 leu2-3</i> , <i>112 trp1-1 ura3-1 ade2-1 hta1-htb1::LEU2 hta2-htb2::pRS413-FLAG-HTB1-HTA1</i> ; <i>lge1Δ::natNT2</i>	This paper	N/A
<b>Recombinant DNA</b>		
Yeast plasmids are based on the pRS31X series	(Sikorski & Hieter 1989)	N/A
Plasmid: VC-Bre1: <i>pRS316-BRE1prom-VC-BRE1</i>	This paper	N/A
Plasmid: Lge1-VN: <i>pRS313-LGE1prom-LGE1-VN</i>	This paper	N/A
Plasmid: Lge1Δ1-80-VN: <i>pRS313-LGE1prom-LGE1Δ1-80-VN</i>	This paper	N/A
Plasmid: Lge1 CC-VN: <i>pRS313-LGE1prom-LGE1(243-332)-VN</i>	This paper	N/A
Plasmid: Lge1 IDR-VN: <i>pRS313-LGE1prom-LGE1(1-242)-VN</i>	This paper	N/A
Plasmid: NLS-Lge1 IDR-VN: <i>pRS313-LGE1prom-NUP60(1-24)-LGE1(1-242)-VN</i>	This paper	N/A
Plasmid: mGFP-Bre1: <i>pRS316-BRE1prom-mGFP-BRE1</i>	This paper	N/A
Plasmid: mGFP-Bre1: <i>pRS316-GPDprom-mGFP-BRE1</i>	This paper	N/A
Plasmid: Lge1-mCh: <i>pRS313</i> or <i>pRS316-LGE1prom-LGE1-mCherry</i>	This paper	N/A
Plasmid: Lge1-mCh: <i>pRS313-GPDprom-LGE1-mCherry</i>	This paper	N/A
Plasmid: Lge1Δ1-40-mCh: <i>pRS313</i> or <i>pRS316-LGE1prom-LGE1Δ1-40-mCherry</i>	This paper	N/A
Plasmid: Lge1Δ1-80-mCh: <i>pRS313</i> or <i>pRS316-LGE1prom-LGE1Δ1-80-mCherry</i>	This paper	N/A

Plasmid: Lge1 1-80-CC-mCh: <i>pRS313 / pRS316-LGE1prom-LGE1 1-80 – SRM – 243-332 -mCherry</i>	This paper	N/A
Plasmid: Lge1 IDR-mCh: <i>pRS313 or pRS316-LGE1prom-LGE1(1-242)-mCherry</i>	This paper	N/A
Plasmid: NLS-Lge1 IDR-mCh: <i>pRS313 / pRS316-LGE1prom-NUP60(1-24)-LGE1(1-242)-mCherry</i>	This paper	N/A
Plasmid: Lge1 CC-mCh: <i>pRS313 or pRS316-LGE1prom-LGE1(243-332)-mCherry</i>	This paper	N/A
Plasmid: LAF1 IDR-Lge1 CC-mCh: <i>pRS313 or pRS316-LGE1prom-LAF1(1-169)-LGE1(243-332)-mCherry</i>	This paper	N/A
Plasmid: WAC IDR-Lge1 CC-mCh: <i>pRS313 or pRS316-LGE1prom-WAC(1-318)-LGE1(243-332)-mCherry</i>	This paper	N/A
Plasmid: LAF1 IDR-Lge1 CC-VN: <i>pRS313-LGE1prom-LAF1(1-169)-LGE1(243-332)-VN</i>	This paper	N/A
Plasmid: WAC IDR-Lge1 CC-VN: <i>pRS313-LGE1prom-WAC(1-318)-LGE1(243-332)-VN</i>	This paper	N/A
Plasmid: LGE1 Y>A <sub>(1-80)</sub> -mCh: <i>pRS313 or pRS316-LGE1prom- LGE1 Y&gt;A<sub>(1-80)</sub> (Y4A, Y9A, Y12A, Y23A, Y38A, Y39A, Y45A, Y49A, Y53A, Y68A, Y69A, Y73A, Y79A, Y80A)-mCherry</i>	This paper	N/A
Plasmid: LGE1 Y>A <sub>(1-102)</sub> -mCh: <i>pRS313 or pRS316-LGE1prom-LGE1 Y&gt;A<sub>(1-102)</sub> (Y4A, Y9A, Y12A, Y23A, Y38A, Y39A, Y45A, Y49A, Y53A, Y68A, Y69A, Y73A, Y79A, Y80A, Y87A, Y95A, Y102A)-mCherry</i>	This paper	N/A
Plasmid: LGE1 R>K <sub>(1-80)</sub> -mCh: <i>pRS313 or pRS316-LGE1prom-LGE1(1-80) R&gt;K (R11K, R18K, R20K, R27K, R28K, R30K, R39K, R48K, R63K, R70K, R77K)-mCherry</i>	This paper	N/A
Plasmid: nTAP-Lge1: <i>pRS313-LGE1prom-nTAP-LGE1</i>	This paper	N/A
Plasmid: Lge1-TAP: <i>pRS313 or pRS316-Lge1prom-LGE1-TAP</i>	This paper	N/A
Plasmid: Lge1 CC-TAP: <i>pRS316-LGE1prom-LGE1(243-332)-TAP</i>	This paper	N/A
Plasmid: Lge1 IDR-TAP: <i>pRS316-LGE1prom-LGE1(1-242)-TAP</i>	This paper	N/A
Plasmid: Lge1Δ1-80-TAP: <i>pRS316-LGE1prom-LGE1Δ1-80-TAP</i>	This paper	N/A
Plasmid: <i>pFA6a-kanMX6</i>	(Longtine et al., 1998)	N/A
Plasmid: <i>pFA6a-natNT2</i>	(Janke et al., 2004)	N/A
Plasmid: <i>pFA6a-hphNT1</i>	(Janke et al., 2004)	N/A
Plasmid: <i>pYM-N8 (natNT2::ADHprom-3HA)</i>	(Janke et al., 2004)	N/A
<b><i>E. coli</i> protein expression plasmids</b>		
Plasmid: <i>pET24a – StrepII – BRE1 1-700</i>	(Turco et al, 2015)	N/A
Plasmid: <i>pET24a – StrepII – BRE1 308-700</i>	This paper	N/A
Plasmid: <i>pET24a – StrepII – BRE1 308-632</i>	This paper	N/A
Plasmid: <i>pET24a – StrepII – BRE1 308-462</i>	This paper	N/A
Plasmid: <i>pET24a – StrepII – BRE1 403-632</i>	This paper	N/A
Plasmid: <i>pET24a – StrepII – BRE1 435-632</i>	This paper	N/A
Plasmid: mGFP-Bre1: <i>pET21d – StrepII –mGFP-BRE1 (2-700)</i>	This paper	N/A
Plasmid: mGFP-Bre1 LBD: <i>pET21d – StrepII – mGFP- BRE1 (308-632)</i>	This paper	N/A
Plasmid: mGFP: <i>pET21d – StrepII - mGFP</i>	This paper	N/A

Plasmid: GST-Lge1: <i>pST50 Trc1 – GST – LGE1-StrepII</i>	This paper	N/A
Plasmid: GST-Lge1 IDR: <i>pST50 Trc1 – GST – LGE1 1-242 - StrepII</i>	This paper	N/A
Plasmid: GST-Lge1 CC: <i>pST50 Trc1 – GST – LGE1 243-332 - StrepII</i>	This paper	N/A
Plasmid: His-Lge1: <i>pPROEX HTb – 6xHis- TEV site – LGE1 1-332 - StrepII</i>	This paper	N/A
Plasmid: His-Lge1 IDR: <i>pPROEX HTb – 6xHis- TEV site – LGE1 1-242 - StrepII</i>	This paper	N/A
Plasmid His-Lge1 CC: <i>pPROEX HTb – 6xHis- TEV site – LGE1 243-332 - StrepII</i>	This paper	N/A
Plasmid His-Lge1 1-80: <i>pPROEX HTb – 6xHis- TEV site – LGE1 1-80 - StrepII</i>	This paper	N/A
Plasmid His-Lge1 $\Delta$ 1-80: <i>pPROEX HTb – 6xHis- TEV site – LGE1 81-332 - StrepII</i>	This paper	N/A
Plasmid His-Lge1 1-80-CC: <i>pPROEX HTb – 6xHis- TEV site – LGE1 1-80 – SRM – 243-332 - StrepII</i>	This paper	N/A
Plasmid Lge1 Y>A (original): <i>pUC57 – LGE1 1-332 (Y4A, Y9A, Y12A, Y23A, Y38A, Y39A, Y45A, Y49A, Y53A, Y68A, Y69A, Y73A, Y79A, Y80A, Y87A, Y95A, Y102A)</i>	GenScript	N/A
Plasmid His-Lge1 1-80 Y>A: <i>pPROEX HTb – 6xHis- TEV site – LGE1 1-80 (Y4A, Y9A, Y12A, Y23A, Y38A, Y39A, Y45A, Y49A, Y53A, Y68A, Y69A, Y73A, Y79A, Y80A)- StrepII</i>	This paper	N/A
Plasmid His-Lge1 FL Y>A <sub>(1-80)</sub> : <i>pPROEX HTb – 6xHis- TEV site – LGE1 1-332 (Y4A, Y9A, Y12A, Y23A, Y38A, Y39A, Y45A, Y49A, Y53A, Y68A, Y69A, Y73A, Y79A, Y80A)- StrepII</i>	This paper	N/A
Plasmid His-Lge1 FL Y>A <sub>(1-102)</sub> : <i>pPROEX HTb – 6xHis- TEV site – LGE1 1-332 (Y4A, Y9A, Y12A, Y23A, Y38A, Y39A, Y45A, Y49A, Y53A, Y68A, Y69A, Y73A, Y79A, Y80A, Y87A, Y95A, Y102A)- StrepII</i>	This paper	N/A
Plasmid Lge1 R>K (original): <i>pMA-RQ - LGE1 1-332 (R11K, R18K, R20K, R27K, R28K, R30K, R39K, R48K, R63K, R70K, R77K)</i>	Invitrogen	N/A
Plasmid His-Lge1 1-80 R>K: <i>pPROEX HTb – 6xHis- TEV site – LGE1 1-80 (R11K, R18K, R20K, R27K, R28K, R30K, R39K, R48K, R63K, R70K, R77K) - StrepII</i>	This paper	N/A
Plasmid His-Lge1 FL R>K: <i>pPROEX HTb – 6xHis- TEV site – LGE1 1-332 (R11K, R18K, R20K, R27K, R28K, R30K, R39K, R48K, R63K, R70K, R77K) - StrepII</i>	This paper	N/A
Plasmid His-Rad6: <i>pST50 Trc1 – 6xHis – TEV site – RAD6</i>	(Turco, E. et al., 2015)	N/A
Plasmid Histone Octamer: <i>pST44 - HHF2/HTA1/6xHis-TEV site-FLAG-HTB2/HHT1</i>	(Turco, E. et al., 2015)	N/A
Plamid 16x 601 Widom: <i>pUC19-16x 601WIDOM</i>	T. Richmond lab	N/A
Plasmid His-WAC IDR-Lge1CC: <i>pPROEX HTb - 6xHis- TEV site - WAC(1-318)-LGE1 (243-332)- StrepII</i>	This paper	N/A
Plasmid LAF1: <i>pET28a – LAF1 – 6xHis</i>	(Elbaum-Garfinke, et al., 2015)	N/A
Plasmid His-LAF1 IDR-Lge1CC: <i>pPROEX HTb - 6xHis- TEV site - LAF1(1-169)-LGE1(243-332)- StrepII</i>	This paper	N/A



Supplementary Figure 1 - Uncropped scans with size markers related to Main Figures



Supplementary Figure 2 - Uncropped scans with size markers related to Extended Data Figures