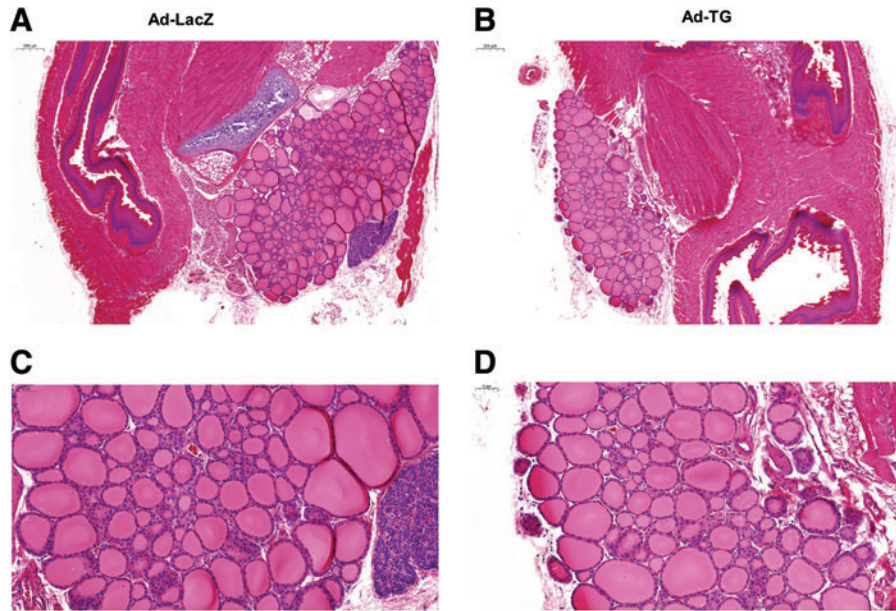


SUPPLEMENTARY FIG. S3. Thyroid status in mice immunized with adenovirus containing hTG. **(A)** Concentration of serum total T₄ in mice immunized with control Ad-LacZ, Ad-TG and induced with classical EAT. **(B)** Serum TSH levels in mice immunized with control Ad-LacZ, Ad-TG and induced with classical EAT. The data are shown as means ± SE. Statistical analysis was performed by using one-way ANOVA followed by Student–Newman–Keuls multiple-comparison test. * $p < 0.05$, ** $p < 0.01$ (Ad-LacZ=4–12; Ad-TG=5–20; classical EAT=7–8). T₄, thyroxine; TSH, thyrotropin.



SUPPLEMENTARY FIG. S4. Thyroid sections from a mouse immunized with Ad-LacZ **(A, C)** and a mouse immunized with Ad-TG **(B, D)**. Mice did not develop infiltration of the thyroid by lymphocytes and destruction of thyroid follicles. Hematoxylin and eosin staining, magnification 5×**(A, B)** and 20×**(C, D)**. Scale bars, 200 and 50 µm.

SUPPLEMENTARY TABLE S1. PEPTIDE SEQUENCES

Peptide	Sequence
TG2098	LSSVVVDPSIRHFDV
TG1571	EKVPESKVIKDANAPVAVRSKVPDSEF
TG726	CPTPCQLQAEQAFRLTV
TG202	VNTTDMMIFDLVHSYNRFPD
TG1951	FRKKVILEDKVKNF
Scrambled APO (NC)	PKDRLKIYNNFTKIGDLSL

APO, apopeptide; NC, negative control; TG, thyroglobulin.