

Supporting Information

An integrated smartphone-based genetic analyzer for qualitative and quantitative pathogen detection

Hau Van Nguyen¹, Van Dan Nguyen¹, Fei Liu^{2,3*}, Tae Seok Seo^{1*}

1. *Department of Chemical Engineering, Kyung Hee University, Yongin, 17104, South Korea*

2. *School of Ophthalmology & Optometry, School of Biomedical Engineering, Wenzhou Medical University, Wenzhou, Zhejiang 325035, China*

3. *Wenzhou Institute, University of Chinese Academy of Sciences, Wenzhou, Zhejiang 325001, China*

*Corresponding author

E-mail address: feiliu@wmu.edu.cn; seots@khu.ac.kr; Phone: +82-31-201-3676; Fax: +82-31-204-8114

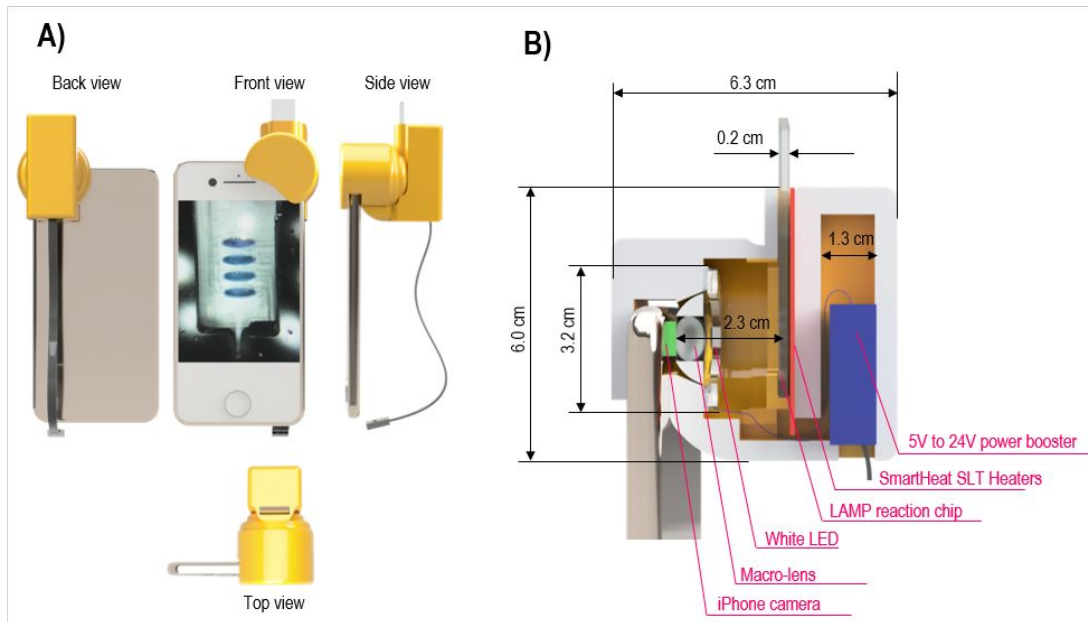


Figure. S1. (A) The integrated smartphone-based genetic analyzer with different view, and (B) the cross-sectional schematics to show the structure inside the i-Gene.

Table S1. Primer sequence information for the LAMP reaction.

Target gene / Accession #	Primer	Sequence (5' to 3')	Length [bp]
<i>E. coli</i> O157:H7 fliC gene (CP002967.1 : 2147323-2149017)	FIP	CTACCAACCTGTCTGAAGCGCATC	42
		GACATGTTGGACACTTCG	
<i>S. Typhimurium</i> invA gene (M90846.1)	BIP	GGTGACTGCGGAATCCAGACGTGA	41
		GGCAATTGCATCCATCG	
	F3	GCCTGCTGGATGATCTGC	18
	B3	CGGCTCTGCAACCAAAGA	18
<i>V.</i> <i>parahaemolyticus</i> toxR gene (L11929.1)	FIP	TCCGCGACACGTTCTGAACCCTCT	40
		ATTGTCACCGTGGTCC	
	BIP	TGCCGATTTGAAGGCCGGTACAGT	38
		ACGCTTCGCCGTTT	
F3	GCGGTGGGTTTTGTTGTCT	19	
B3	CGTAAAGCTGGCTTTCCCTT	20	
<i>V.</i> <i>parahaemolyticus</i> toxR gene (L11929.1)	FIP	TCGACTCCACATTCCTCGATTACT	41
		GATAACTTGCCAGACG	
	BIP	CCTGCCGAATGGCGATTACAATTA	40
		ATTGTCGATTCAGCCG	
F3	CAACCATGGTGACTGTGA	18	
B3	CCAGCGACCTTTCTCTGA	18	

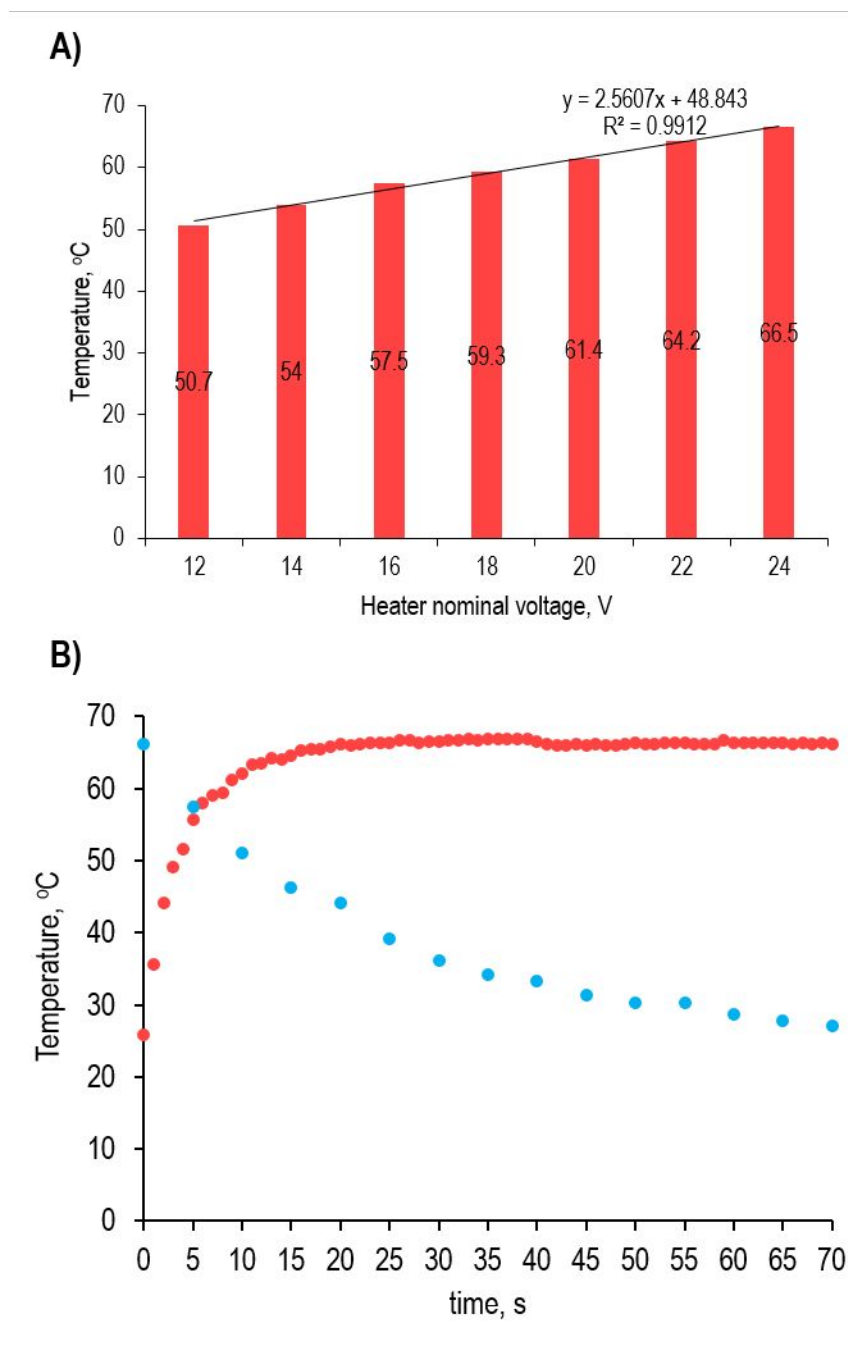


Figure. S2. (A) Temperature profile according to the nominal voltage, and (B) the heating and cooling profiles of the heater.

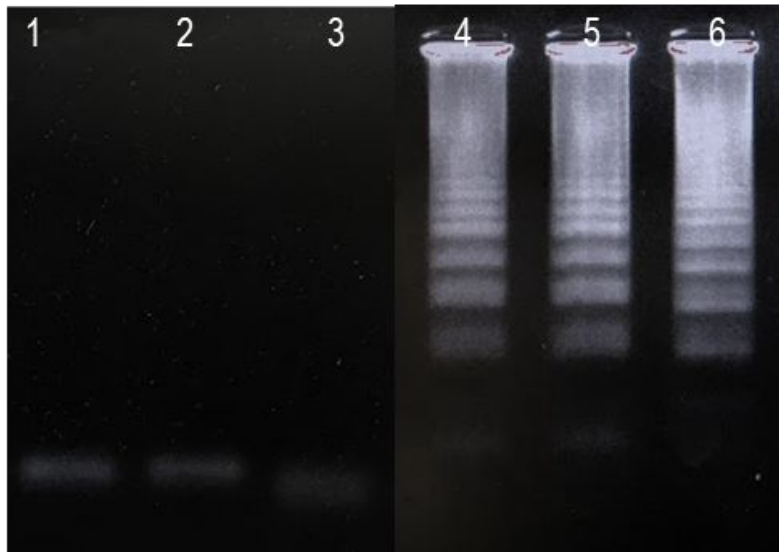


Figure. S3. Gel electrophoresis results of the (1) and (4): a negative and positive control of *E. coli* O157:H7; (2) and (5): a negative and positive control of *S. Typhimurium*; (3) and (6): a negative and positive control of *V. parahaemolyticus*.

Table S2. The cost of each component and the overall cost of the i-Gene.

No	Component	Company	Amount	Cost/AE, USD	Total, USD
1	1.5 cm close-up smartphone camera macro lens	Shanghai SKINA Digital Technology, China	1	14.1	14.1
2	6000K white LED	Tongyifang, China	8	0.4	3.0
3	SmartHeat SLT Thin-Film Heaters	Minco, USA	1	91.0	91.0
4	MicroUSB Boost Type DC-DC Variable Converter	Tuozhanteng Hong Kong Technology, China	1	2.5	2.5
5	ABS resin for 3D printing platform	Cubicon, Korea	60 g	65.0 USD/500g	7.8
Total					118.3