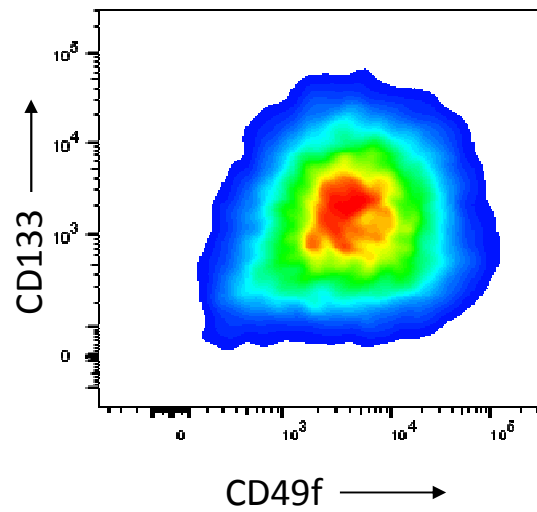
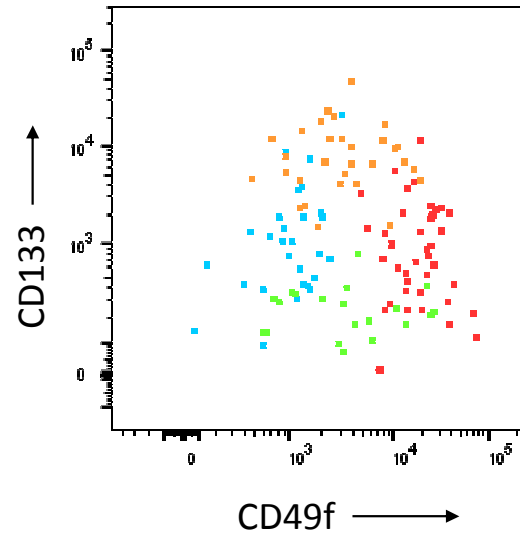


Pre-Sort Total Tumor Suspension



Overlay of Post-Sort Samples for Expression Analysis



	Sample Name	Subset Name	Count
■	T290_CD133 Low post_016.fcs	Tumor Cells	20.0
■	T290_CD133 High post_017.fcs	Tumor Cells	30.0
■	T290_CD49f Low post_014.fcs	Tumor Cells	29.0
■	T290_CD49f High post_015.fcs	Tumor Cells	41.0