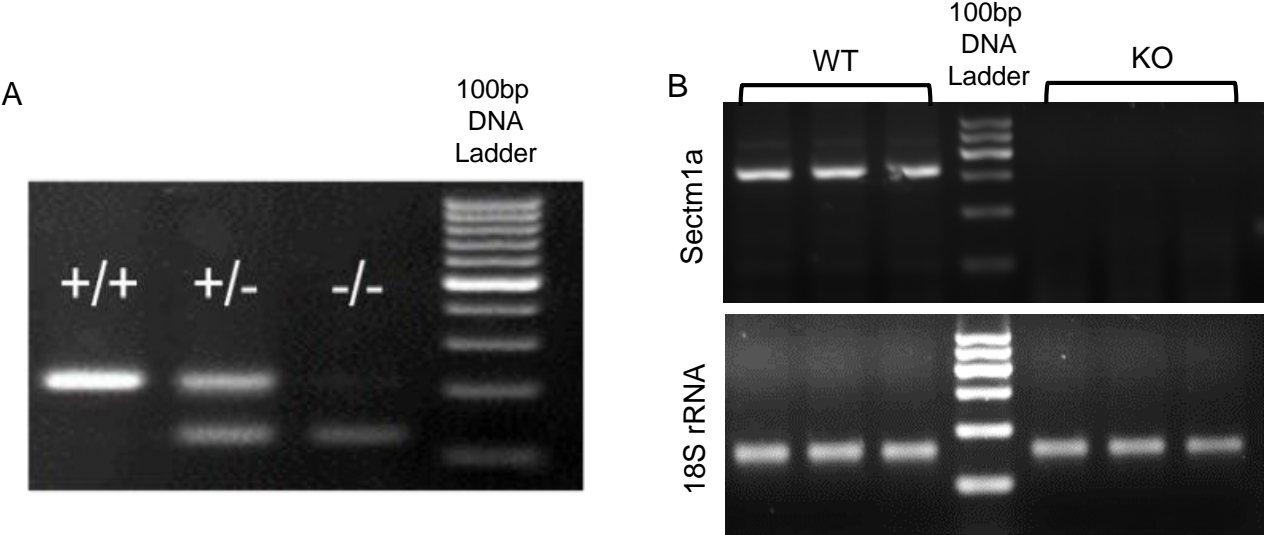


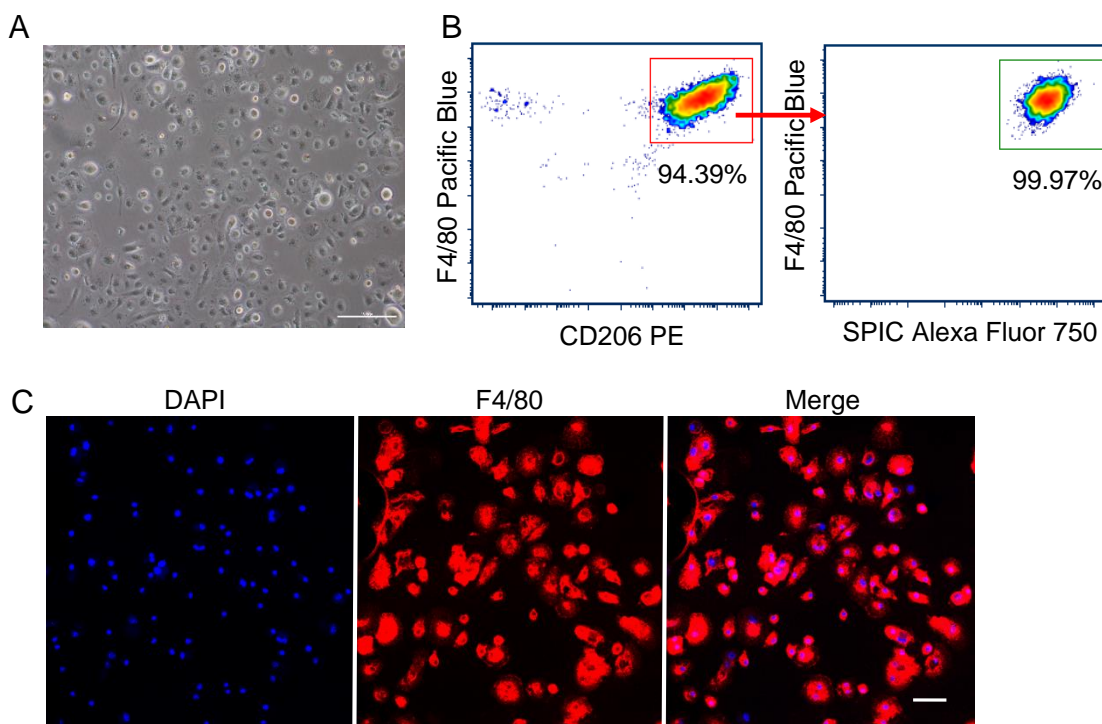
Supplemental Figure 1



Supplemental Figure 1. Validation of the Sectm1a-knockout mouse model.

(A) Representative agarose gel image assessing genotypes in mice. (B) Products of qRT-PCR were run on agarose gel, and validated that Sectm1a-KO model was successfully generated.

Supplemental Figure 2



Supplemental Figure 2. Validation of RPMs isolated from the mouse spleen. (A) The bright field image showed the morphology of RPMs on day 7 after isolation. Scale bar: 100 μm . (B) Using flow cytometry analysis, isolated RPMs were confirmed by the expression of F4/80, CD206 and SPIC. (C) RPMs were stained with F4/80 antibody (Red). The nucleus was stained with DAPI (Blue). Scale bar: 20 μm .