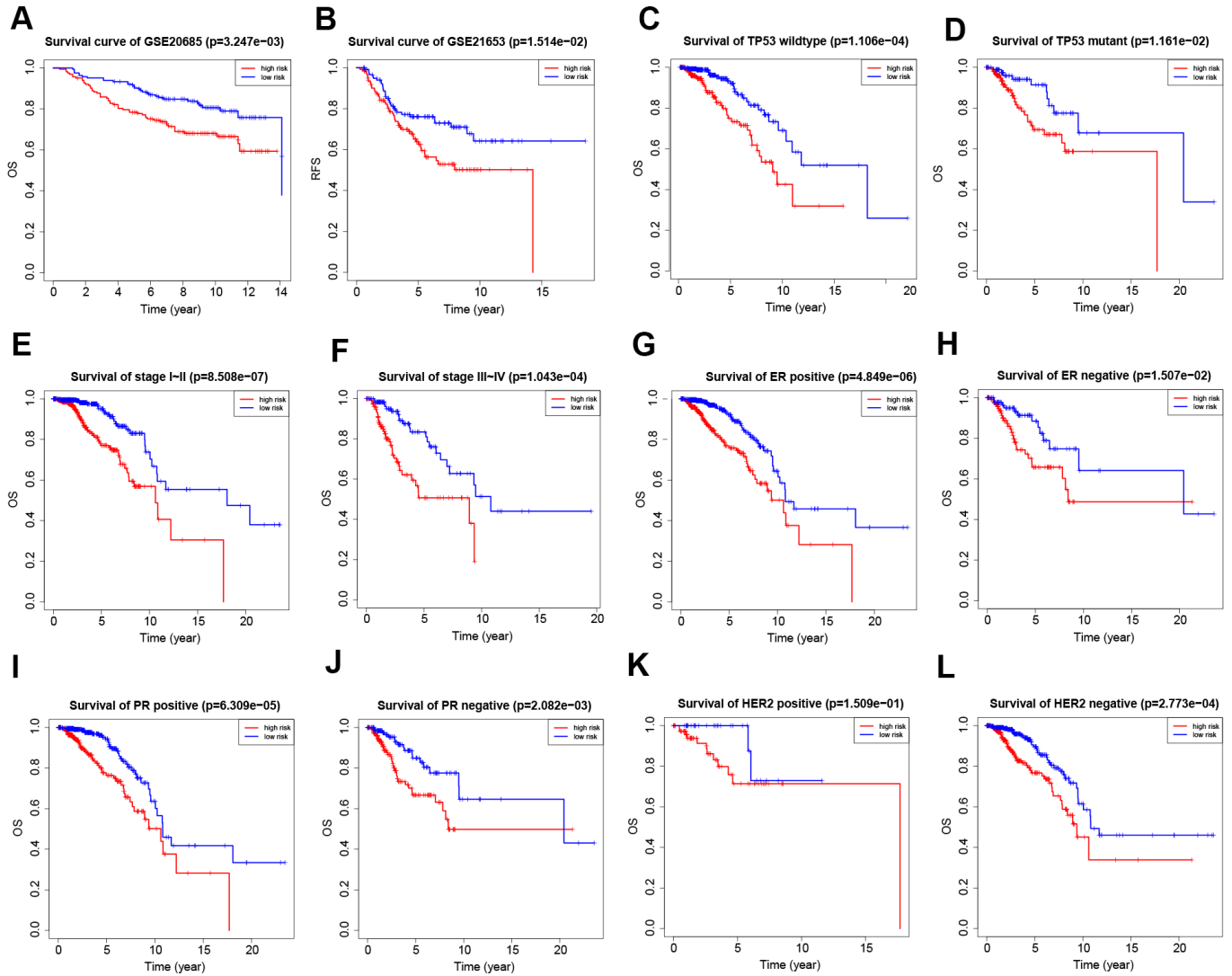
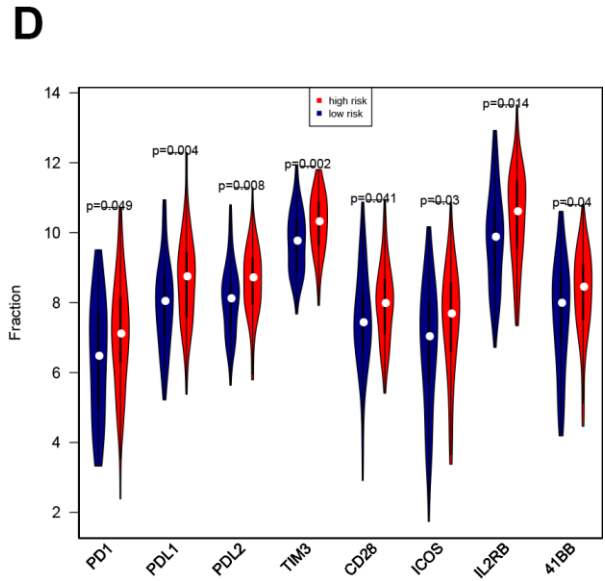
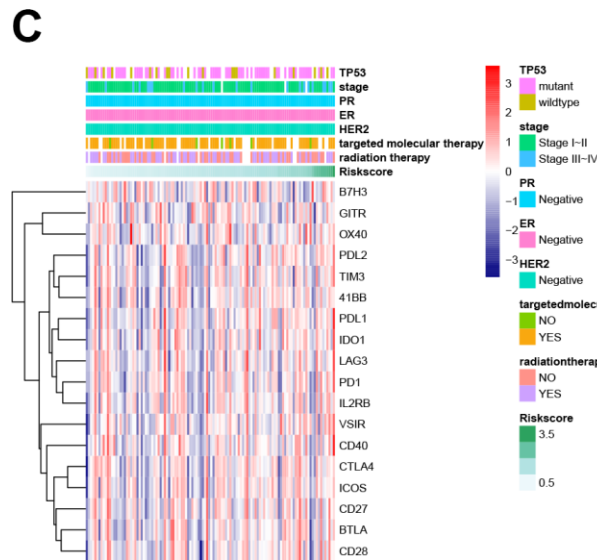
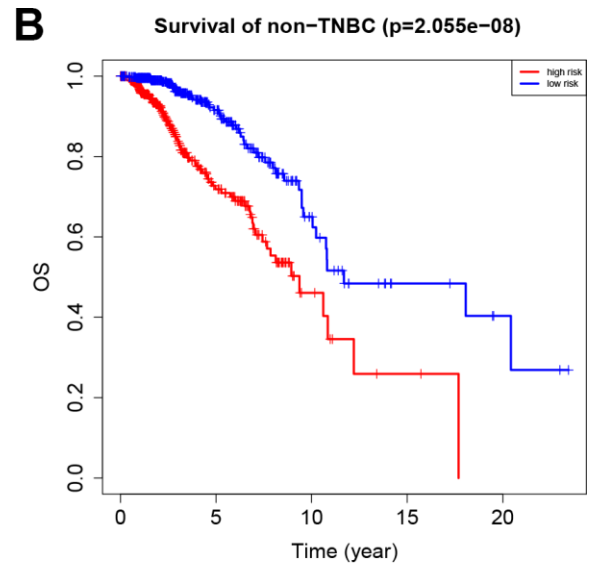
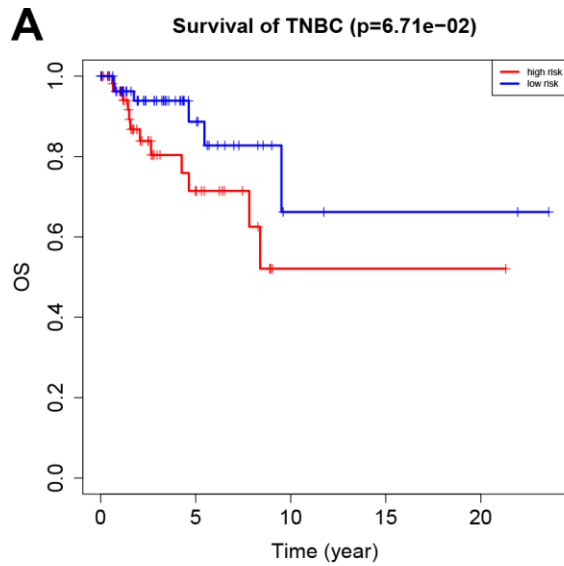


SUPPLEMENTARY FIGURES



Supplementary Figure 1. Validation of the eight-gene signature using survival analysis of GEO datasets and in different subtypes and stages of breast cancer. (A, B) Survival analysis of the GSE20685 and GSE21653 GEO datasets. (C, D) Survival analysis of breast cancer patients depending on TP53 mutation status. (E, F) Survival analysis of stage I-II vs. stage III-IV breast cancer patients. (G–L) Survival analysis in breast cancer patients with the following subtypes: ER positive/negative, PR positive/negative, HER2 positive/negative.



Supplementary Figure 2. Predictive value of the eight-gene signature for survival outcomes and immune checkpoints in TNBC subgroup. (A) Survival analysis of high- and low-risk TNBC patients. (B) Survival analysis of high- and low-risk non-TNBC patients. (C) Heatmap showing associations between risk score, clinical variables, and 18 immune checkpoints. (D) Predictive value of the eight-gene signature for PD1, PDL1, PDL2, TIM3, CD28, ICOS, IL2RB, and 41BB.