

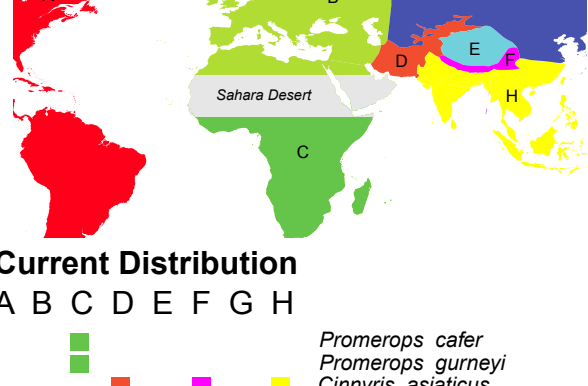
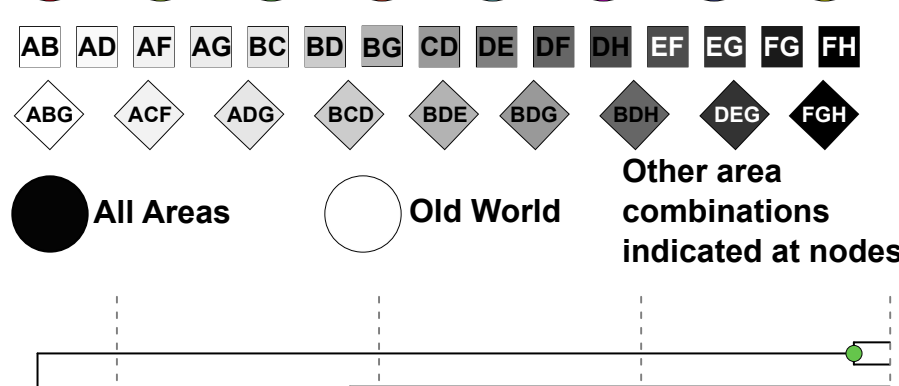
Into and Out of the Qinghai Tibet Plateau and the Himalayas: centers of origin and diversification compared across five clades of Eurasian montane and alpine passerine birds

Martin Päckert, Adrien Favre, Jan Schnitzler, Jochen Martens, Yue-Hua Sun
Dieter Thomas Tietze, Frank Hailer, Ingo Michalak, Patrick Strutzenberger

Figure S3

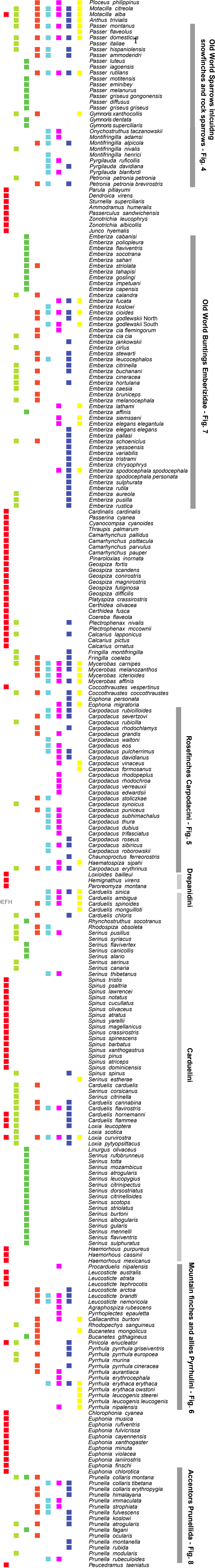
Ancestral range reconstruction fitting the DEC model to a time-calibrated tree of Passeroidea (275 ingroup species). The time-calibrated phylogenetic tree was generated in BEAST, using eight calibration points (fossils). The biogeographic analysis included a total of eight areas (A-H, see map); best states shown for ancestral ranges; outgroup *Bombycilla*: Holarctic distribution of the genus areas A= *B. cedrorum*; BG= *B. garrulus* + *B. japonica*)

Area Combinations



Current Distribution

A B C D E F G H



Old World Sparrows including snowfinches and rock sparrows - Fig. 4

Old World Buntings Emberizidae - Fig. 7

Rosefinches Carpodacini - Fig. 5

Depandini

Carduelini

Mountain finches and allies Pyrrhulini - Fig. 6

Accentors Prunellida - Fig. 8

Million years ago