

Additional file 1

Figure S1.jpg

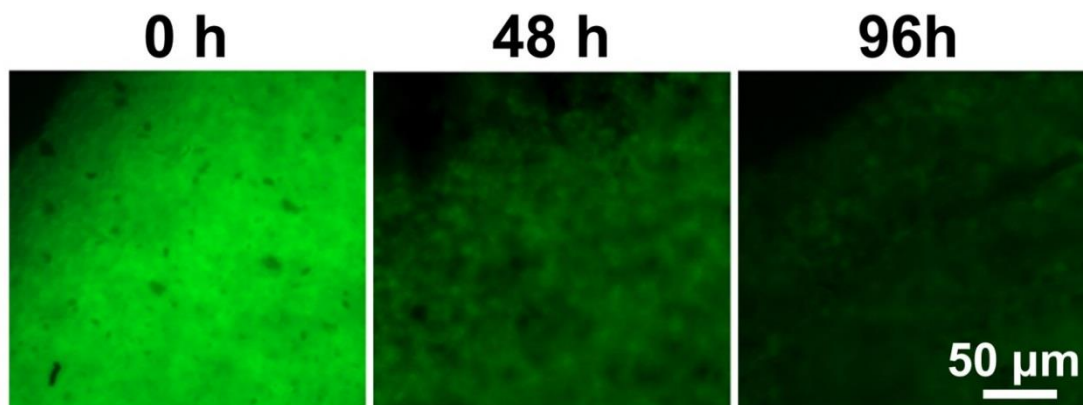


Figure S1. Fluorescence imaging of the curcumin/gelatin-blended nanofiber mats after being immersed in PBS over time.

Figure S2.jpg

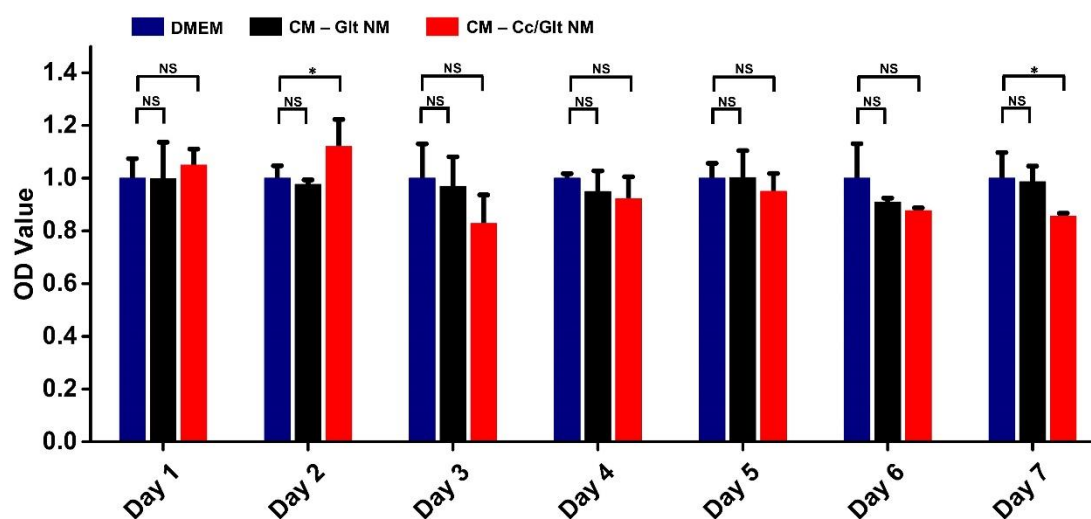


Figure S2. MTT cell viability assay for human mesenchymal stromal cells treated with CM - Cc/Glt NM or CM - Glt NM (error bar: standard deviation).