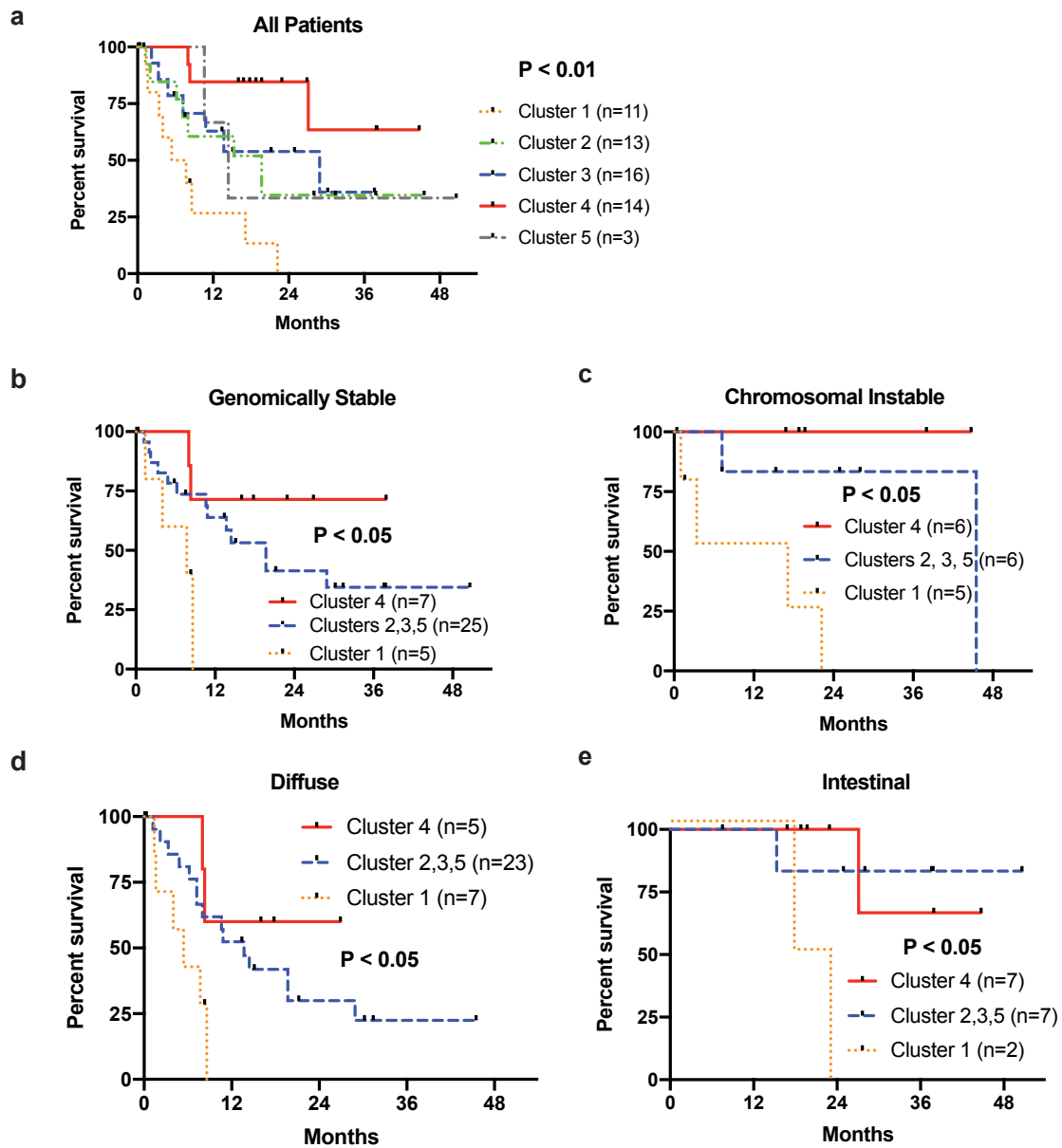


Supplementary Figure 3



Supplementary Figure 3. Subgroup analysis of overall survival for the Hispanic/Latino cohort.

Kaplan-Meier curves comparing:

- a. all patients by individual mRNA clusters, $P < 0.01$,
- b. patients with genomically stable tumors, $P < 0.05$,
- c. patients with chromosomal instable tumors, $P < 0.05$,
- d. patients with diffuse-type tumors, $P < 0.05$,
- e. patients with intestinal-type tumors, $P < 0.05$.