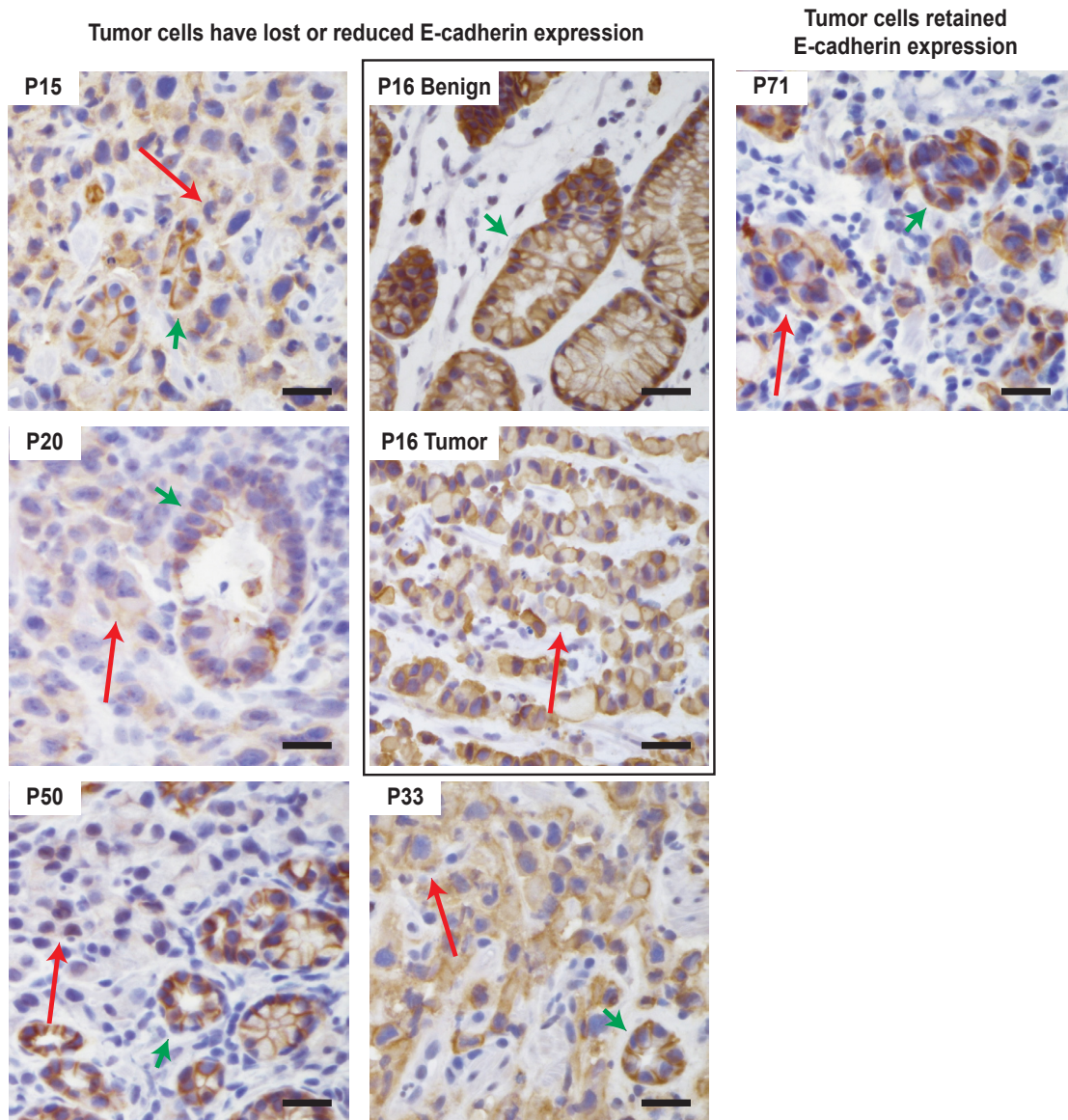


Supplementary Figure 5



Supplementary Figure 5.

Immunohistochemistry for E-cadherin in six patients who have germline *CDH1* mutations. Red long arrows denote cancer cells, short green arrows denote normal stomach glands. P: patient. For P16, normal stomach and cancer cells are shown in two separate panels. Scale bar = 50 μm .