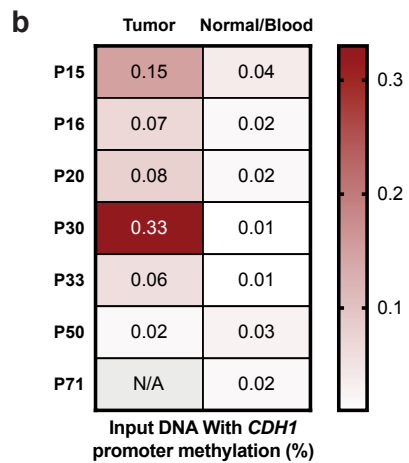
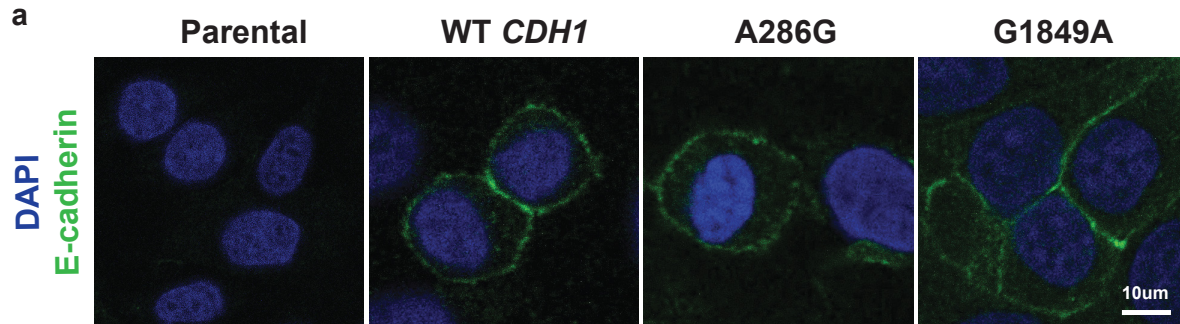


## Supplementary Figure 6



### Supplementary Figure 6.

a. Immunofluorescence staining for E-cadherin in Chinese hamster ovary cells overexpressing wild-type (WT) *CDH1*, A286G, or G1849A variants, all of which have wild-type membranous localization. Scale bar = 10  $\mu$ m.

b. Amount of DNA in which the *CDH1* promoter is methylated.