

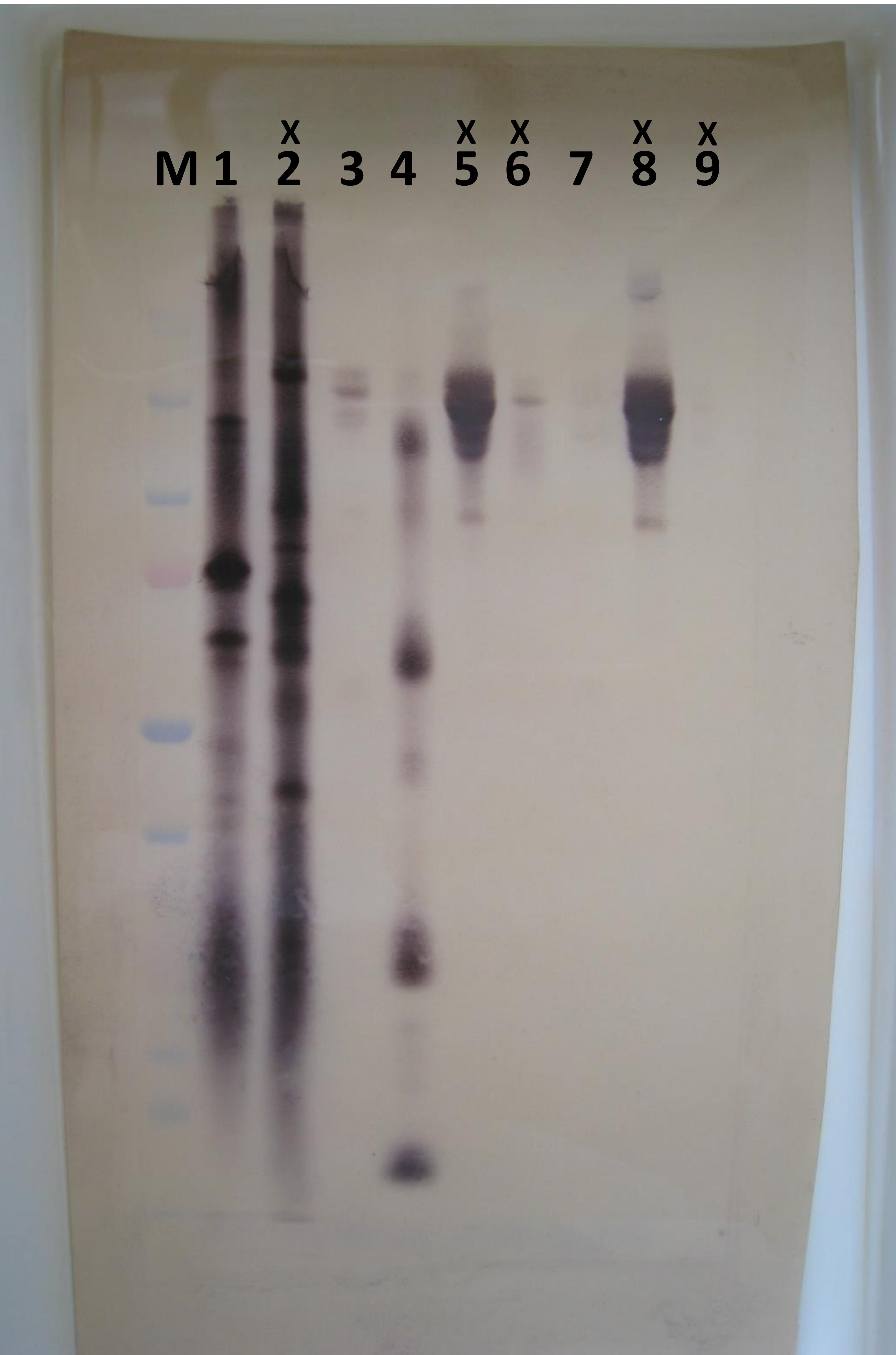
# Raw images corresponding to Figure 2.

M: molecular weight marker  
 1: *Leishmania donovani* DD8 lysate  
 2: *L. donovani* LV9 lysate  
 3: Concentrated Sudanese VL urine  
 4: 'Urine antigen' as described in the manuscript text

5: sample not used in the present analysis  
 6: sample not used in the present analysis  
 7: Concentrated Sudanese EHC urine  
 8: sample not used in the present analysis  
 9: Commercially available human urine proteins not used in the present analysis

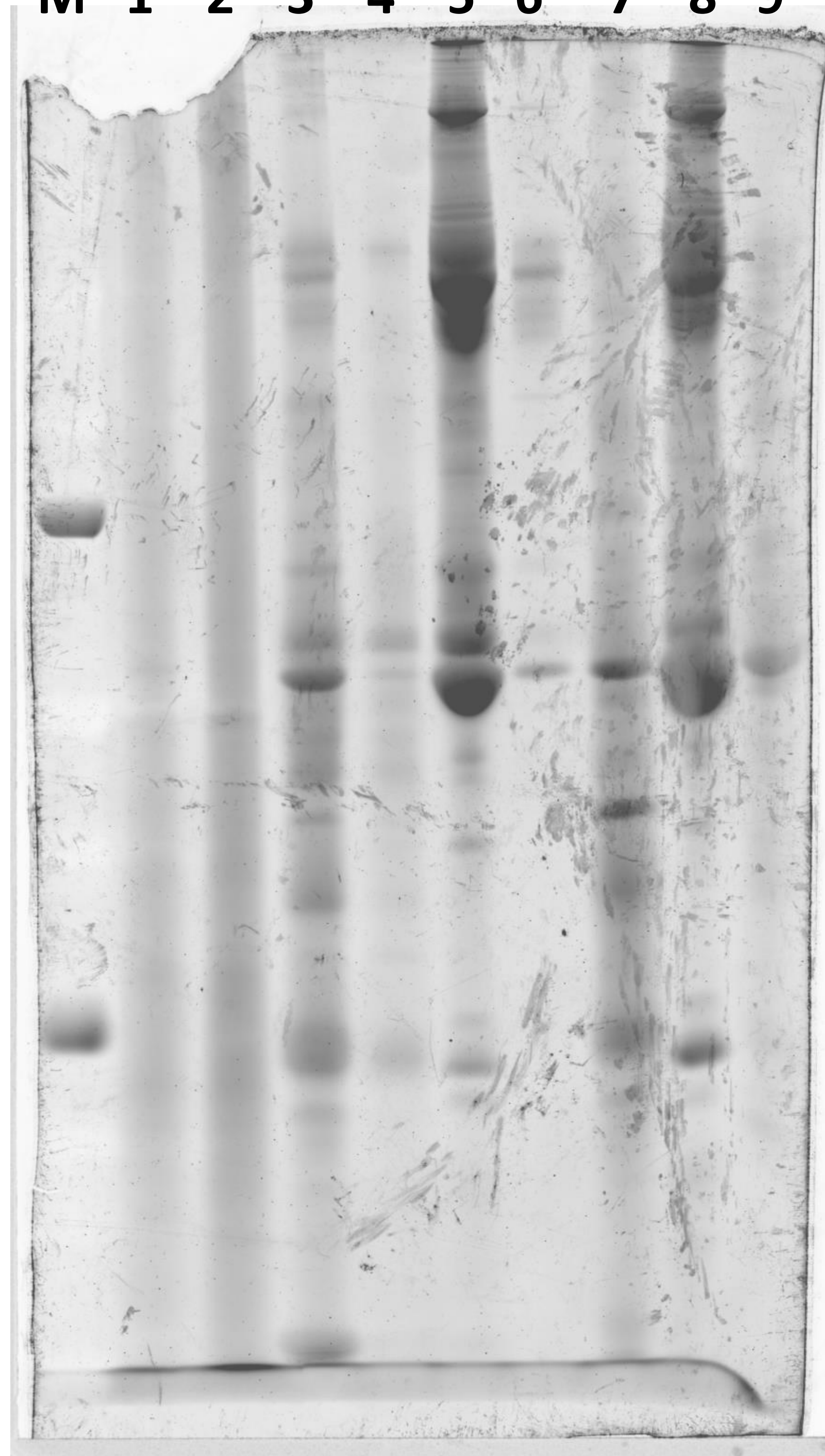
X indicates samples not used in the present analysis of VL urine.

M 1 2 3 4 5 6 7 8 9



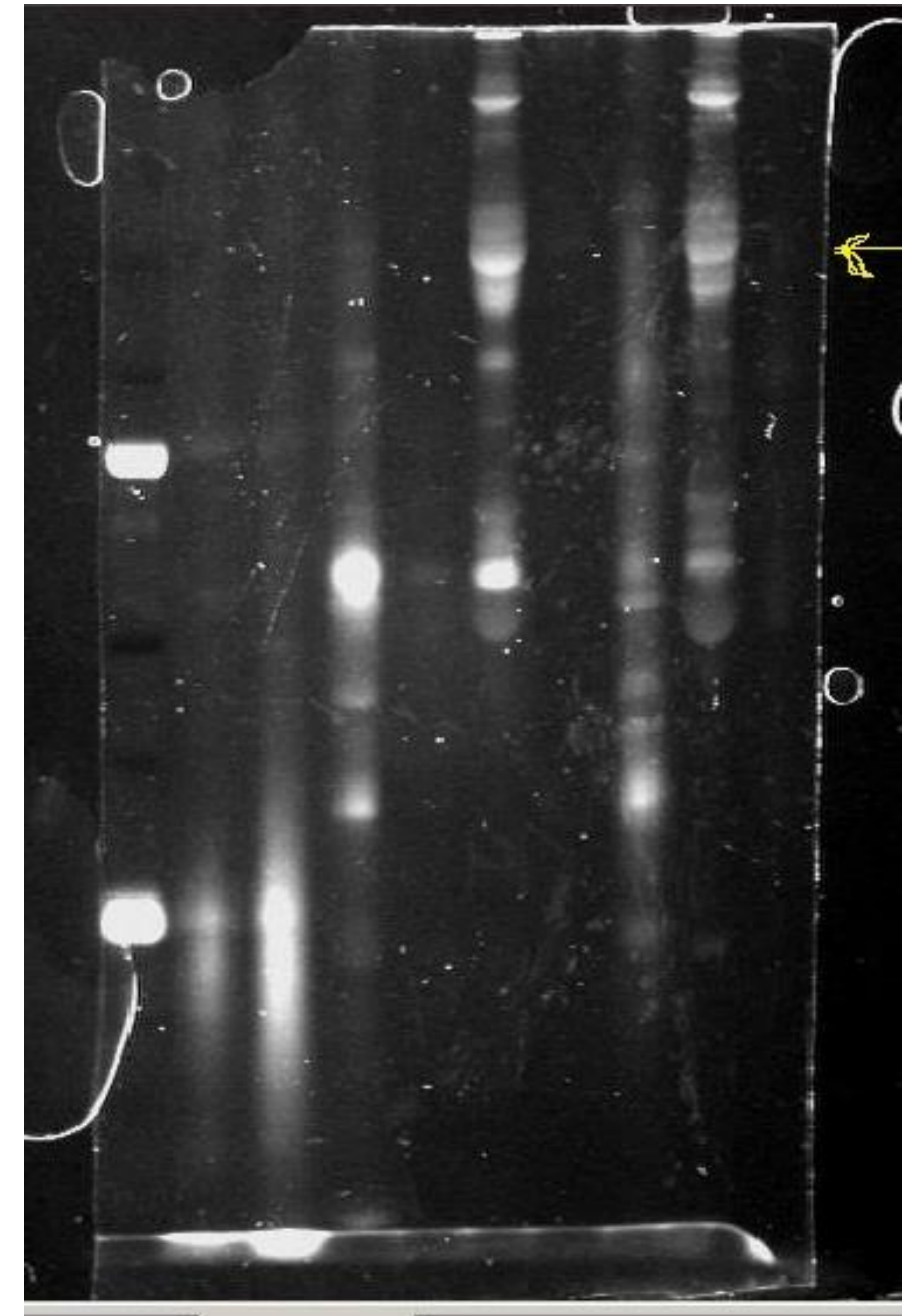
Blot photographed with Canon Ixus 860 IS digital camera.

M 1 2 3 4 5 6 7 8 9



Sypro (protein) stained gel imaged with a Typhoon Trio imager.

M 1 2 3 4 5 6 7 8 9



Pro Q Emerald (carbohydrate) stained gel-screenshot of image taken with GeneSnap software in a GelDoc imager.