

Supplementary Online Content

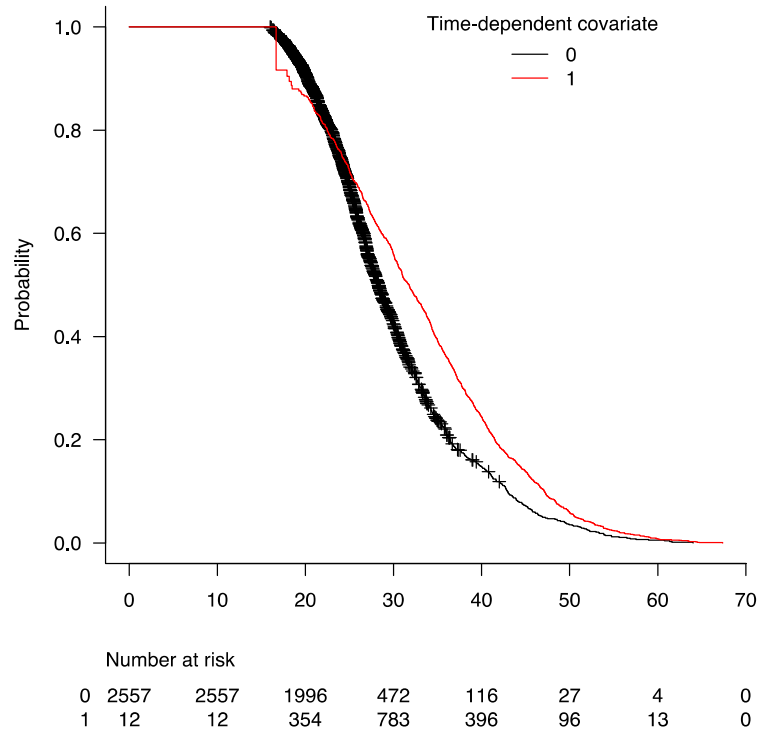
Nguyen A-L, Vodehnalova K, Kalincik T, et al. Association of pregnancy with the onset of clinically isolated syndrome. *JAMA Neurol*. Published online September 14, 2020. doi: 10.1001/jamaneurol.2020.3324

eFigure. Kaplan-Meier Curves (Using the Simon and Makuch Method) for Time to CIS by Gravida and Parity

eTable. Cox Regression Analysis of the Hazard of CIS Onset: Sensitivity Analysis Left-Censoring at 18 Years Compared to 16 Years

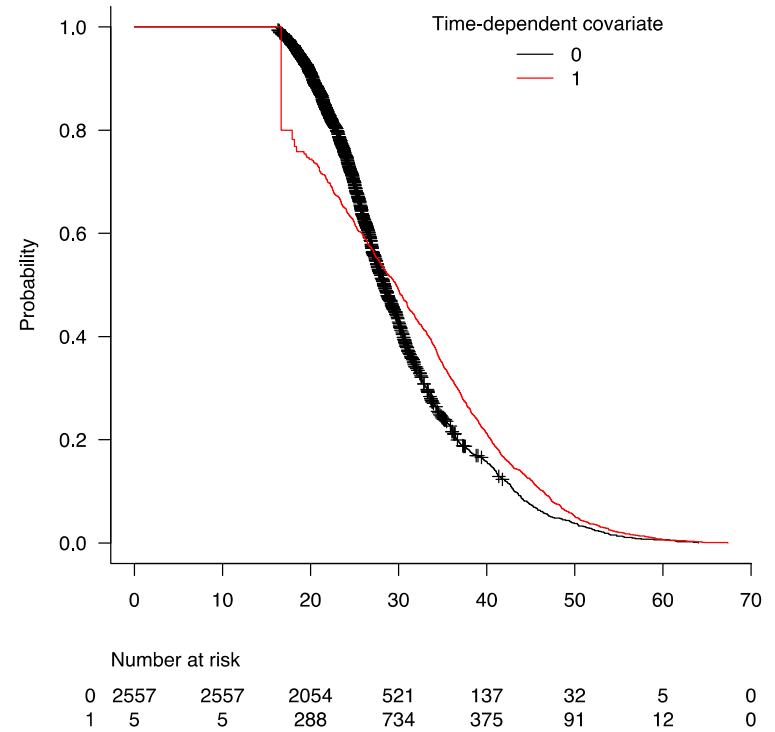
This supplementary material has been provided by the authors to give readers additional information about their work.

eFigure. Kaplan-Meier Curves (Using the Simon and Makuch Method) for Time to CIS by Gravida and Parity



A. GRAVIDA

Legend: 1=Gravida; 0=Nulligravida



B. PARITY

Legend: 1=Parous; 0=Nulliparous

eTable. Cox Regression Analysis of the Hazard of CIS Onset: Sensitivity Analysis Left-Censoring at 18 Years Compared to 16 Years

Primary analysis <i>Left censor 16y</i>			Sensitivity analysis <i>Left censor 18y</i>	
	HR (95% CI)	p-value	HR (95% CI)	p-value
GRAVIDA (pregnancies)				
Gravida				
No	Ref		Ref	
Yes	0.68 (0.62-0.75)	<0.001	0.68 (0.62-0.75)	<0.001
No. of pregnancies				
0	Ref		Ref	
1	0.70 (0.61-0.79)	<0.001	0.70 (0.61-0.79)	<0.001
2	0.67 (0.60-0.76)	<0.001	0.68 (0.61-0.77)	<0.001
3+	0.66 (0.58-0.75)	<0.001	0.66 (0.58-0.76)	<0.001
PARITY (childbirths)				
Parous				
No	Ref		Ref	
Yes	0.68 (0.61-0.75)	<0.001	0.69 (0.62-0.76)	<0.001
No. of childbirths				
0	Ref		Ref	
1	0.70 (0.62-0.79)	<0.001	0.71 (0.63-0.80)	<0.001
2	0.66 (0.58-0.74)	<0.001	0.68 (0.60-0.76)	<0.001
3+	0.69 (0.58-0.81)	<0.001	0.68 (0.57-0.81)	<0.001

Abbreviations: CI, confidence interval; HR, hazard ratio; no., number; ref, reference hazard ratio (1.0); y, years.

These analyses were all adjusted for site.

Left censor: women who had CIS onset ≤ 16 years or were pregnant < 16 years were excluded in the primary analysis. The sensitivity analysis left censored at 18 years.