

Supplementary Appendix 1

Table S1. Univariate and multivariable logistic for clinical outcomes by stratifying infection subtype.

Table S2 Propensity Score Analyses

Table S3 Outcomes of Propensity Score Analyses

Figure S1. Time from hospital admission to the diagnosis of infection among all patients.

Figure S2. Kaplan-Meier estimated event rates of all cause death or major bleeding

Figure S3. Subgroup analysis of in-hospital all cause death

Figure S4. Subgroup analysis of in-hospital major bleeding

Figure S5. Subgroup analysis of in-hospital major adverse clinical events

Figure S6. Distributions of propensity scores between the two groups before and after matching (the first row is the density plots and the second row is the QQ plots)

Table S1 Univariate and multivariable logistic for clinical outcomes by stratifying infection subtype.

Outcomes (Compare with uninfected patients)	Univariate analysis			Multivariable analysis		
	OR	95%CI	P value	OR	95%CI	Pvalue
Model 1						
In hospital						
Death						
Community acquired pulmonary infections	17.24	4.66~63.73	<.001	8.56	2.06~35.57	0.003
Hospital acquired pulmonary infections	23.25	4.95~109.28	<.001	11.51	2.15~61.49	0.004
Urinary tract infection	31.24	3.78~258.58	0.001	21.59	2.32~200.48	0.007
Other infection	29.99	8.01~112.27	<.001	23.14	5.59~95.86	<.001
Major Bleeding						
Community acquired pulmonary infections	28.32	16.54~48.48	<.001	18.13	9.92~33.16	<.001
Hospital acquired pulmonary infections	14.80	6.37~34.43	<.001	9.04	3.63~22.49	<.001
Urinary tract infection	5.16	0.67~39.50	0.114	3.10	0.39~24.51	0.283
Other infection	4.95	1.50~16.31	0.009	3.25	0.95~11.13	0.061
Death or MI or Major Bleeding						
Community acquired pulmonary infections	21.85	13.05~36.59	<.001	14.23	8.07~25.10	<.001
Hospital acquired pulmonary infections	16.69	8.01~34.77	<.001	11.28	5.14~24.76	<.001
Urinary tract infection	3.76	0.49~28.65	0.202	2.44	0.31~19.04	0.396
Other infection	6.26	2.43~16.13	<.001	4.51	1.69~12.01	0.003
Follow up						
Death						
Community acquired pulmonary infections	5.52	3.78~8.06	<.001	2.06	1.39~3.06	<.001
Hospital acquired pulmonary infections	6.16	3.78~10.02	<.001	2.57	1.56~4.24	<.001
Urinary tract infection	3.66	1.37~9.82	0.010	2.38	0.88~6.39	0.086
Other infection	2.62	1.44~4.79	0.002	1.45	0.79~2.66	0.232
Major Bleeding						
Community acquired pulmonary infections	14.29	9.26~22.06	<.001	8.86	5.49~14.27	<.001
Hospital acquired pulmonary infections	7.08	3.30~15.20	<.001	4.16	1.87~9.27	<.001

Outcomes (Compare with uninfected patients)	Univariate analysis			Multivariable analysis		
	OR	95%CI	P value	OR	95%CI	Pvalue
Urinary tract infection	2.54	0.35~18.13	0.354	1.66	0.23~11.98	0.616
Other infection	2.49	0.79~7.83	0.119	1.83	0.57~5.85	0.307
Death or Major Bleeding						
Community acquired pulmonary infections	6.83	4.99~9.35	<.001	2.85	2.05~3.97	<.001
Hospital acquired pulmonary infections	6.32	4.08~9.79	<.001	2.93	1.87~4.61	<.001
Urinary tract infection	2.85	1.07~7.64	0.037	1.78	0.66~4.78	0.253
Other infection	2.62	1.51~4.55	0.001	1.60	0.92~2.80	0.099
Model 2						
In hospital						
Death						
Community acquired pulmonary infections	17.24	4.66~63.73	<.001	2.01	0.37~10.86	0.418
Hospital acquired pulmonary infections	23.25	4.95~109.28	<.001	6.48	0.92~45.66	0.061
Urinary tract infection	31.24	3.78~258.58	0.001	14.68	0.96~223.51	0.053
Other infection	29.99	8.01~112.27	<.001	5.02	0.98~25.62	0.052
Major Bleeding						
Community acquired pulmonary infections	28.32	16.54~48.48	<.001	11.91	6.10~23.28	<.001
Hospital acquired pulmonary infections	14.80	6.37~34.43	<.001	7.47	2.80~19.90	<.001
Urinary tract infection	5.16	0.67~39.50	0.114	1.92	0.15~25.23	0.619
Other infection	4.95	1.50~16.31	0.009	1.05	0.26~4.23	0.942
Death or MI or Major Bleeding						
Community acquired pulmonary infections	21.85	13.05~36.59	<.001	9.69	5.12~18.37	<.001
Hospital acquired pulmonary infections	16.69	8.01~34.77	<.001	10.00	4.33~23.12	<.001
Urinary tract infection	3.76	0.49~28.65	0.202	1.59	0.13~19.16	0.713
Other infection	6.26	2.43~16.13	<.001	1.71	0.54~5.35	0.360
Follow up						
Death						
Community acquired pulmonary infections	5.52	3.78~8.06	<.001	2.70	1.81~4.03	<.001
Hospital acquired pulmonary infections	6.16	3.78~10.02	<.001	3.56	2.15~5.90	<.001
Urinary tract infection	3.66	1.37~9.82	0.010	2.90	1.08~7.80	0.034

Outcomes (Compare with uninfected patients)	Univariate analysis			Multivariable analysis		
	OR	95%CI	P value	OR	95%CI	Pvalue
Other infection	2.62	1.44~4.79	0.002	1.32	0.71~2.44	0.376
Major Bleeding	14.29	9.26~22.06	<.001	6.30	3.79~10.49	<.001
Community acquired pulmonary infections	7.08	3.30~15.20	<.001	3.51	1.57~7.84	0.002
Hospital acquired pulmonary infections	2.54	0.35~18.13	0.354	1.42	0.19~10.39	0.731
Urinary tract infection	2.49	0.79~7.83	0.119	1.01	0.31~3.29	0.981
Other infection						
Death or Major Bleeding						
Community acquired pulmonary infections	6.83	4.99~9.35	<.001	3.55	2.55~4.94	<.001
Hospital acquired pulmonary infections	6.32	4.08~9.79	<.001	3.46	2.20~5.45	<.001
Urinary tract infection	2.85	1.07~7.64	0.037	1.96	0.73~5.28	0.181
Other infection	2.62	1.51~4.55	0.001	1.38	0.78~2.41	0.266

Model 1 included age, gender, current smokers, heart failure, anemia, type of disease, estimate glomerular filtration rate.

Model 2 included diabetes mellitus, hypertension, prior myocardial infarction, prior stroke, radial access, chronic kidney disease, intra-aortic balloon pump.

Table S2 Propensity Score Analyses

	Propensity Score Analyses			<i>P</i> value
	Uninfected	Infected	Total	
	(N=592)	(N=148)	(N=740)	
Demographics				
Age, y	70.39±9.09	70.24±9.15	70.36±9.09	0.861
Age ≥ 65 y	444(75.0%)	110(74.3%)	554(74.9%)	0.865
Female	166(28.0%)	37(25.0%)	203(27.4%)	0.458
Weight, kg	63.25±12.22	63.99±12.03	63.40±12.18	0.510
Heart rate, bpm	75.01±12.30	75.37±12.80	75.08±12.40	0.751
Blood pressure, mmHg				
Systolic	137.48±21.34	137.12±21.66	137.41±21.39	0.854
Diastolic	76.07±11.68	76.00±11.13	76.06±11.56	0.944
Medical history and risk factors, n(%)				
Current Smoker	157(26.5%)	41(27.7%)	198(26.8%)	0.771
Myocardial Infarction	126(21.3%)	29(19.6%)	155(20.9%)	0.651
Percutaneous coronary intervention	100(16.9%)	25(16.9%)	125(16.9%)	1
Coronary-artery bypass surgery	10(1.7%)	4(2.7%)	14(1.9%)	0.418
Stroke	36(6.1%)	9(6.1%)	45(6.1%)	1
Atrial Fibrillation	19(3.2%)	5(3.4%)	24(3.2%)	0.917
Hypertension	445(75.2%)	111(75.0%)	556(75.1%)	0.966
Diabetes mellitus	248(41.9%)	67(45.3%)	315(42.6%)	0.457
Type of disease, n(%)				
NSTEMI	225(38.0%)	60(40.5%)	285(38.5%)	0.571
Unstable angina	367(62.0%)	88(59.5%)	455(61.5%)	NA
Heart Failure, n(%)	123(20.8%)	32(21.6%)	155(20.9%)	0.821

Propensity Score Analyses				
	Uninfected	Infected	Total	P value
	(N=592)	(N=148)	(N=740)	
LVEF, %	59.67±12.02	57.81±13.16	59.29±12.28	0.118
eGFR, mL/min/1.73m ²	65.65±26.10	66.66±28.13	65.85±26.50	0.678
eGFR ≤ 60, n(%)	234(39.5%)	58(39.2%)	292(39.5%)	0.940
Serum creatinine, μmol/dL	1.39±1.16	1.43±1.32	1.40±1.19	0.726
Hematocrit, g/L	0.36±0.05	0.37±0.05	0.36±0.05	0.690
Anemia, n(%)	337(56.9%)	81(54.7%)	418(56.5%)	0.630
Cardiac biomarker positive, n(%)	344(61.5%)	84(59.2%)	428(61.1%)	0.603
In hospital medication, n(%)				
Dual antiplatelet therapy	558(94.3%)	138(93.2%)	696(94.1%)	0.641
Statin	576(97.3%)	145(98.0%)	721(97.4%)	0.642
ACE inhibitor or ARB	487(82.3%)	123(83.1%)	610(82.4%)	0.809
Calcium-channel blocker	200(33.8%)	46(31.1%)	246(33.2%)	0.532
β-blocker	488(82.4%)	120(81.1%)	608(82.2%)	0.701
Procedure characteristics, n(%)				
Radial access	486(82.1%)	116(78.4%)	602(81.4%)	0.299
Coronary anatomy				
Any left main	117(19.8%)	26(17.6%)	143(19.3%)	0.786
Multi-vessel disease	363(61.3%)	95(64.2%)	458(61.9%)	
Others	112(18.9%)	27(18.2%)	139(18.8%)	
Treated vessel				
Any left main	77(13.0%)	17(11.5%)	94(12.7%)	0.708
Multi-vessel	209(35.3%)	49(33.1%)	258(34.9%)	
Others	306(51.7%)	82(55.4%)	388(52.4%)	

Propensity Score Analyses				
	Uninfected	Infected	Total	P value
	(N=592)	(N=148)	(N=740)	
Stent type				
Drug eluting stent	592(100.0%)	148(100.0%)	740(100.0%)	1
Number of stents	2.26±1.29	2.27±1.38	2.26±1.31	0.933
Total length of stents	56.48±35.90	58.22±38.71	56.83±36.46	0.604
Thrombus aspiration	16(2.7%)	3(2.0%)	19(2.6%)	0.642
Time to procedure				
In 24 hours	253(42.7%)	59(39.9%)	312(42.2%)	0.816
24~72 hours	135(22.8%)	35(23.6%)	170(23.0%)	
> 72 hours	204(34.5%)	54(36.5%)	258(34.9%)	

*Abbreviations: NSTEMI=Non-ST elevation myocardial infarction; LVEF=left ventricular ejection fraction; eGFR=Estimate glomerular filtration rate; ACE=angiotensin-converting enzyme; ARB=angiotensin receptor blocker.

Table S3 Outcomes of Propensity Score Analyses

Outcomes	Logistics analysis		
	OR/HR	95%CI	P value
In-hospital Death	4.01	0.25~64.30	0.981
In-hospital Major bleeding	18	2.40~134.8	0.005
In-hospital MI	2.0	0.18~22.20	0.57
In-hospital Death or Major bleeding	17.24	4.66~63.73	<.001
Follow-up Death	2	0.97~4.12	0.06
Follow-up Major bleeding	5.33	1.55~18.30	0.007
Follow-up Death or Major bleeding	2.46	1.29~4.69	0.006

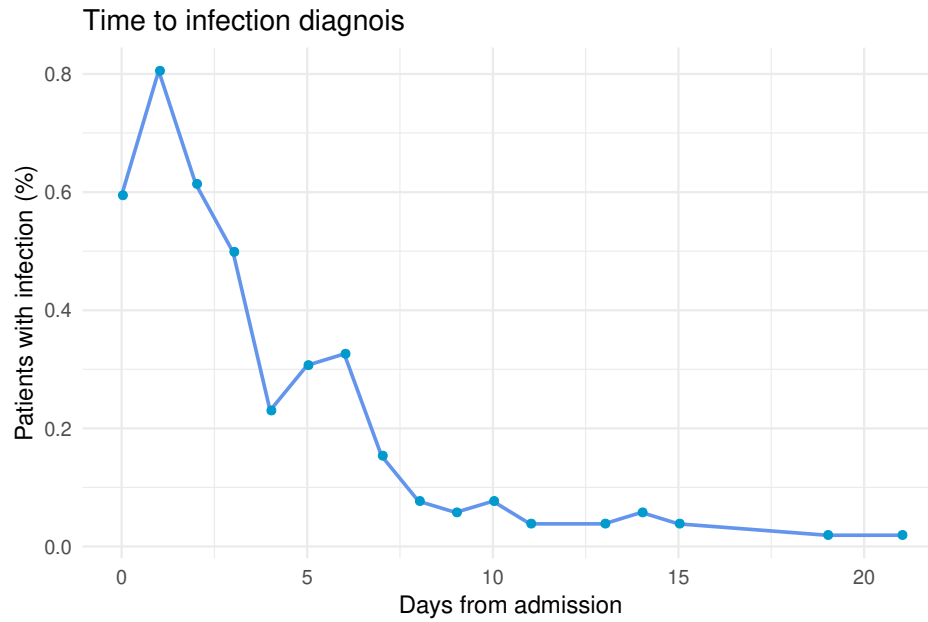
Figure S1. Time from hospital admission to the diagnosis of infection among all patients.

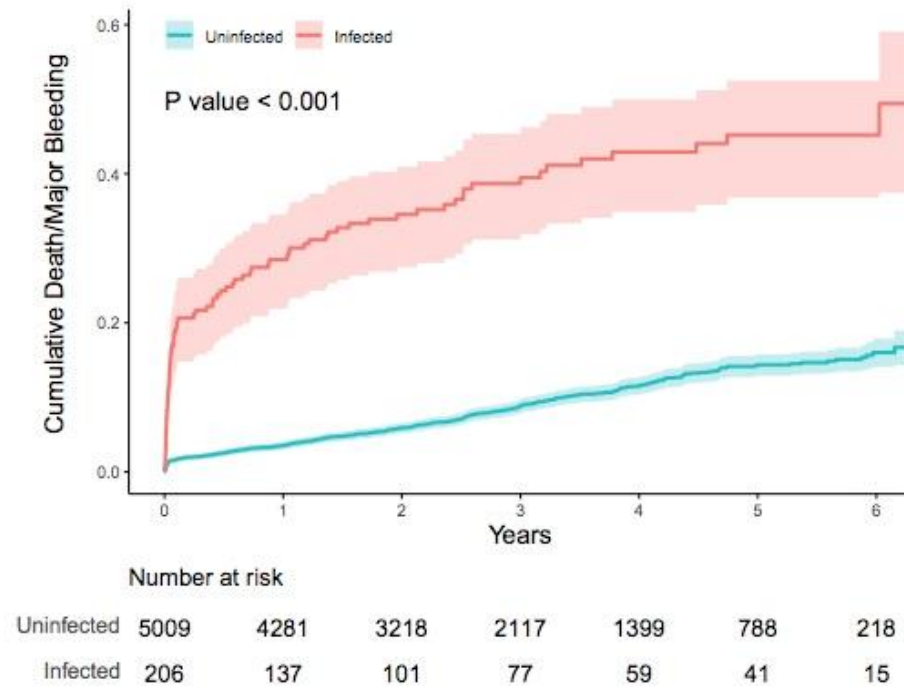
Figure S2. Kaplan-Meier estimated event rates of all cause death or major bleeding

Figure S3. Subgroup analysis of in-hospital all cause death

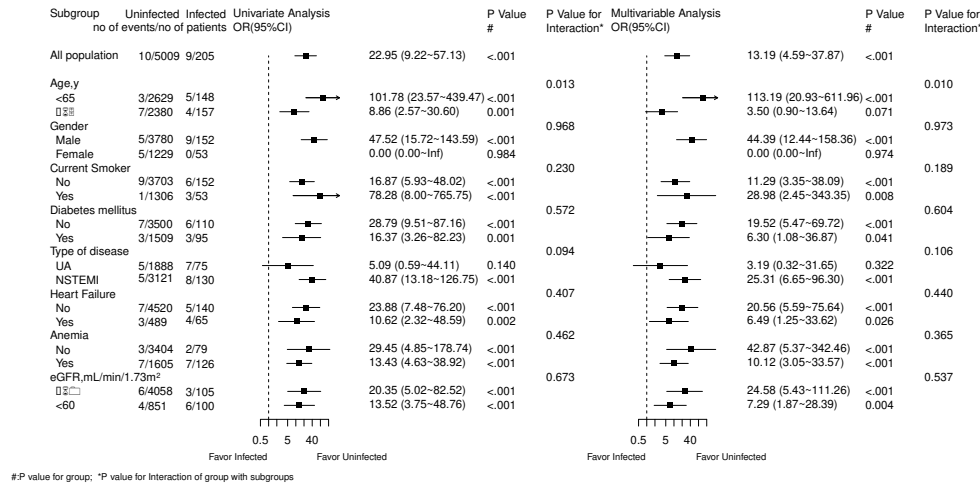


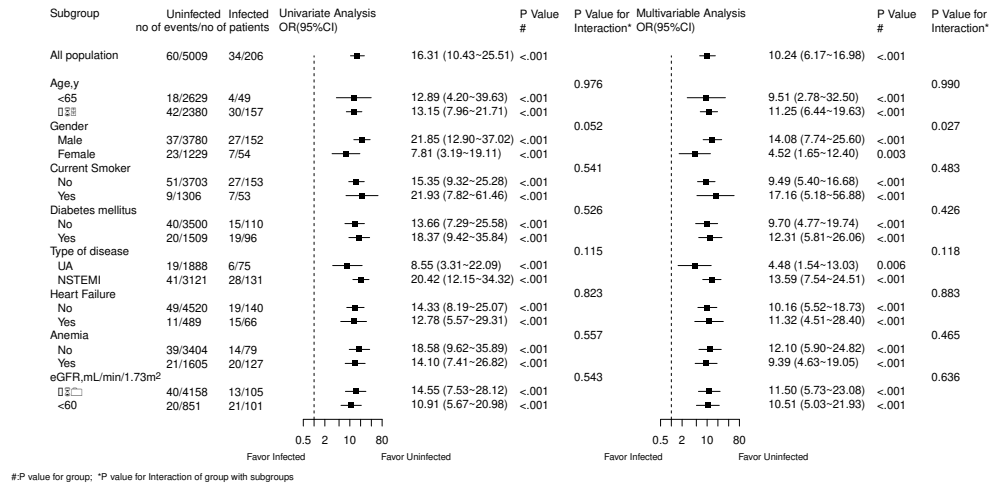
Figure S4. Subgroup analysis of in-hospital major bleeding

Figure S5. Subgroup analysis of in-hospital major adverse clinical events

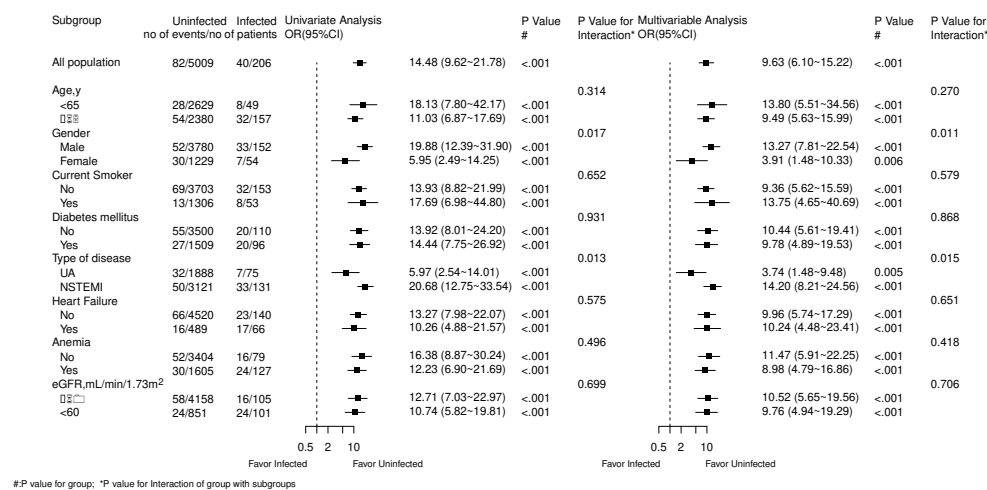


Figure S6. Distributions of propensity scores between the two groups before and after matching (the first row is the density plots and the second row is the QQ plots)

