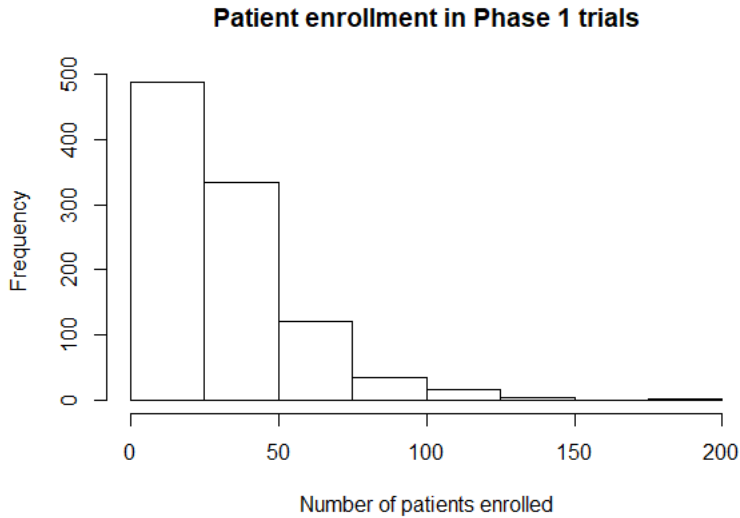


Supplementary Materials

Supplementary Table 1. 95% Confidence interval and rate estimate for therapeutic proportions

	level	rate estimate	Lower	Upper
sponsor	I	0.01356	0.005615	0.03273
	NI	0.004644	0.000938	0.02299
preapprovalapproval	N	0.004452	0.000781	0.0254
	Y	0.01414	0.006533	0.0306
monocombo	C	0.002421	0.000382	0.01534
	M	0.026	0.01015	0.06658
biomarker	N	0.003743	0.001157	0.01211
	Y	0.01682	0.004896	0.05779
hema	h	0.007195	0.001815	0.02852
	s	0.00875	0.00331	0.02313
drug class	c	0.01364	0.002665	0.0698
	i	0.002772	0.000358	0.02148
	o	0.01369	0.002143	0.08746
	t	0.007657	0.003341	0.01755
year	2005	0.02568	0.006084	0.1084
	2006	0.005323	0.001519	0.01865
	2007	0.002619	0.00036	0.01907
	2008	0.01487	0.003543	0.06241
	2009	0.006629	0.001527	0.02877
	2010	0.007068	0.001376	0.0363
single/mixed	mixed	0.004355	0.001224	0.01549
	single	0.01446	0.004784	0.04368

Supplementary Fig 1. Distribution of trial size



Supplementary Fig 2. Survival curve of drugs given therapeutically

