

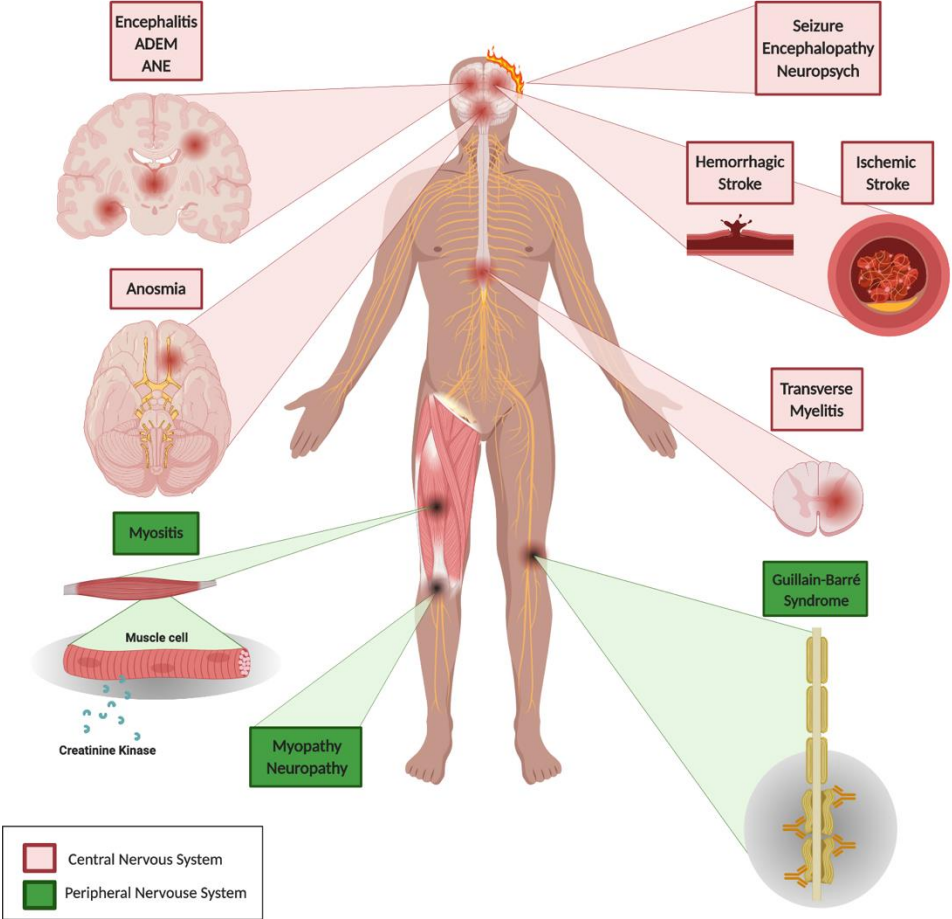
THE LANCET Neurology

Supplementary appendix

This appendix formed part of the original submission. We post it as supplied by the authors.

Supplement to: McAlpine LS, Zubair AS, Moeller J, Baehring J, Spudich S. Lessons from a neurology consult service for patients with COVID-19. *Lancet Neurol* 2020; **19**: 806–07.

Appendix 1. Central and peripheral nervous system sequelae of COVID-19. Cases of encephalitis, acute disseminated encephalomyelitis (ADEM), and acute necrotizing encephalopathy (ANE) have been reported, affecting the temporal lobe, subcortical white matter, and thalamus, respectively. Additionally, reports have described encephalopathy, seizures, and neuropsychiatric ailments, including psychosis and dementia-like syndromes.⁵



Appendix 2. Clinical Characteristics of Neurology Consults on Patients with COVID-19.

		Black n = 25	Hispanic n = 25	White & Other n = 50	Total n = 100
		Median (IQR)	Median (IQR)	Median (IQR)	Median (IQR)
Age, years		64 (58-74)	55 (45-68)	71 (63-80)	67 (58-76)
		n (%)	n (%)	n (%)	n (%)
Sex	Female	11 (44%)	9 (36%)	19 (38%)	39 (39%)
	Male	14 (56%)	16 (64%)	31 (62%)	61 (61%)
Chief Complaint	Dyspnea or Hypoxia	9 (36%)	11 (44%)	13 (26%)	33 (33%)
	Altered Mental Status	7 (28%)	3 (12%)	10 (20%)	20 (20%)
	Stroke	3 (12%)	1 (4%)	6 (12%)	10 (10%)
	Seizure	2 (8%)	1 (4%)	3 (6%)	6 (6%)
	Fall	1 (4%)	1 (4%)	8 (16%)	10 (10%)
	Fever	1 (4%)	2 (8%)	3 (6%)	6 (6%)
	Weakness	0 (0%)	2 (8%)	1 (2%)	3 (3%)
	Abdominal pain	0 (0%)	2 (8%)	1 (2%)	3 (3%)
	Cardiac Arrest	1 (4%)	0 (0%)	1 (2%)	2 (2%)
	Headache	0 (0%)	1 (4%)	1 (2%)	2 (2%)
	Other	1 (4%)	1 (4%)	3 (6%)	5 (5%)
Neurological Disease	Encephalopathy	5 (20%)	6 (24%)	8 (16%)	19 (19%)
	Seizure	10 (40%)	5 (20%)	16 (32%)	31 (31%)
	Ischemic Stroke	6 (24%)	5 (20%)	15 (30%)	26 (26%)
	Hemorrhagic Stroke	0 (0%)	3 (12%)	5 (10%)	8 (8%)
	Neuromuscular*	2 (8%)	2 (8%)	3 (6%)	7 (7%)
	Other pre-existing neurological condition	1 (4%)	2 (8%)	2 (4%)	5 (5%)
	Other	1 (4%)	2 (8%)	1 (2%)	4 (4%)

Mortality	Alive	15 (60%)	21 (84%)	30 (60%)	66 (66%)
	Deceased	10 (40)	4 (16%)	20 (40%)	34 (34%)

*Neuromuscular included suspected acute viral myositis, post-viral small fiber neuropathy, Guillain-Barré syndrome, and critical illness polymyopathy