

Supplementary Figures

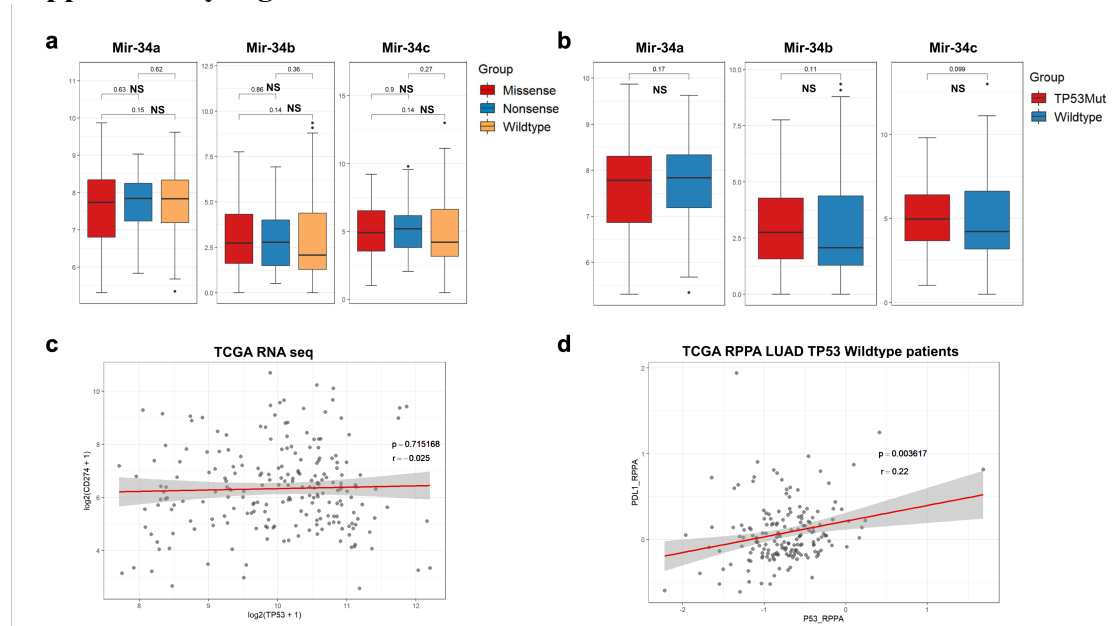


Figure S1 the correlation of TP53 status and Mir-34 family (a, b) (Wilcox test), TP53 and PD-L1 expression indicated no statically correlation in mRNA level(c) (Spearman), a statistically positive correlation between p53 and PDL1 was also generated in TP53 wildtype groups (d) (Spearman).

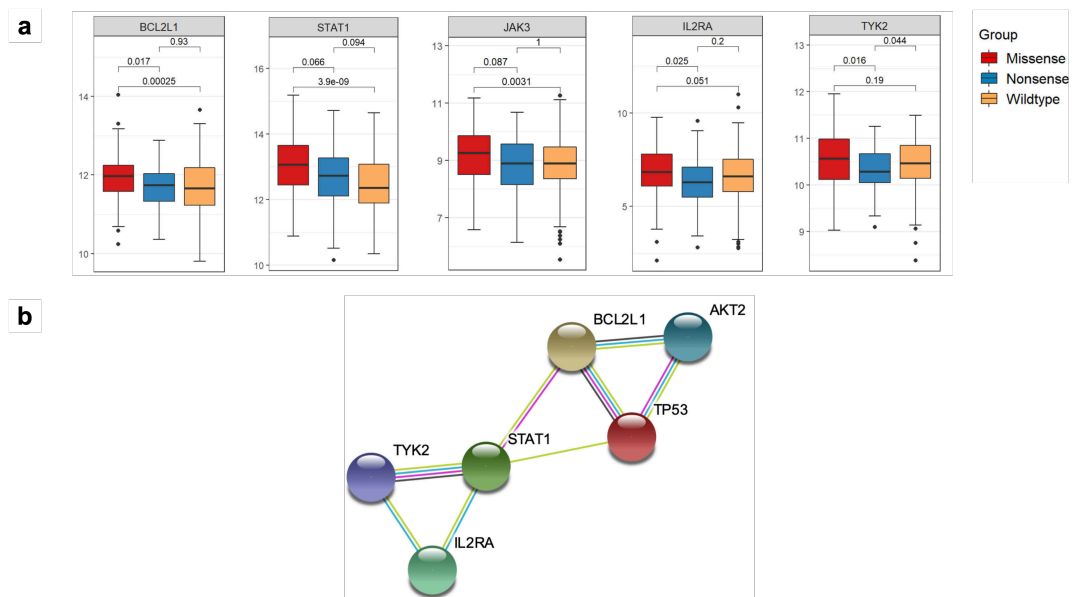


Figure S2 several key genomic expressions enriched in TP53 missense group compared with nonsense LUAD from TCGA regarding to JAK-STAT pathway (a) (Wilcox test), and the pathway is generated from STING analysis (b).

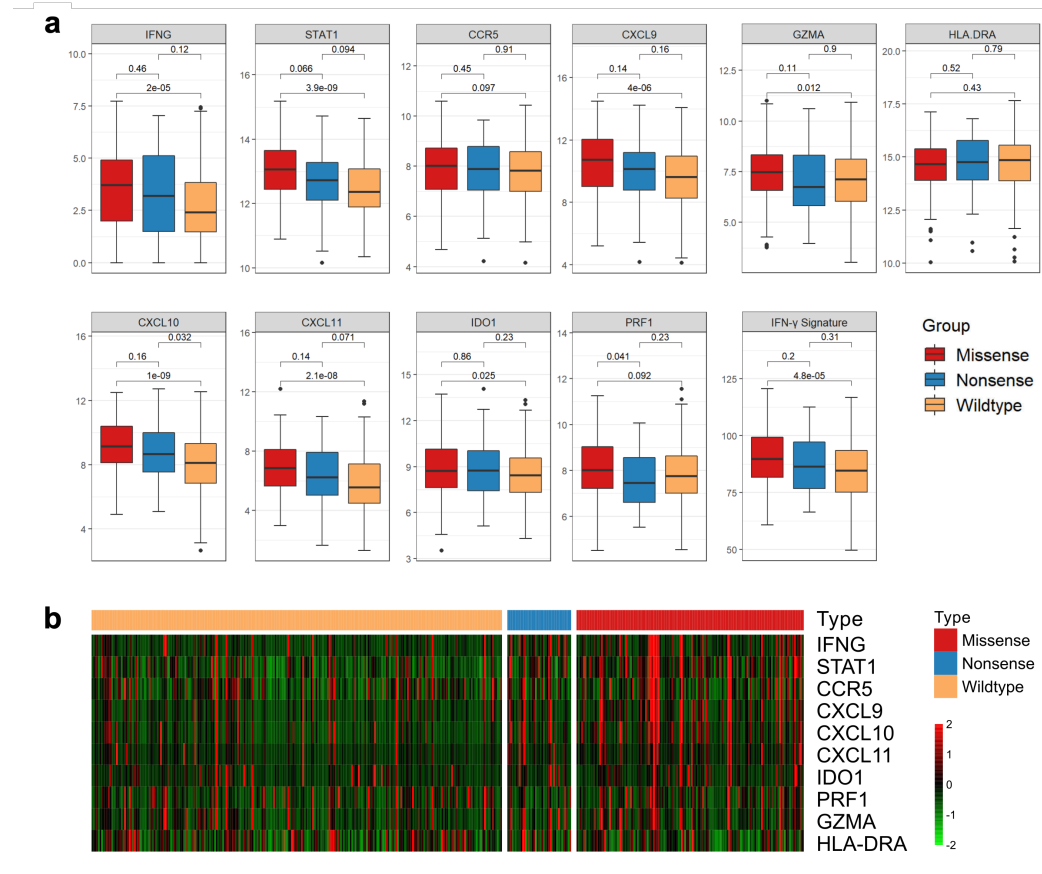


Figure S3

The correlation of IFN- γ signatures with different TP53 status, (a) showed the difference in expression of key elements regarding to IFN- γ between TP53 missense and nonsense group (Wilcox test). (b) the heatmap of IFN- γ showed the hot-zone in TP53 missense group.

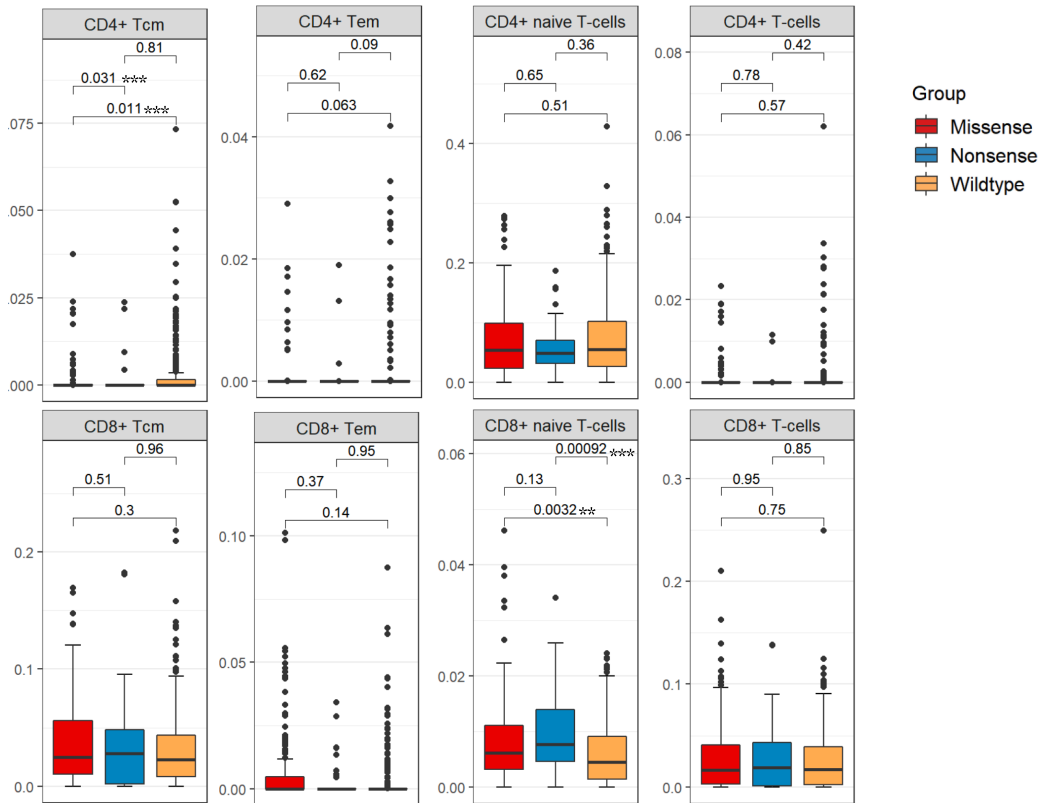


Figure S4

TME compositions as regard to specific T cell compositions correlation with different TP53 status (Wilcox test)

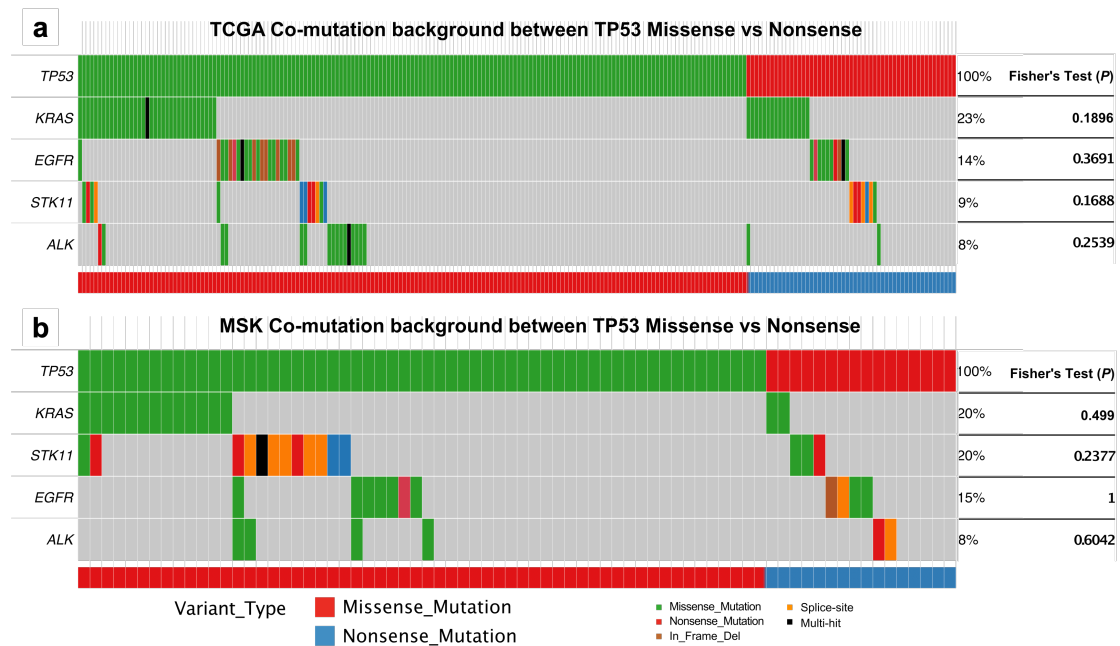


Figure S5

The commutation landscape regarding to KRAS/STK11/EGFR/ALK well balanced among TP53 missense and nonsense LUAD patients in cohort MSK and TCGA(a,b)

(Fisher's exact test)