

A.

Source data Figure 2

Replicate 1								Replicate 3							
	p21	Ct mean	Rpl7	Ct mean	$\Delta$ Ct	$\Delta\Delta$ Ct	RQ ( $2^{-\Delta\Delta Ct}$ )		p21	Ct mean	Rpl7	Ct mean	$\Delta$ Ct	$\Delta\Delta$ Ct	RQ ( $2^{-\Delta\Delta Ct}$ )
Scrambled	22.27	22.31	14.4	14.49	7.82	0.00	1.00		25.1	25.07	15.5	15.56	9.51	0.00	1.00
	22.43		14.44						25.04		15.6				
	22.24		14.64						25.07		15.57				
miR-291b mimic	22.55	22.49	14.43	14.49	8.00	0.18	0.88		25.12	25.50	15.78	15.71	9.78	0.27	0.83
	22.55		14.46						25.78		15.67				
	22.38		14.58						25.59		15.69				
miR-291b inhibitor	21.53	21.43	14.2	14.35	7.08	-0.74	1.67		24.2	24.41	15.93	15.79	8.61	-0.90	1.87
	21.41		14.49						24.65		15.67				
	21.34		14.35						24.37		15.78				
miR-292a mimic	22.93	22.60	14.42	14.35	8.25	0.43	0.74		25.47	25.40	15.77	15.70	9.69	0.18	0.88
	22.76		14.31						25.35		15.71				
	22.12		14.32						25.37		15.63				
miR-292a inhibitor	22.08	22.07	14.94	14.68	7.39	-0.43	1.34		24.83	24.48	15.92	15.93	8.55	-0.96	1.95
	22.03		14.76						23.82		15.99				
	22.1		14.33						24.79		15.87				
miR-294 mimic	22.96	23.00	14.37	14.49	8.51	0.69	0.62		26	26.11	15.68	15.61	10.50	0.99	0.50
	23		14.59						25.99		15.53				
	23.03		14.51						26.33		15.61				
miR-294 inhibitor	21.22	21.35	14.31	14.32	7.02	-0.80	1.74		24.17	24.23	15.44	15.60	8.63	-0.89	1.85
	21.37		14.38						24.16		15.79				
	21.45		14.28						24.35		15.57				
miR-295 mimic	23.5	23.30	14.05	14.00	9.31	1.49	0.36		25.88	26.04	15.84	15.84	10.20	0.68	0.62
	23.45		13.87						26.05		15.87				
	22.96		14.07						26.19		15.82				
miR-295 inhibitor	21.55	21.56	14.4	14.69	6.87	-0.95	1.93		24.09	24.06	15.78	15.89	8.17	-1.35	2.54
	21.62		14.71						24.22		15.98				
	21.5		14.95						23.87		15.92				

Replicate 2							
	p21	Ct mean	Rpl7	Ct mean	$\Delta$ Ct	$\Delta\Delta$ Ct	RQ ( $2^{-\Delta\Delta Ct}$ )
Scrambled	25.49	25.50	15.28	15.29	10.21	0.00	1.00
	25.44		15.37				
	25.57		15.22				
miR-291b mimic	25.93	26.11	15.41	15.28	10.83	0.62	0.65
	26.13		15.22				
	26.27		15.2				
miR-291b inhibitor	24.93	24.90	15.21	15.29	9.61	-0.60	1.51
	24.78		15.45				
	25		15.21				
miR-292a mimic	25.86	25.82	14.98	14.93	10.89	0.68	0.63
	25.76		14.92				
	25.83		14.89				
miR-292a inhibitor	24.98	25.11	15.32	15.39	9.72	-0.49	1.40
	25.65		15.43				
	24.7		15.42				
miR-294 mimic	26.21	26.10	15.65	15.63	10.47	0.26	0.84
	25.93		15.62				
	26.15		15.61				
miR-294 inhibitor	24.83	24.46	15.44	15.50	8.96	-1.25	2.37
	24.92		15.47				
	23.64		15.59				
miR-295 mimic	25.99	25.94	15.29	15.30	10.64	0.43	0.74
	25.72		15.34				
	26.1		15.27				
miR-295 inhibitor	24.91	25.32	16.37	16.40	8.92	-1.29	2.45
	25.46		16.36				
	25.58		16.46				

Replicate 1							
	p27	Ct mean	Rpl7	Ct mean	$\Delta$ Ct	$\Delta\Delta$ Ct	RQ ( $2^{-\Delta\Delta Ct}$ )
Scrambled	25.85	25.85	12.35	12.34	13.51	0.00	1.00
	25.78		12.27				
	25.93		12.41				
miR-294 mimic	26.17	26.24	12.68	12.47	13.78	0.27	0.83
	26.25		12.41				
	26.31		12.31				
miR-294 inhibitor	25.53	25.59	13.11	12.85	12.74	-0.77	1.70
	25.92		12.71				
	25.32		12.72				
miR-295 mimic	26.26	26.37	12.7	12.71	13.66	0.15	0.90
	26.36		12.62				
	26.49		12.82				
miR-295 inhibitor	24.76	25.03	12.23	12.27	12.77	-0.74	1.67
	24.95		12.03				
	25.39		12.54				

Replicate 2							
	p27	Ct mean	Rpl7	Ct mean	$\Delta$ Ct	$\Delta\Delta$ Ct	RQ ( $2^{-\Delta\Delta Ct}$ )
Scrambled	27.42	27.38	15.38	15.41	11.97	0.00	1.00
	27.34		15.42				
	27.38		15.44				
miR-294 mimic	27.42	28.03	15.43	15.41	12.62	0.65	0.64
	28.33		15.47				
	28.33		15.32				
miR-294 inhibitor	26.52	26.59	15.3	15.24	11.35	-0.62	1.53
	26.59		15.21				
	26.67		15.22				
miR-295 mimic	28.12	28.30	15.58	15.55	12.75	0.78	0.58
	28.53		15.61				
	28.24		15.46				
miR-295 inhibitor	26.99	27.16	15.77	15.70	11.46	-0.51	1.42
	27.36		15.53				
	27.12		15.79				

Replicate 3							
	p27	Ct mean	Rpl7	Ct mean	$\Delta$ Ct	$\Delta\Delta$ Ct	RQ ( $2^{-\Delta\Delta Ct}$ )
Scrambled	27.1	26.97	14.98	14.98	11.99	0.00	1.00
	26.88		14.91				
	26.92		15.04				
miR-294 mimic	27.96	27.89	15.32	15.19	12.71	0.72	0.61
	27.83		15.01				
	27.89		15.23				
miR-294 inhibitor	26.64	26.75	15.37	15.30	11.45	-0.54	1.46
	26.88		15.39				
	26.73		15.15				
miR-295 mimic	28.03	28.40	15.72	15.72	12.68	0.69	0.62
	28.34		15.76				
	28.82		15.68				
miR-295 inhibitor	27.83	27.24	15.78	15.75	11.49	-0.50	1.42
	26.92		15.73				
	26.97		15.75				

A. (Cont...)

Source data Figure 2

Replicate 1							
	Wet1	Ct mean	Rp17	Ct mean	ΔCt	ΔΔCt	RQ (2 <sup>-ΔΔCt</sup> )
Scrambled	22.34 22.29 22.42	22.35	18.35 18.26 18.42	16.34	6.01	0.00	<b>1.00</b>
miR-291b mimic	22.59 22.69 22.8	22.69	18.76 18.28 18.52	13.80	8.89	0.89	<b>0.54</b>
miR-291b inhibitor	20.5 20.5 20.41	20.47	18.28 18.39 18.52	16.40	4.07	-1.93	<b>3.82</b>
miR-294 mimic	21.25 21.29 21.47	21.34	18.96 18.98 17.93	17.29	6.05	0.04	<b>0.67</b>
miR-294 inhibitor	21.85 20.96	21	18.46 18.27 18.39	16.37	4.83	-1.38	<b>2.60</b>
miR-295 mimic	21.53 22.31 22.88	22.64	18.25 18.41 18.47	16.38	6.26	0.25	<b>0.84</b>
miR-295 inhibitor	20.89 20.83 20.92	20.88	16.2 16.27 16.3	16.32	4.56	-1.43	<b>2.71</b>
Replicate 2							
	Wet1	Ct mean	Rp17	Ct mean	ΔCt	ΔΔCt	RQ (2 <sup>-ΔΔCt</sup> )
Scrambled	21.89 22.21 22.07	22.06	18.88 18.72 18.54	15.71	6.34	0.00	<b>1.00</b>
miR-291b mimic	22.75 22.59 21.24	22.19	18.43 18.69 18.56	15.56	6.63	0.29	<b>0.82</b>
miR-291b inhibitor	20.18 20.77 20.23	20.39	18.87 18.83 18.81	15.84	4.56	-1.79	<b>1.45</b>
miR-294 mimic	22.21 22.3 22.11	22.27	18.22 18.31 18.51	15.35	6.93	0.58	<b>0.67</b>
miR-294 inhibitor	20.72 20.22 21.41	20.78	18.77 18.68 18.69	15.70	5.09	-1.26	<b>2.39</b>
miR-295 mimic	21.94 21.93 21.85	21.91	18.48 18.52 18.46	15.49	6.42	0.08	<b>0.95</b>
miR-295 inhibitor	20.43 20.63 20.84	20.69	18.86 18.79 18.82	15.82	4.81	-1.53	<b>2.89</b>
Replicate 3							
	Wet1	Ct mean	Rp17	Ct mean	ΔCt	ΔΔCt	RQ (2 <sup>-ΔΔCt</sup> )
Scrambled	27.1 26.88 26.92	26.97	18.21 18.35 18.24	15.27	11.70	0.00	<b>1.00</b>
miR-291b mimic	27 27.04 27.21	27.08	18.21 18.28 18.32	15.27	11.81	0.11	<b>0.82</b>
miR-291b inhibitor	25.13 25.22 25.3	25.22	18.67 18.62 18.59	15.63	9.59	-2.11	<b>4.12</b>
miR-294 mimic	27.23 27.92 27.68	27.61	18.73 18.71 18.78	15.74	11.87	0.17	<b>0.89</b>
miR-294 inhibitor	25.77 25.76 25.21	25.41	18.55 18.38 18.27	15.40	10.01	-1.69	<b>3.22</b>
miR-295 mimic	26.9 26.92 27.83	27.22	18.21 18.47 18.36	15.38	11.84	0.14	<b>0.91</b>
miR-295 inhibitor	25.76 25.34 25.83	25.64	18.22 18.19 18.28	15.23	10.41	-1.29	<b>2.44</b>

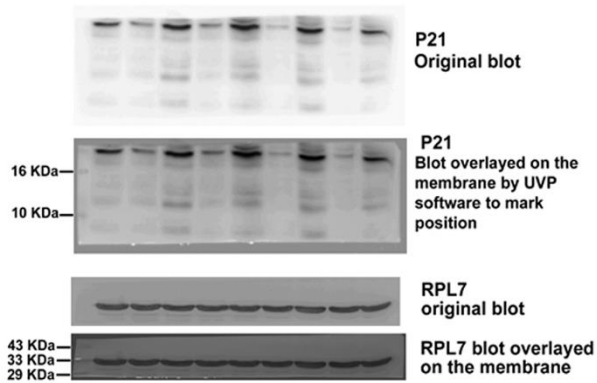
Replicate 1							
	Rp17	Ct mean	Rp17	Ct mean	ΔCt	ΔΔCt	RQ (2 <sup>-ΔΔCt</sup> )
Scrambled	27.44 27.47 27.92	27.61	18.97 18.94 18.95	15.55	11.66	0.00	<b>1.00</b>
miR-291b mimic	28.76 28.82 28.93	28.84	18.77 18.03 18.91	15.50	12.93	1.28	<b>0.41</b>
miR-291b inhibitor	25.87 25.91 25.82	25.87	18.84 18.9 18.97	15.50	9.96	-1.69	<b>3.23</b>
Replicate 2							
	Rp17	Ct mean	Rp17	Ct mean	ΔCt	ΔΔCt	RQ (2 <sup>-ΔΔCt</sup> )
Scrambled	25.49 25.44 25.57	25.50	16.23 16.17 16.03	16.14	9.36	0.00	<b>1.00</b>
miR-291b mimic	26.22 26.15 26.29	26.22	18.98 16.02 16.1	16.03	10.19	0.83	<b>0.56</b>
miR-291b inhibitor	23.2 23.03 23.91	23.68	16.31 16.25 16.16	16.24	7.44	-1.92	<b>3.78</b>

Replicate 1							
	Rp17	Ct mean	Rp17	Ct mean	ΔCt	ΔΔCt	RQ (2 <sup>-ΔΔCt</sup> )
Scrambled	25.39 25.45 25.27	25.37	18.76 18.63 18.77	15.63	9.74	0.00	<b>1.00</b>
miR-291b mimic	25.88 25.83 25.69	25.67	18.7 18.56 18.7	15.66	10.01	0.27	<b>0.83</b>
miR-291b inhibitor	23.12 23.16 22.91	23.06	18.59 18.5 18.59	15.58	7.50	-2.24	<b>4.71</b>
miR-294 mimic	25.73 25.76 25.93	25.80	18.49 18.45 18.49	15.48	10.31	0.59	<b>0.67</b>
miR-294 inhibitor	22.87 23.93 22.83	23.11	18.52 18.94 18.52	15.66	7.45	-2.29	<b>4.89</b>
miR-295 mimic	25.89 25.93 26.13	25.98	18.59 18.48 18.61	15.55	10.43	0.69	<b>0.62</b>
miR-295 inhibitor	23.17 23.13 23.89	23.23	18.44 18.69 18.45	15.53	7.70	-2.04	<b>4.19</b>
Replicate 2							
	Rp17	Ct mean	Rp17	Ct mean	ΔCt	ΔΔCt	RQ (2 <sup>-ΔΔCt</sup> )
Scrambled	26.26 26.21 26.37	26.28	18.11 18.09 18.24	15.11	11.13	0.00	<b>1.00</b>
miR-291b mimic	26.53 27.68 26.76	26.77	18.58 18.57 18.49	15.55	11.23	0.69	<b>0.94</b>
miR-291b inhibitor	24.98 25.21 25.67	25.09	18.82 18.91 18.81	15.83	9.24	-1.89	<b>3.71</b>
miR-294 mimic	26.73 26.81 26.89	26.81	14.97 18.02 18.21	15.07	11.74	0.61	<b>0.66</b>
miR-294 inhibitor	24 25.11 24.76	24.66	18.69 18.78 18.75	15.72	8.93	-2.20	<b>4.59</b>
miR-295 mimic	27.59 27.95 27.77	27.77	18.5 18.48 18.44	15.47	12.30	1.16	<b>0.46</b>
miR-295 inhibitor	24.63 24.57 24.11	24.44	18.78 18.54 18.88	15.72	8.72	-2.42	<b>5.34</b>
Replicate 3							
	Rp17	Ct mean	Rp17	Ct mean	ΔCt	ΔΔCt	RQ (2 <sup>-ΔΔCt</sup> )
Scrambled	27.1 26.88 26.92	26.97	14.95 14.83 14.91	14.90	12.07	0.00	<b>1.00</b>
miR-291b mimic	28.15 27.84 27.81	27.97	18.41 18.52 18.64	15.42	12.44	0.37	<b>0.77</b>
miR-291b inhibitor	24.73 24.52 25.31	24.85	14.86 15.01 14.92	14.96	9.89	-2.18	<b>4.53</b>
miR-294 mimic	27.94 28.64 27.92	28.17	18.92 18.18 18.88	15.99	12.17	0.10	<b>0.93</b>
miR-294 inhibitor	24.69 24.73 25.35	24.92	18.21 18.37 18.26	15.28	9.64	-2.43	<b>5.38</b>
miR-295 mimic	29.76 29.49 28.68	29.31	18.63 14.92 18.37	15.31	14.00	1.93	<b>0.26</b>
miR-295 inhibitor	25.87 24.93 25.38	25.39	18.58 18.38 18.52	15.49	9.90	-2.17	<b>4.90</b>

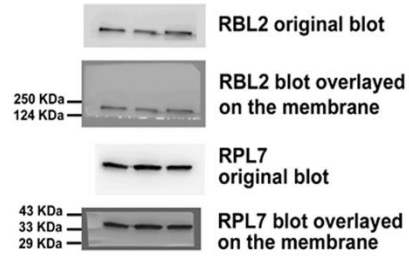
B.

Source data Figure 2

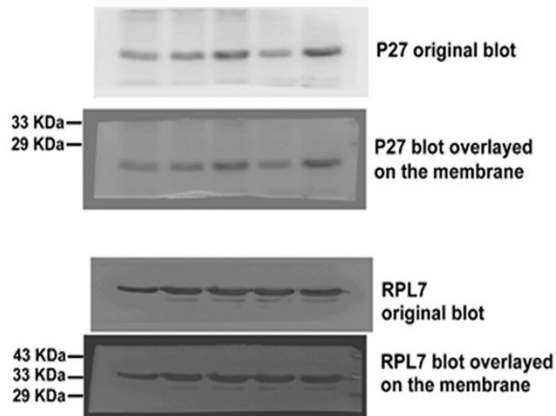
For Figure 2B, P21 and RPL7



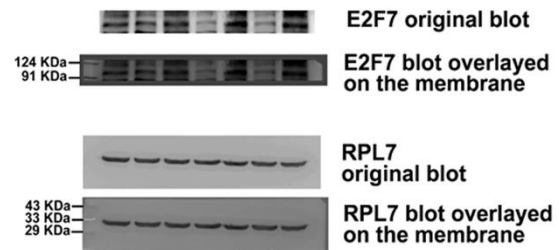
For Figure 2B, RBL2 and RPL7



For Figure 2B, P27 and RPL7



For Figure 2B, E2F7 and RPL7



For Figure 2B, WEE1 and RPL7

