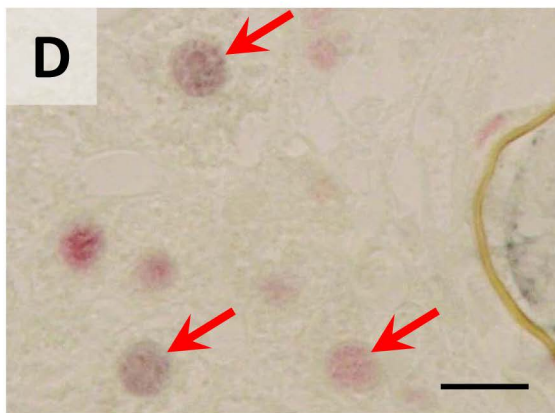
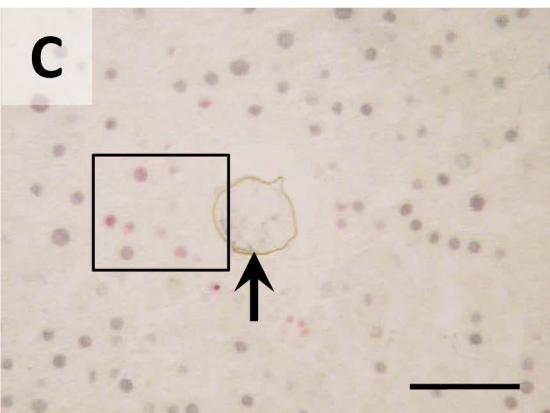
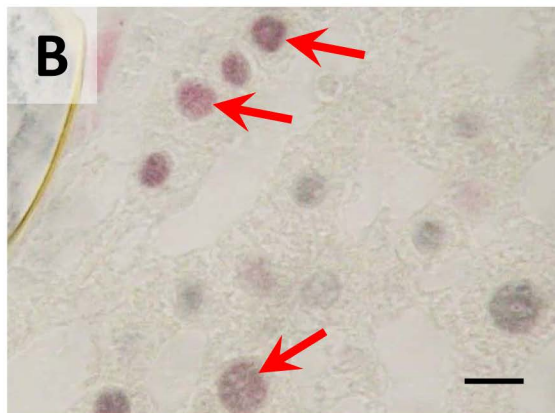
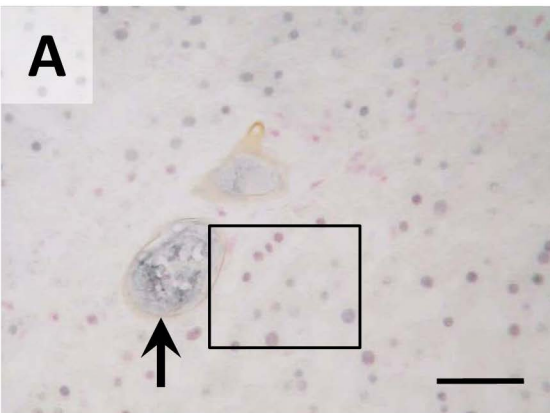
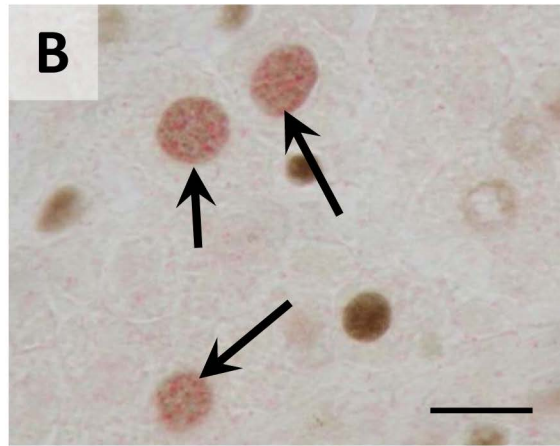
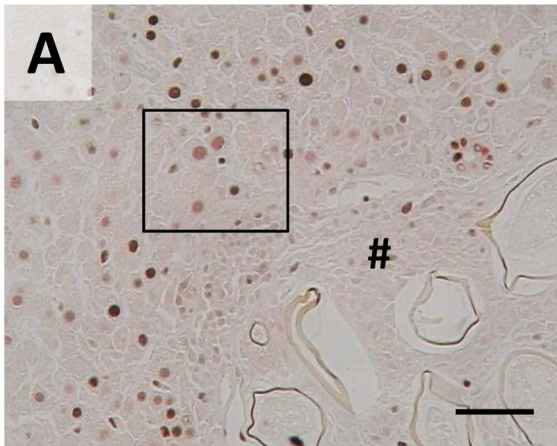


Suppl. Figure 1



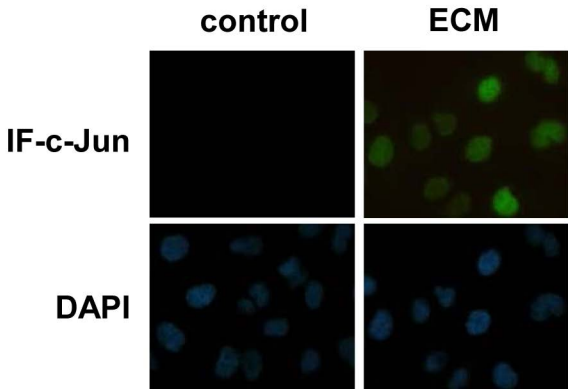
Suppl. Fig. 1: Liver-trapped eggs of *S. mansoni* before granuloma formation in hamster liver. (A-D) Immunohistochemical staining of c-Jun (red) and HNF4α (grey) in hepatocyte nuclei around *S. mansoni* eggs without granuloma (arrows). *S. mansoni* egg (arrow). Magnifications are 400x (A and C) and 1000x (B and D). Space bars are 50 μm (A and C) and 10 μm (B and D).

Suppl. Figure 2



Suppl. Fig. 2: Co-immunostaining of PCNA and p27 in hepatocytes around granuloma (A and B) Immunohistochemical staining of PCNA (grey) and p27 (red) points out simultaneous DNA-replication with cells cycle inhibition in the same hepatocytes (arrows) around the granuloma with multiple eggs (hash). Magnification 200x (A) and 1000x (B). Bars 50 μm (A), 10 μm (B).

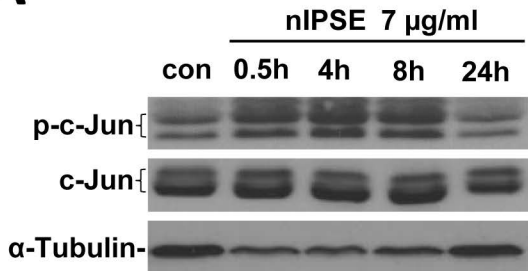
Suppl. Figure 3



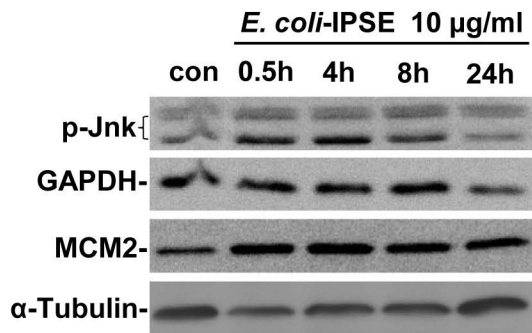
Suppl. Fig. 3: Immunofluorescence analysis demonstrated the accumulation of c-Jun in the nuclei of SEA-stimulated Huh7 cells. Lower panels DAPI, 1000x.

Suppl. Figure 4

A

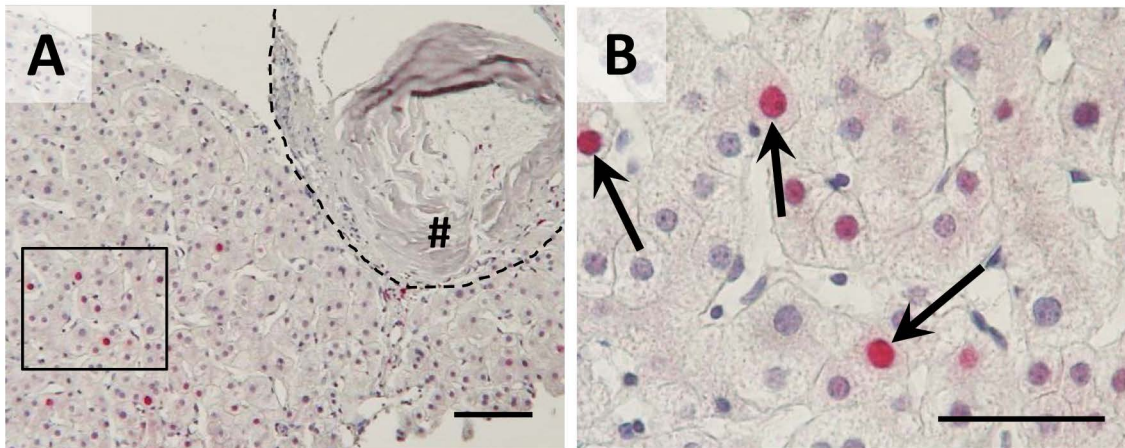


B



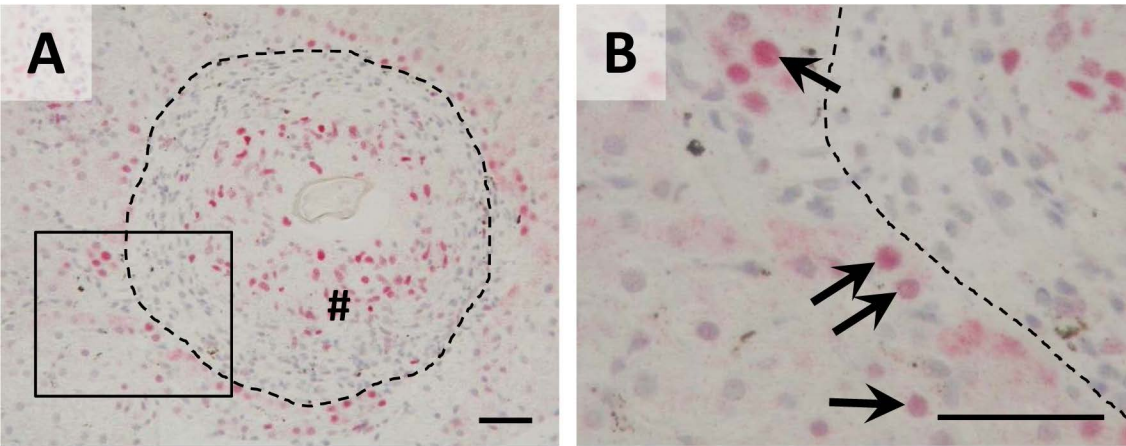
Suppl. Fig. 4: Representative Western blots demonstrating JNK and c-Jun activation as well as enhanced expression of MCM2 by *S. mansoni* derived IPSE in hiPS-Hep. (A) Temporal stimulation pattern of c-Jun with natural IPSE affinity purified from *S. mansoni* eggs. (B) Temporal stimulation pattern of Jnk and MCM2 with recombinant IPSE produced in *E. coli*.

Suppl. Figure 5



Suppl. Fig. 5: Immunostaining of Ki67 in hepatocytes around granuloma in human schistosomiasis (A and B) Immunohistochemical staining of Ki67 (red) in combination with haematoxylin nuclear staining points out proliferation of hepatocytes around the granuloma (hash). Magnification 100x (A) and 400x (B). Bars 100 μ m (A), 50 μ m (B). # granuloma, dashed line granuloma border.

Suppl. Figure 6



Suppl. Fig. 6: Immunostaining of c-Jun in hepatocytes around granuloma in human schistosomiasis (A and B) Immunohistochemical staining of c-Jun (red) in combination with haematoxylin nuclear staining (blue) demonstrates nuclear translocation of c-Jun (arrows) in hepatocytes around the granuloma (hash). Magnification 200x **(A)** and 400x **(B)**. Bars 50 μm . # granuloma, dashed line granuloma border.