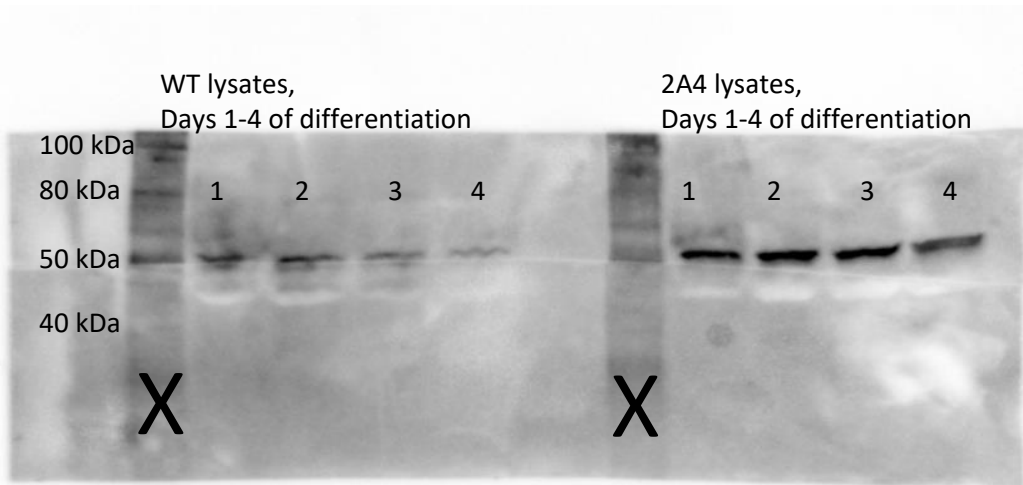


Western blot in Figure 3C

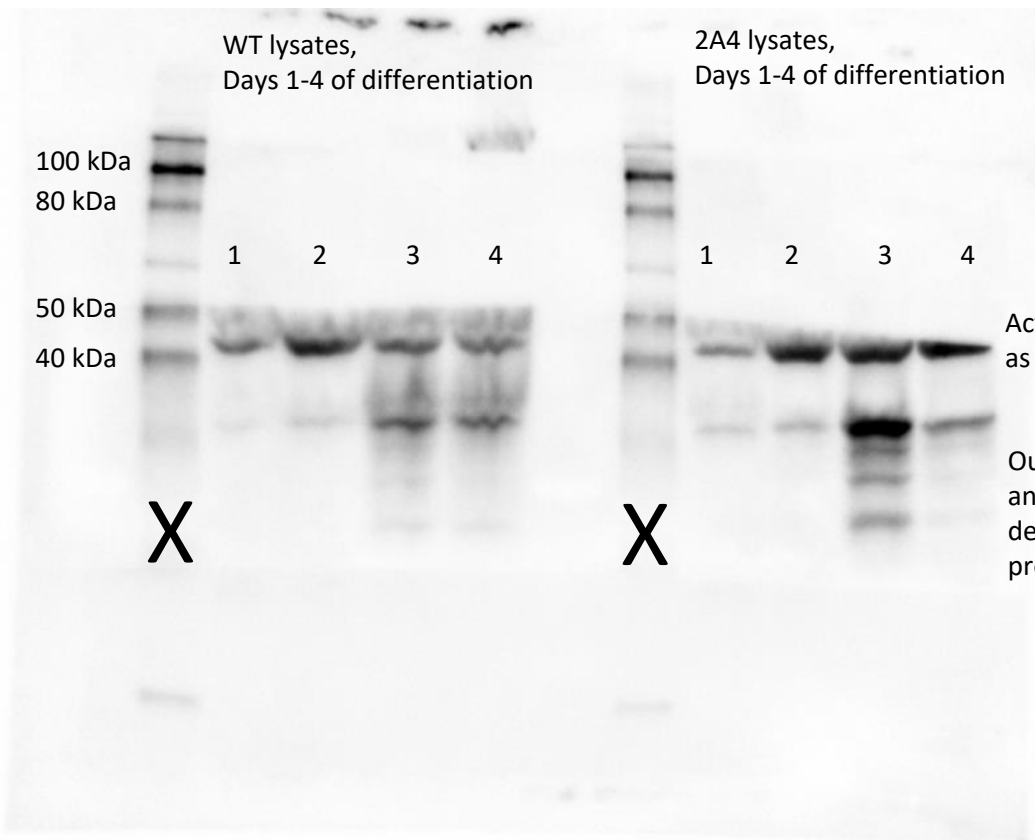
Probed with anti-MyoD and anti-biotin (ladder):



MyoD is 34kDa, but is heavily glycosylated and runs at 50 kDa

This blot was stripped and re-probed after blotting with anti pan-actin, so it had been cut and reassembled along the 50 kDa region.

Probed with anti-pan actin & anti-biotin (ladder):



Actin is 45kDa--we used this band as a loading control

Our polyclonal pan-actin antibody non-specifically detected some small MW proteins.