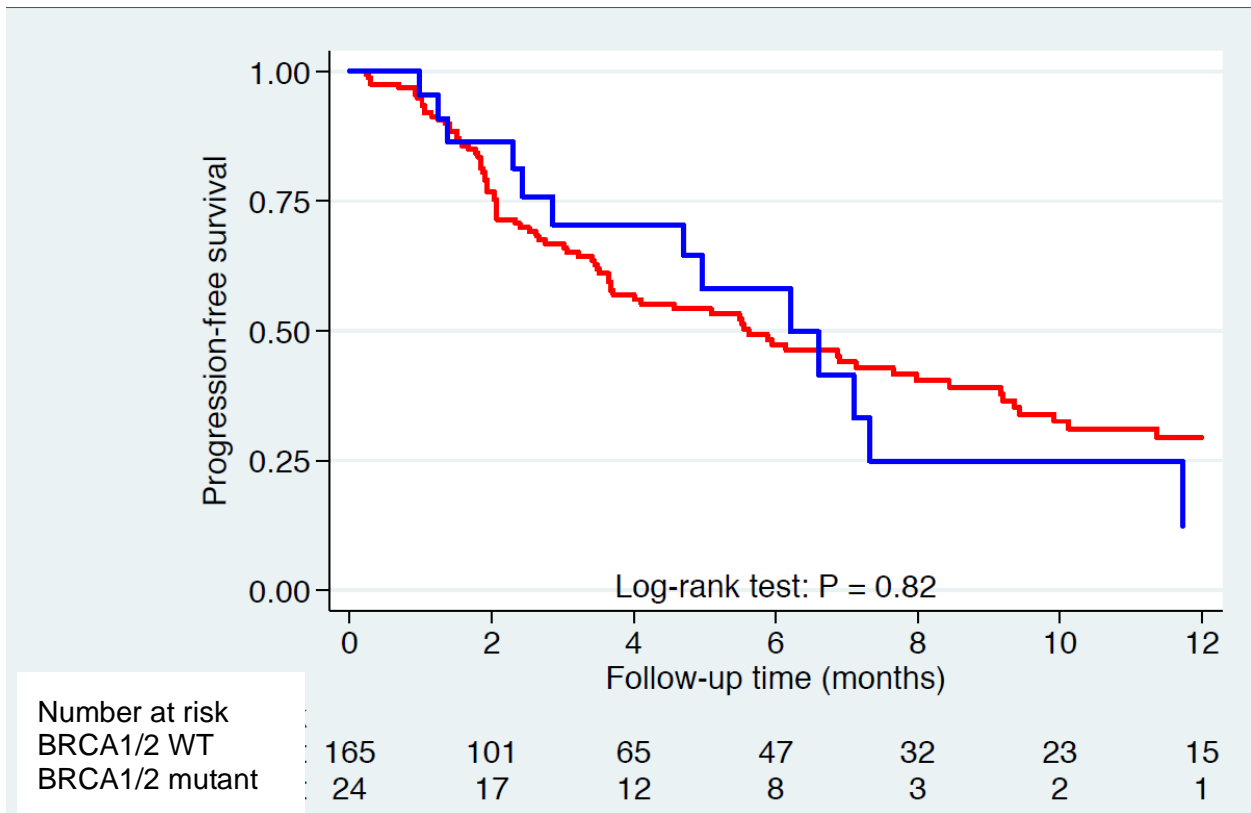
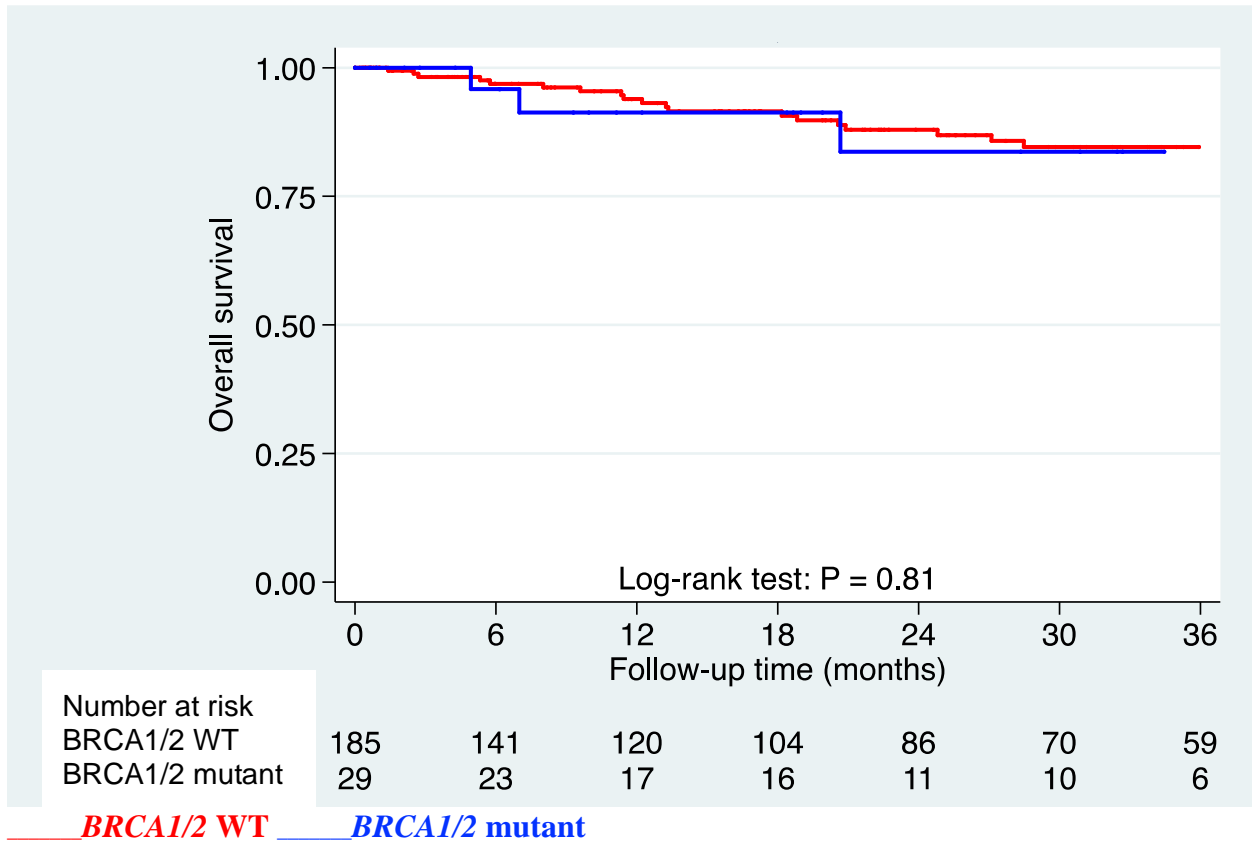


**Supplemental Figure S2a. Progression-free survival (PFS) on the first therapy post-cfDNA testing in patients with cfDNA *BRCA1/2* mutant vs. *BRCA1/2* wild-type (WT) metastatic breast cancer.**

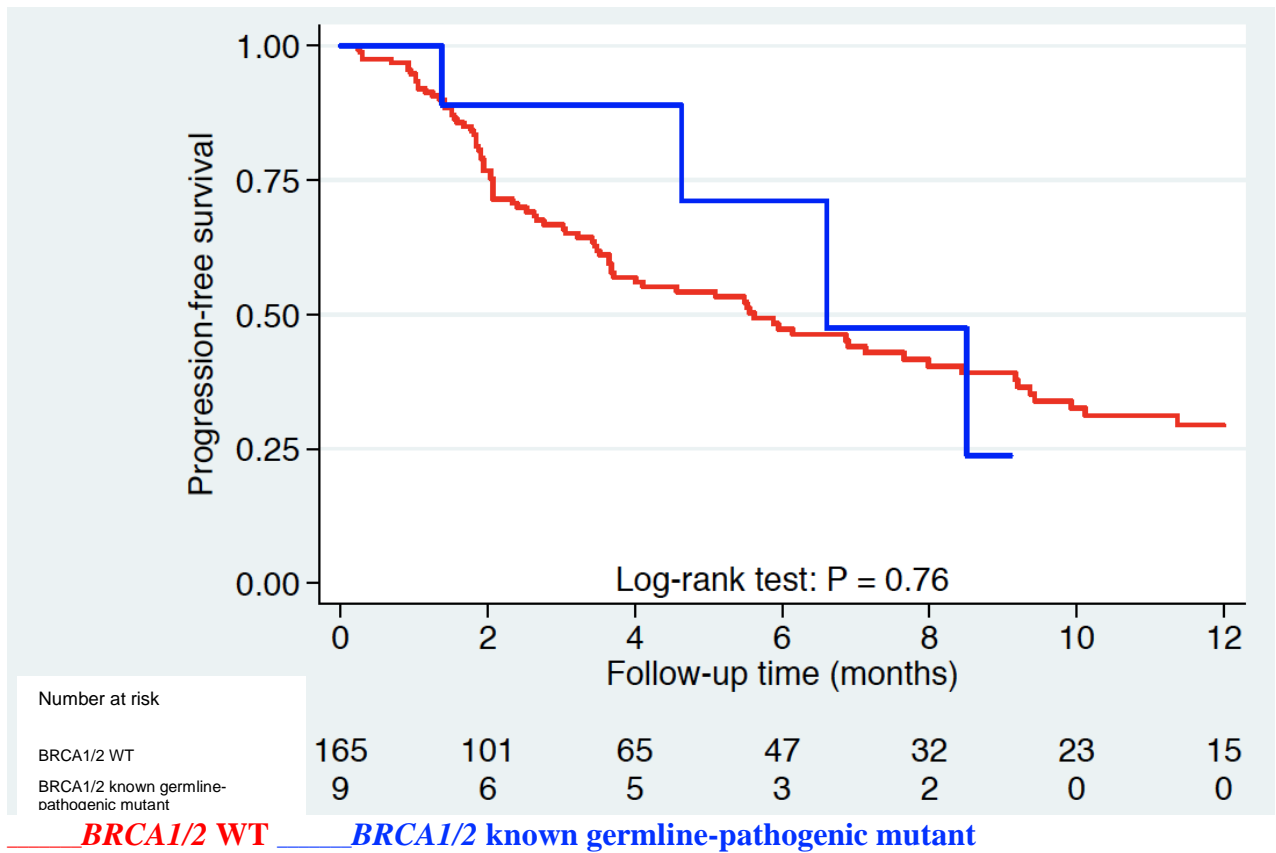


— *BRCA1/2* WT — *BRCA1/2* mutant

**Supplemental Figure S2b. Overall survival in patients with cfDNA *BRCA1/2* mutant vs. *BRCA1/2* wild-type (WT) metastatic breast cancer.**



**Supplemental Figure S2c. Progression-free survival (PFS) on the first therapy post-cfDNA testing in patients with cfDNA *BRCA1/2* known germline-pathogenic mutant vs. *BRCA1/2* wild-type (WT) metastatic breast cancer.**



**Supplemental Figure S2d. Overall survival in patients with cfDNA known germline-pathogenic *BRCA1/2* mutant vs. *BRCA1/2* wild-type (WT) metastatic breast cancer.**

