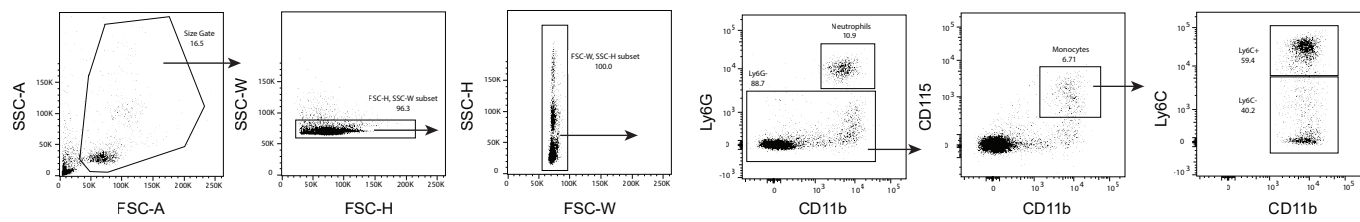


## Supplemental Figure 1



**Supplemental Figure 1.** Blood immune cell gating strategy. Cells were first gated based on size (FSC-A/SSC-A), then singlet cells were selected using serial FSC-H/SSC-W and FSC-W/SSC-H gating. Neutrophils were identified by expression of CD11b and Ly6G. From the Ly6G-negative population, monocytes were selected by expression of CD11b and CD115. Monocytes were subsequently separated into classical (Ly6C+) and nonclassical (Ly6C-) populations.