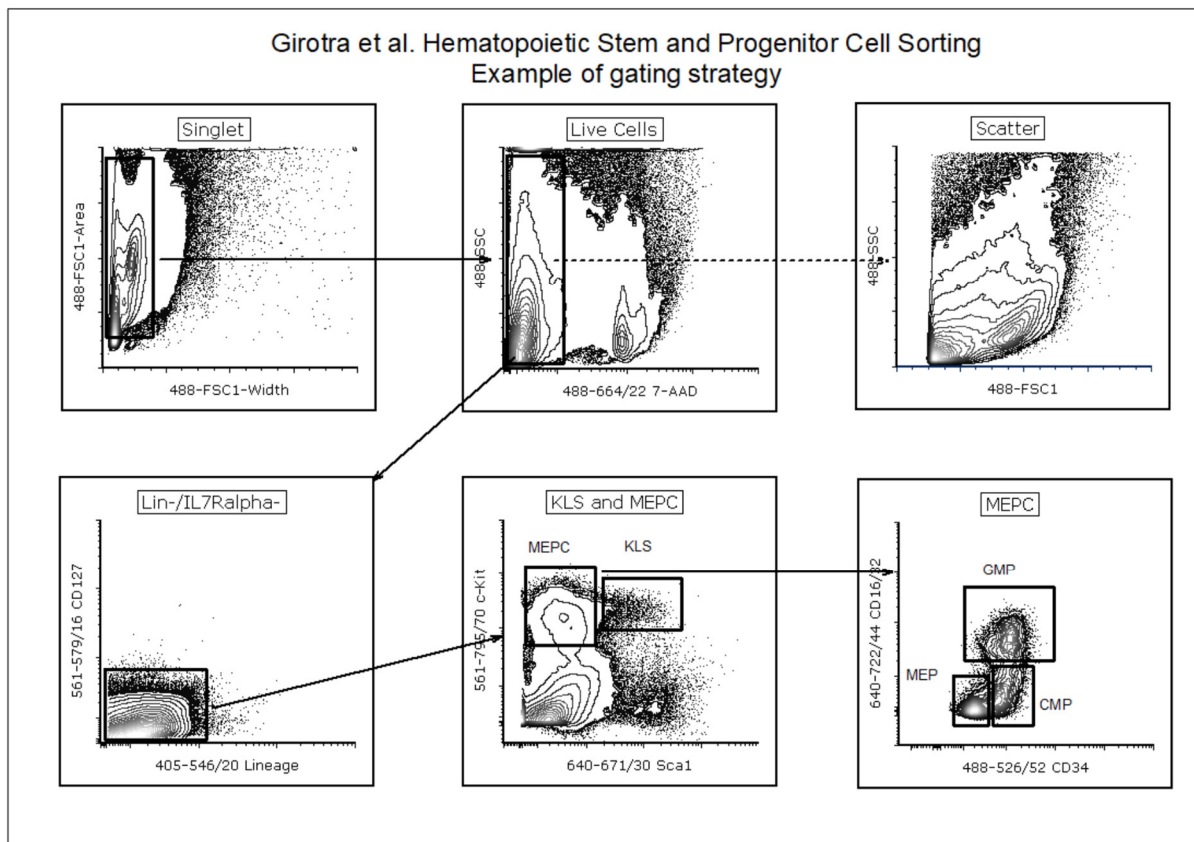
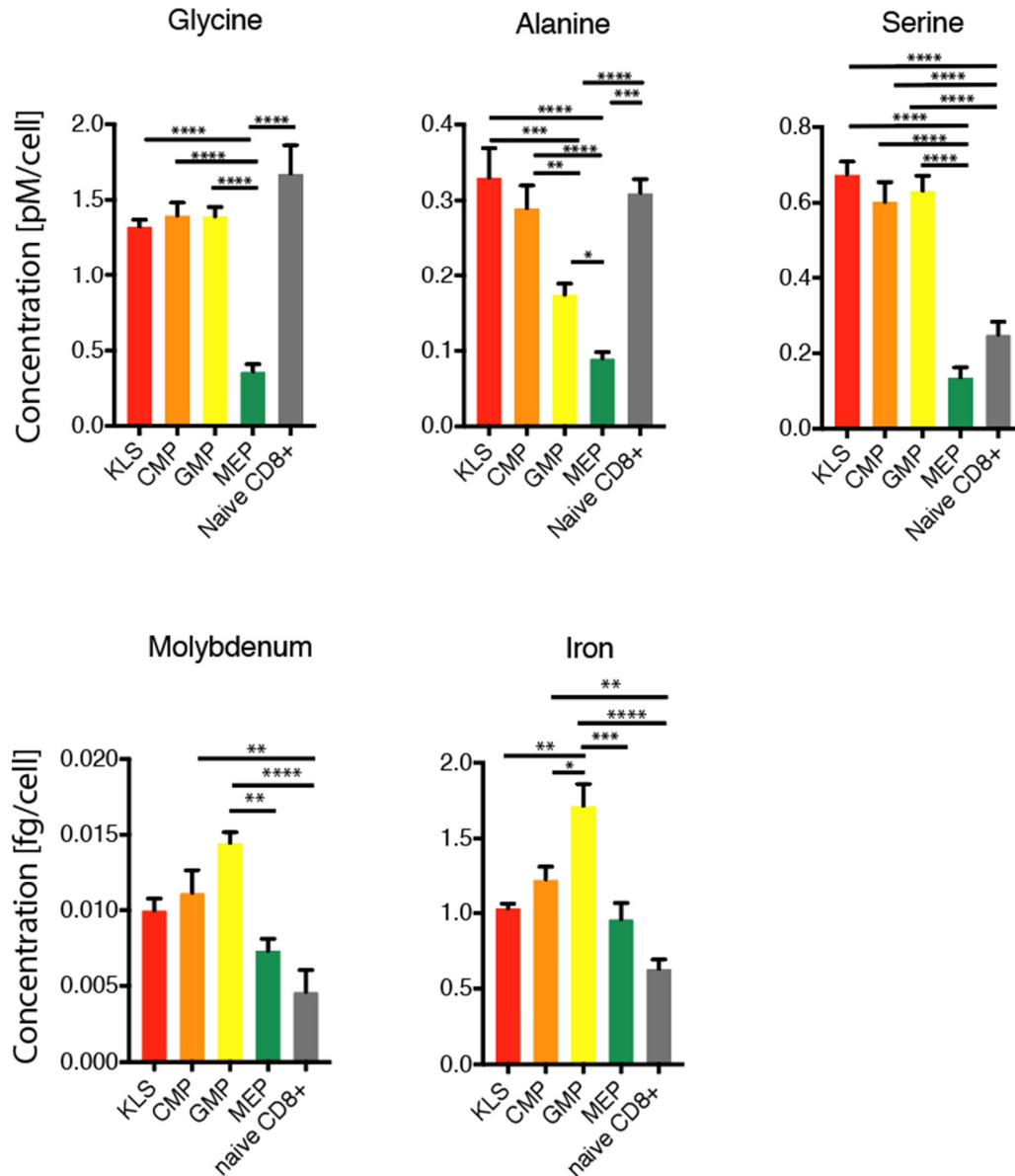


# Supplementary Figure 1



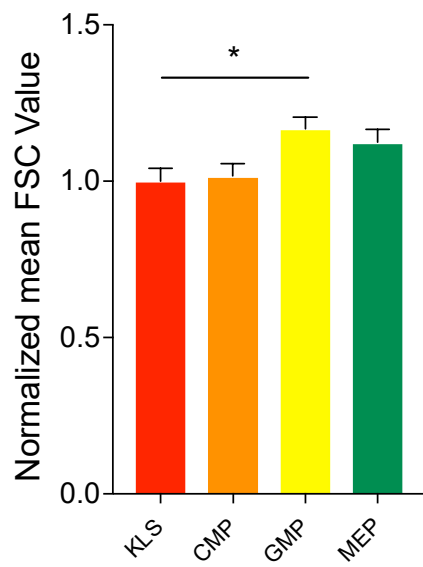
**Supp Figure 1: Full Gating strategy to identify different HSPC populations from the mouse bonemarrow.**

Supplementary Figure 2



**Supp Figure 2: Aminoacid and mineral profile comparison between HSPCs and CD8+ naive T cells.** Different populations from the mouse BM and CD8+ naive T cells from mouse spleen were FACS sorted for amino acid and mineral analysis. KLS: Lin-cKit+Sca1+; CMP: Common Myeloid Progenitor; GMP: Granulocyte Macrophage Progenitor; MEP: Megakaryocyte Erythroid Progenitor; naïve CD8+: CD3+CD8+CD62L+CD44-. One-way Anova \*p<0.05, \*\*p<0.01, \*\*\*p<0.001, \*\*\*\*p<0.0001. (n=3)

### Supplementary Figure 3



**Supp Figure 3: FSC based cell size analysis of different bonemarrow HSPC populations.**  
One-way Anova \* $p < 0.05$ , \*\* $p < 0.01$ , \*\*\* $p < 0.001$ , \*\*\*\* $p < 0.0001$ . (n=6)