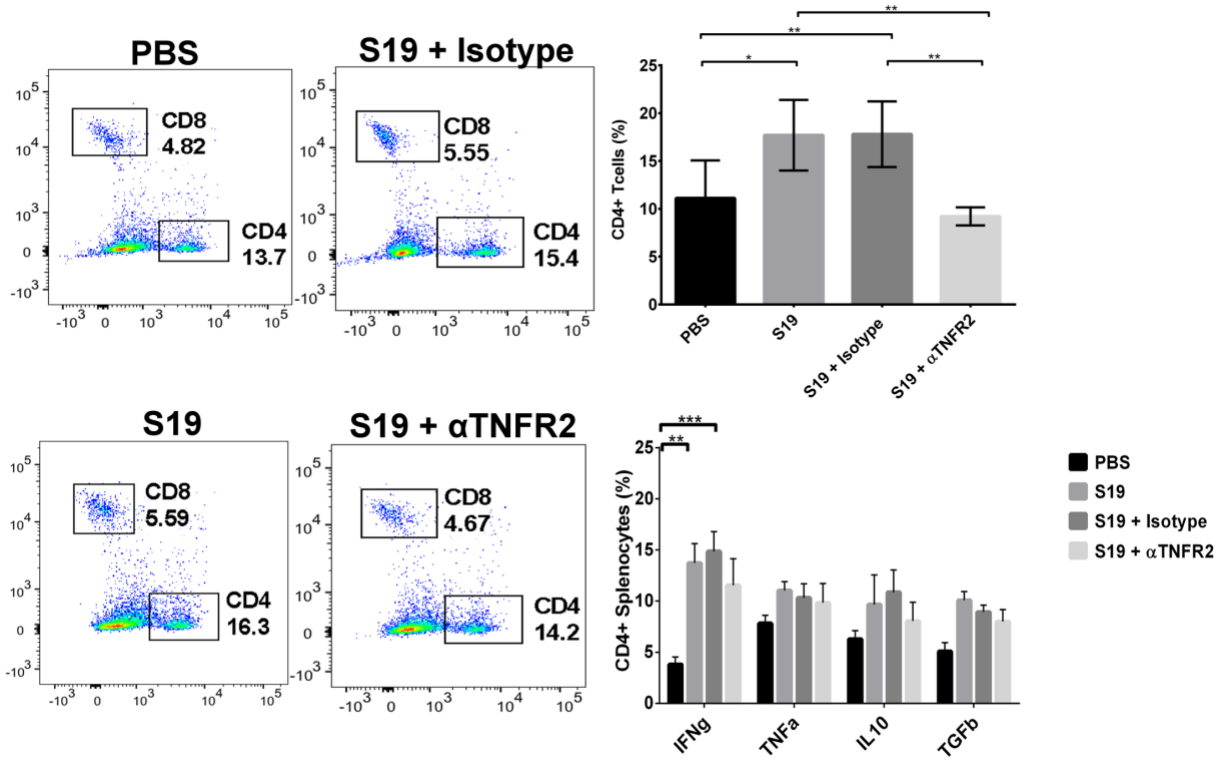


S1. Flow cytometry gating strategy for regulatory T Cells. Spleen tissues were processed and stained for T cell markers CD4, CD8, TNFR2, and FOXP3. Lymphocytes were first identified by a low forward scatter (FSC) and low side scatter (SSC) gate. The figure indicates the gating strategy for identifying the cell types.



S2: Effector CD4+ T cells are the predominant T cell response during *B. abortus* infection and a major producer of protective cytokines. Percentage of CD4+ and CD8+ splenocytes and cytokines produced by each cell population in mice infected with *B. abortus* S19 with or without treatment with TNFR2 antagonistic antibodies. Bar represents mean +/- standard deviation (n=5).