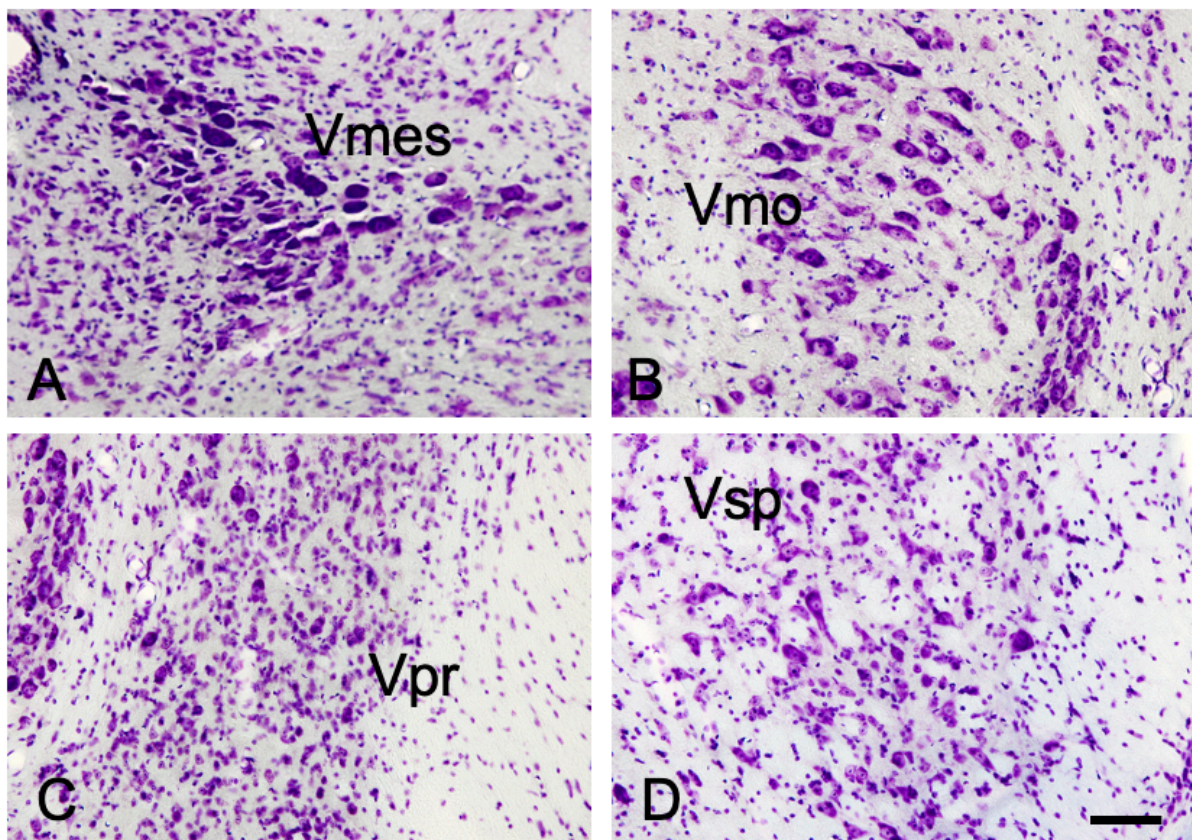
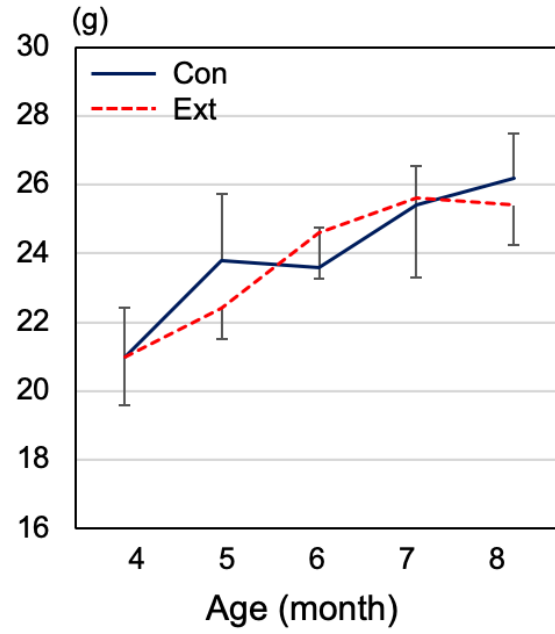


## Supplementary Material

Neurodegeneration of Trigeminal Mesencephalic Neurons by the Tooth Loss Triggers the Progression of Alzheimer's Disease in 3×Tg-AD Model Mice



**Supplementary Figure 1.** The distribution of A $\beta$  (6E10)-IR neurons in the trigeminal nervous system in 4-month-old C57BL/6 mice. The sections were counterstained with cresyl violet. No A $\beta$  (6E10)-IR neurons were found in Vmes (A), Vmo (B), Vpr (C), and Vsp (D). Scale bar: 50  $\mu$ m.



**Supplementary Figure 2.** Weight change after tooth extraction. The change in body weight after tooth extraction of 3×Tg-AD mice (Ext) was compared with that of sham mouse without tooth extraction (Con). The data are the means  $\pm$  SDs, n=10.