

Supplementary material to:
National all-cause mortality during the
COVID-19 pandemic. A Danish registry-
based study.

Elisabeth Helen Anna Mills, MD;¹ Amalie Lykkemark Møller, MSPH;² Filip Gnesin, MB;² Nertila Zilyftari, MD²; Marcella Broccia, MD;^{2,3} Britta Jensen, MSPH;⁴ Morten Schou, MD, PhD;⁵ Emil L. Fosbøl, MD, PhD⁶; Lars Køber, MD DMSc;⁶ Mikkel Porsborg Andersen, MSPH, PhD;² Matthew Phelps;⁷ Thomas Gerds⁸, Christian Torp-Pedersen, MD, DMSc;^{1,2,7}

¹Department of Cardiology, Aalborg University Hospital, Aalborg, Denmark

²Department of Clinical Research, Nordsjællands Hospital, Hillerød, Denmark

³Department of Obstetrics and Gynaecology, Aalborg University Hospital, Aalborg, Denmark

⁴Department of Health Science and Technology, Aalborg University, Denmark

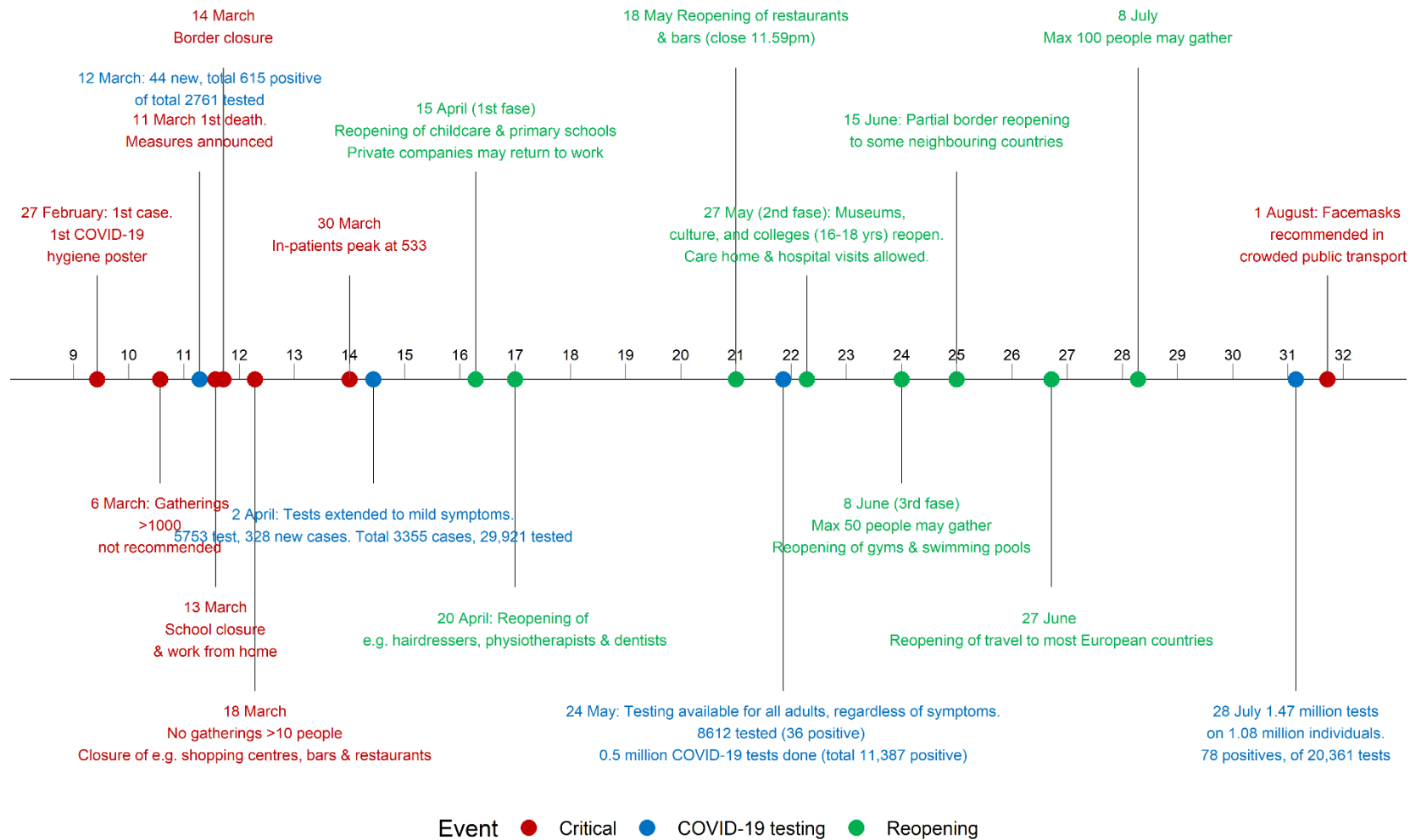
⁵Department of Cardiology, Herlev-Gentofte Hospital, Copenhagen, Denmark

⁶Department of Cardiology, Rigshospitalet, Copenhagen, Denmark

⁷Department of Cardiology, Nordsjællands Hospital, Hillerød, Denmark

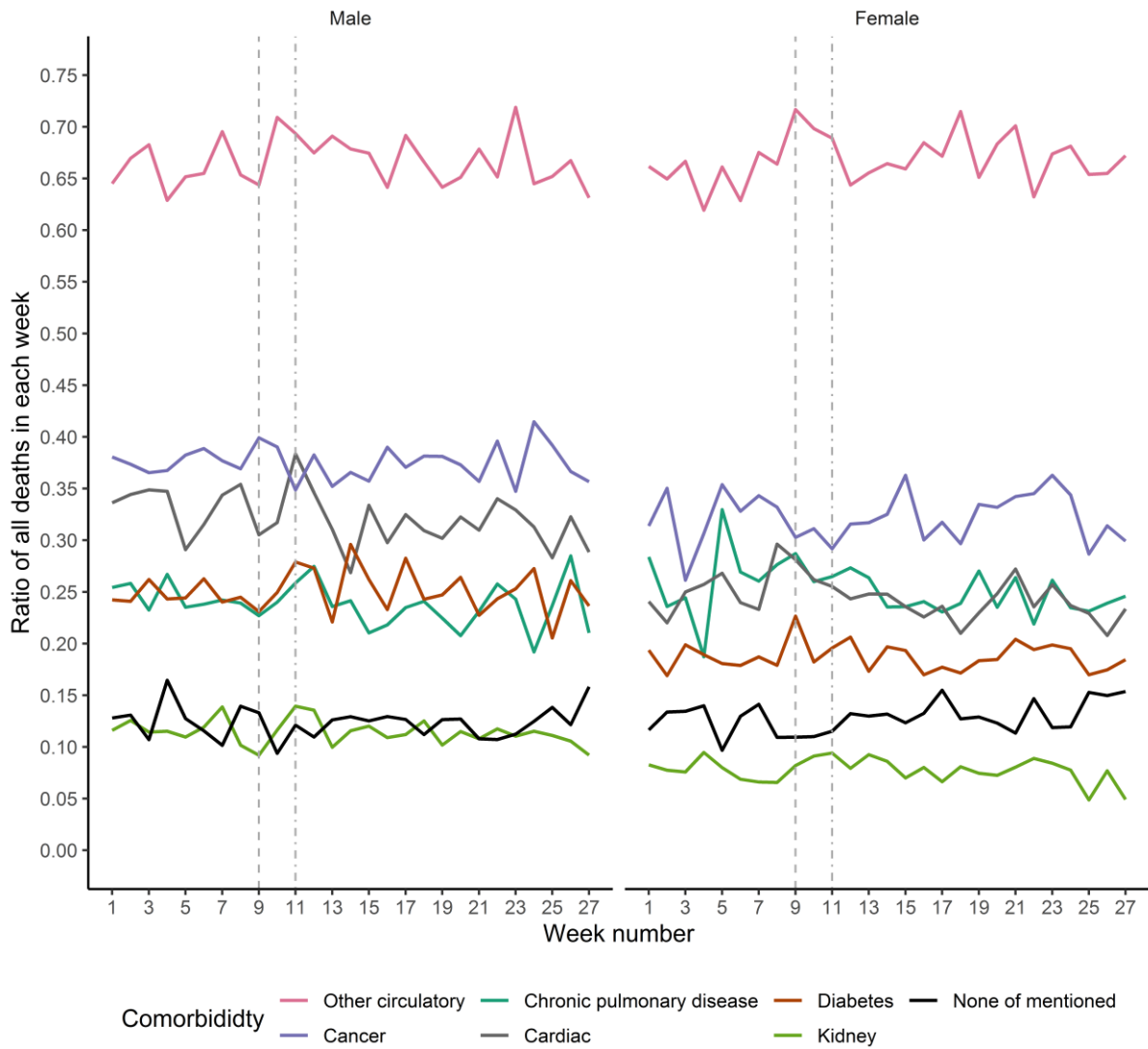
⁸Department of Biostatistics, University of Copenhagen, Denmark.

Timeline of events in Denmark

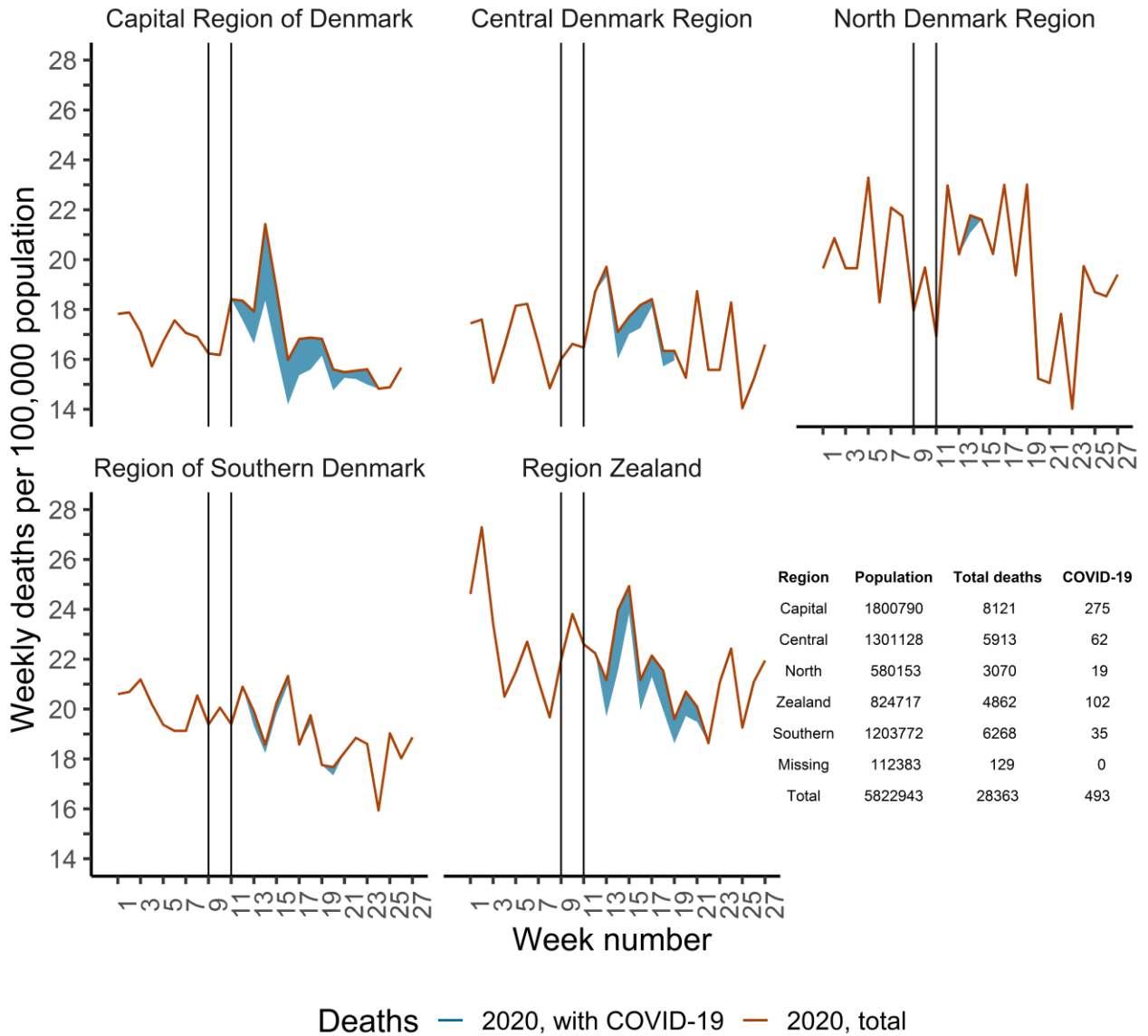


Supplementary figure 1 Timeline of events in Denmark. Week numbers placed on Mondays at the beginning of each week. Sources: <https://politi.dk/corona>, <https://www.ssi.dk/sygdomme-beredskab-og-forskning/sygdomsovervaagning/c/covid19-overvaagning>, <https://www.sst.dk/da/corona>, <https://www.altinget.dk/artikel.aspx?emne=6353>

Comorbidities at time of death:
ratio of all deaths



Supplementary figure 2 Ratio of comorbidities among individuals dead in 2020 to the total deaths in each week. Individuals may have more than one comorbidity.



Supplementary figure 3 Deaths in 2020 by the five Danish regions. The capital, Copenhagen, is in the Capital Region of Denmark. Region Zealand is on the same island as the Capital region. Week numbers according to the ISO 8601 standard. (i.e. week 1 starts on 30 December 2019). The blue shaded space represents deaths with COVID-19, only displayed for >3 deaths per week. Table lists the population distribution by region. The total deaths include all deaths in weeks 1-27 (inclusive of COVID-19 deaths), COVID-19 deaths are deaths within 30 days of diagnosis. Region codes based on municipality of residence from 2007-2019 were used.