

Supplemental Material

Table S1. Ablation protocol and termination. AF: Atrial Fibrillation; NSR: Normal Sinus Rhythm.

Patient #	Sources ablated	Termination	Termination at source	Ablation sequence						
				0	2	4	6	8	10	
# 1	3	YES	2nd	AF	*	NSR				
# 2	5	NO		AF						
# 3	6	NO		AF						
# 4	6	NO		AF						
# 5	2	NO		AF						
# 6	8	YES	1st	AF	*	NSR				
# 7	8	NO		AF						
# 8	1	NO		AF						
# 9	8	YES	4th	AF	*	NSR				
# 10	5	YES	3rd	AF	*	NSR				
# 11	6	YES	2nd	AF	*	NSR				
# 12	3	YES	2nd	AF	*	NSR				
# 13	5	NO		AF						
# 14	9	NO		AF						
# 15	2	NO		AF						
# 16	7	NO		AF						
# 17	2	YES	2nd	AF	*	←Termination				

Table S2. Cohort description: termination vs non-termination for the driver-guided ablation cohort.

	Patients with guided ablation	Termination	Non-termination	P value (Term. vs Non-term)
N	17	7	10	
Paroxysmal AF (%)	3 (18%)	1 (14%)	2 (20%)	0.76
Male (%)	14 (82%)	5 (71%)	9 (90%)	0.32
Age (years)	67 ± 9	67 ± 12	67 ± 8	0.91
AF history (months)	85 ± 70	88 ± 63	84 ± 78	0.90
Previous ablations	0.6 ± 1.0	1.3 ± 1.2	0.2 ± 0.4	0.02
Total number of basket drivers	9.2 ± 4.0	8.6 ± 2.8	9.6 ± 4.7	0.61
Drivers ablated	5.1 ± 2.5	5.0 ± 2.4	5.1 ± 2.7	0.93
Number of body surface drivers	8.2 ± 2.9	5.8 ± 3.1	9.8 ± 4.5	< 0.0001

Figure S1. A. Intracardiac 3D map of patient #1 after ablation (red dots) of 3 driver sites. B. Simultaneous body surface map. C. Surface and intracardiac signals during AF termination to sinus rhythm.

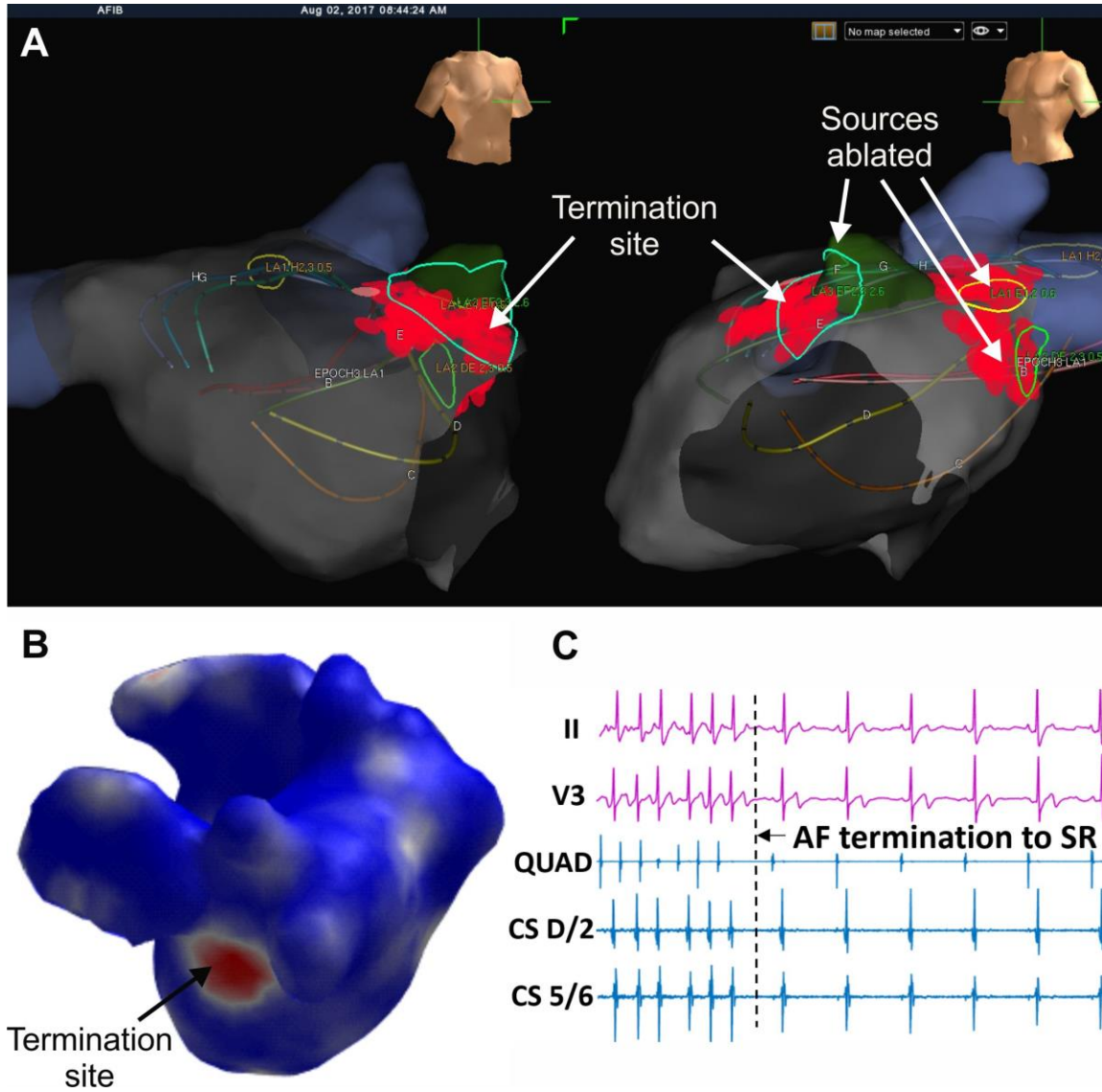


Figure S2. Number of reentrant sources in the Posterior Left Atrial Wall for Intracardiac (left) and body surface (right) analysis.

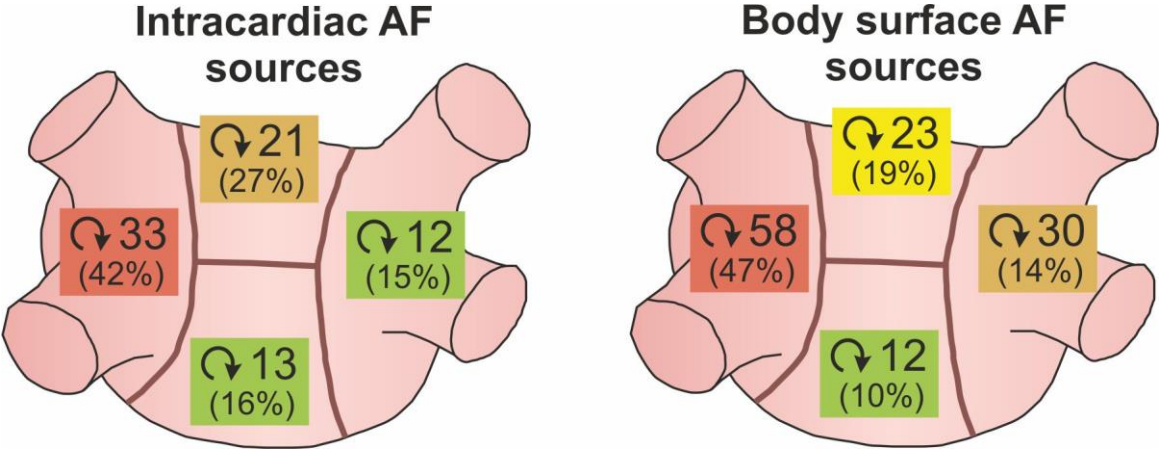


Figure S3. ROC curve when using the number of body surface drivers as predictor of acute termination.

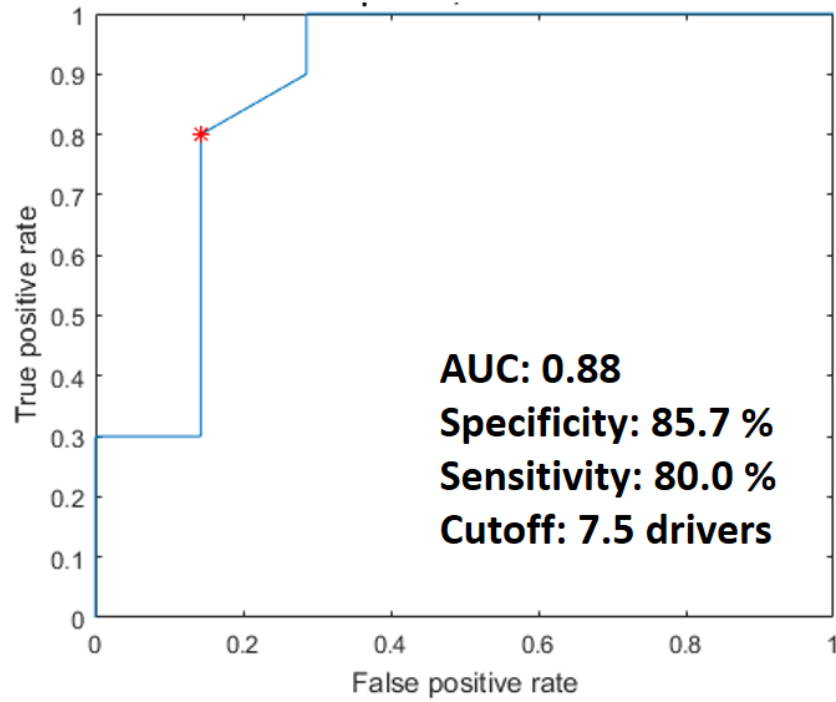


Figure S4. Coincidence between reentrant drivers identified by clinical system (Topera®) and the intracardiac phased-based method. A. Number of phase singularities. B. Percentage of total number of drivers. C. Percentage of time with detected drivers.

