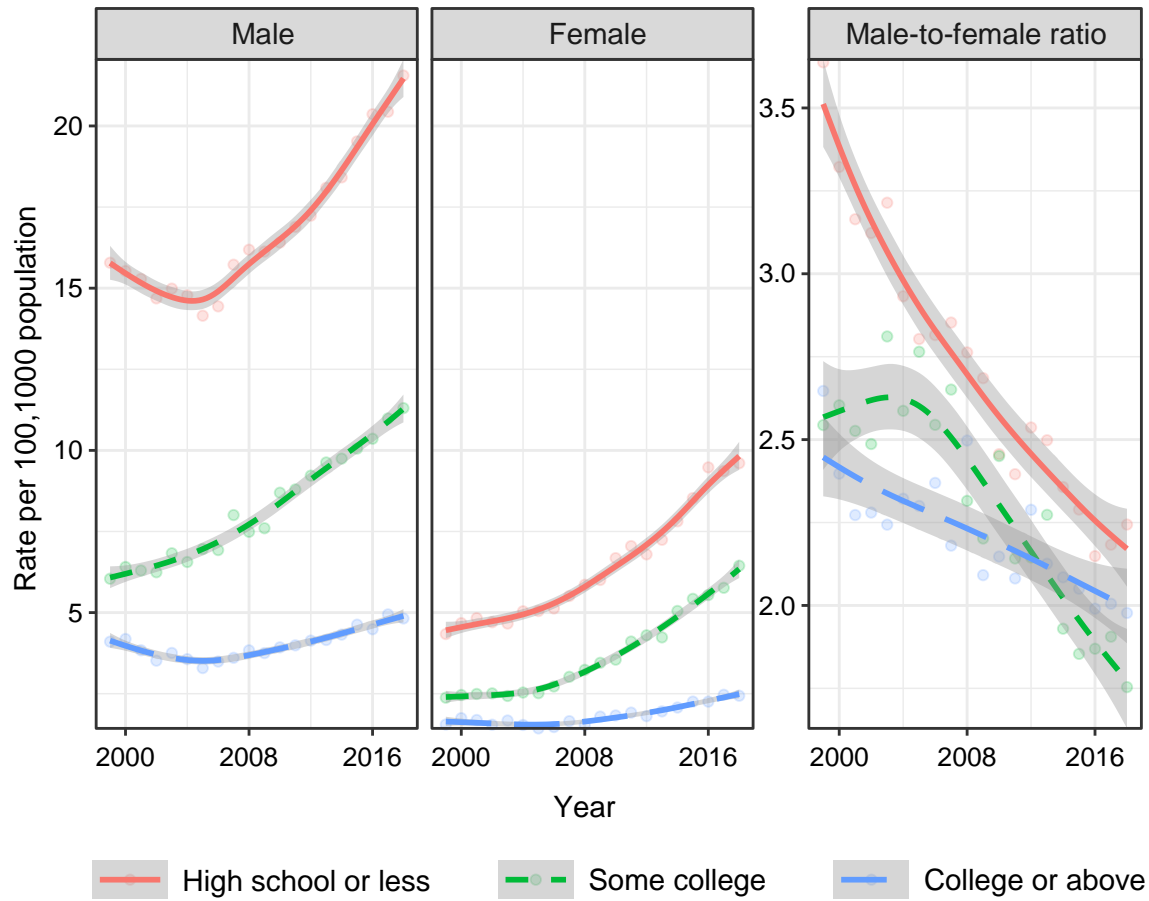


Appendix  
Trends in Premature Deaths From Alcoholic Liver Disease in the U.S., 1999–2018  
Yoon et al.

**Appendix Figure 1.** Age-adjusted death rates for alcoholic liver disease, by sex and educational attainment, U.S., 1999–2018.



Appendix  
Trends in Premature Deaths From Alcoholic Liver Disease in the U.S., 1999–2018  
Yoon et al.

Appendix Figure 2. Percentage of drug-induced causes among alcoholic liver disease deaths, by sex and race/Hispanic origin, U.S., 1999–2018.

