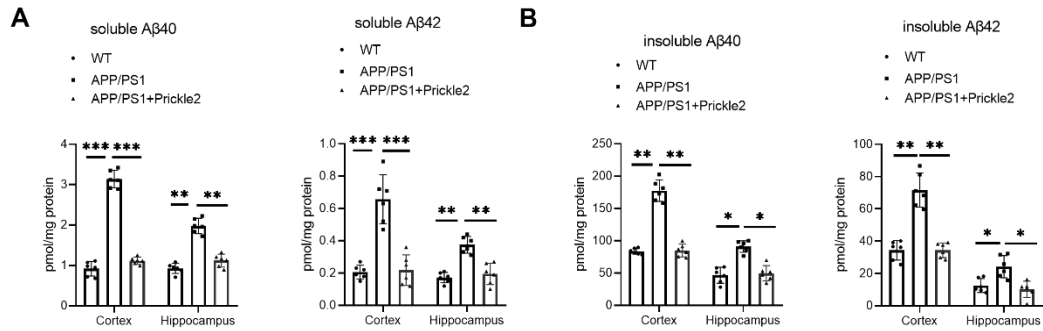


## Supplementary materials



**Fig. S1.** ELISA assay was performed to measure the soluble and insoluble A $\beta$ s. (A) Soluble A $\beta$ s and (B) Insoluble A $\beta$ s were detected using ELISA (n = 6 per group). ANOVA followed by Bonferroni's post hoc test. \*p < 0.05; \*\*p < 0.01; \*\*\*p < 0.001; \*\*\*\*p < 0.0001.