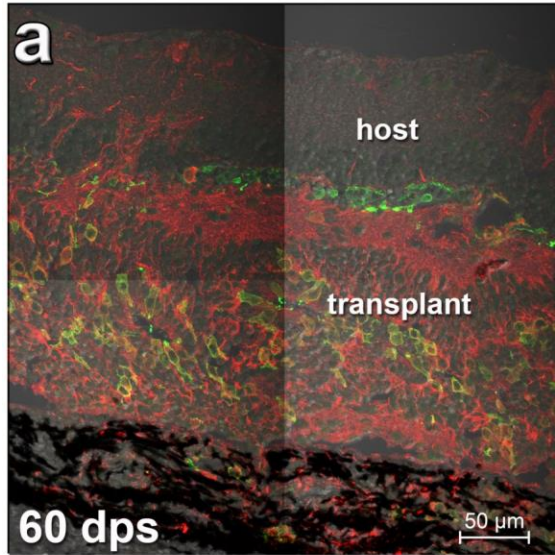
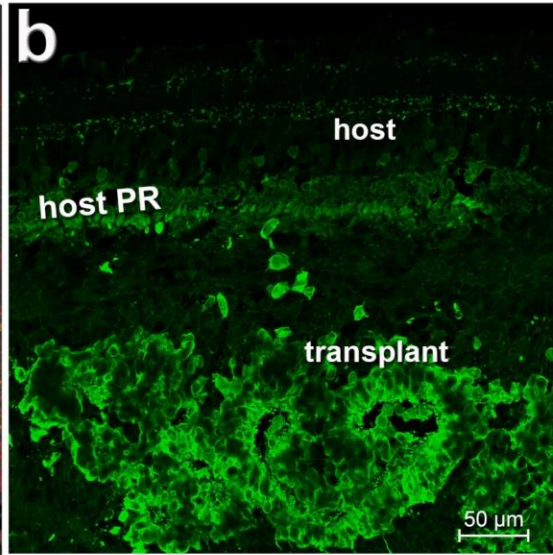


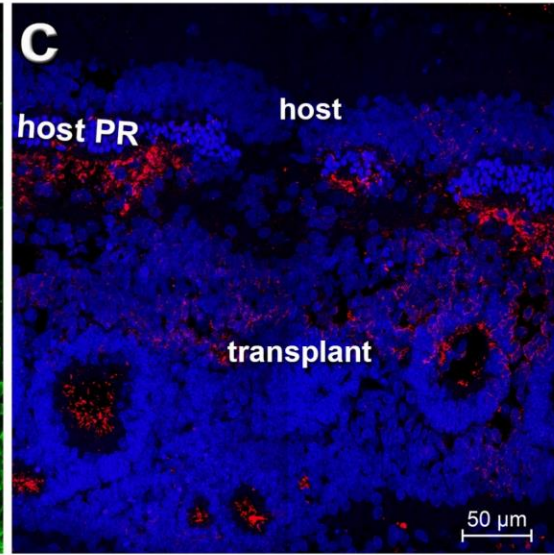
**RG opsin (cones)**  
**SC-121 (donor)**



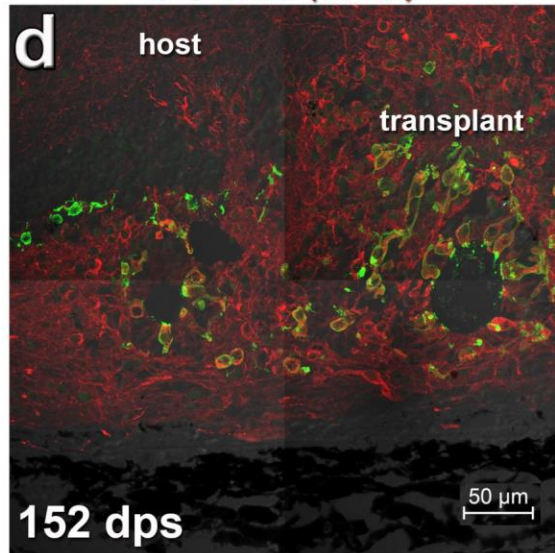
**Recoverin**  
(photoreceptors, cone bipolar cells)



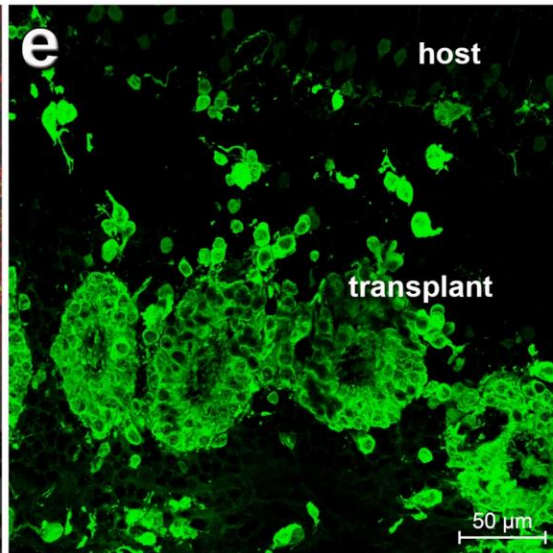
**Rhodopsin (rods)**  
**DAPI (nuclei)**



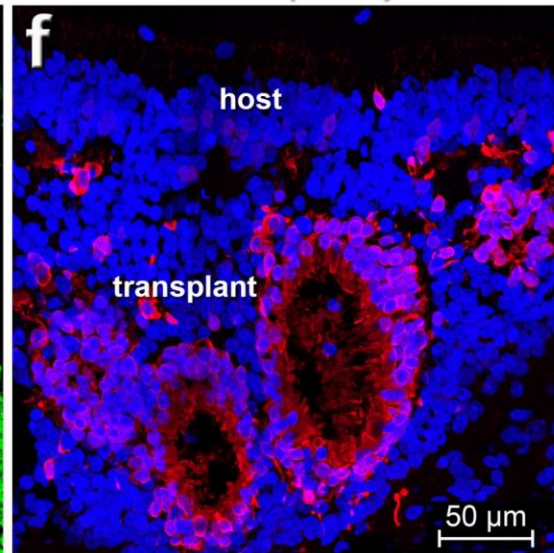
**RG opsin (cones)**  
**SC-121 (donor)**



**Recoverin**  
(photoreceptors, cone bipolar cells)



**Recoverin**  
**DAPI (nuclei)**



**Supplemental Figure S1 (refers to Figures 5 and 6): Photoreceptor markers in transplants 2-5 months post-surgery**

**(a-c)** Transplant 60d post-surgery (same transplant as in Fig. 4a,b). Note that there is still a thin host photoreceptor layer present. **(d-f)** Transplant 152d post-surgery (same transplant as in Fig. 4 c,d). Host photoreceptors have mostly disappeared. **(a,d)** Combination of SC-121 (red) with RG-opsin (green). **(b,e)** Recoverin (green). **(c,f)** Rhodopsin (red), DAPI (blue, nuclei). Scale bars = 50 $\mu$ m.