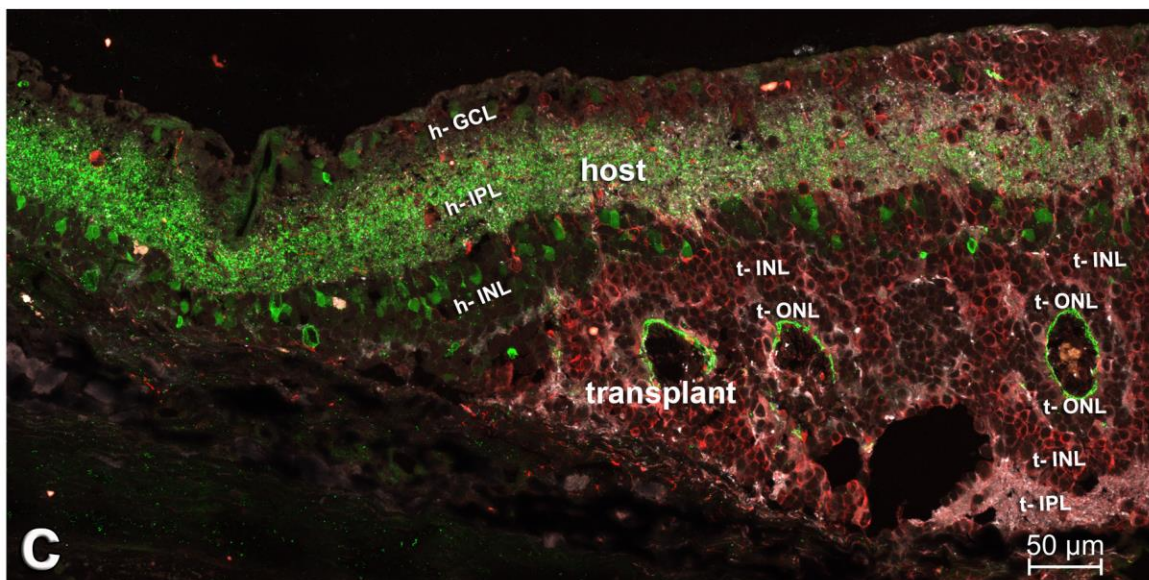
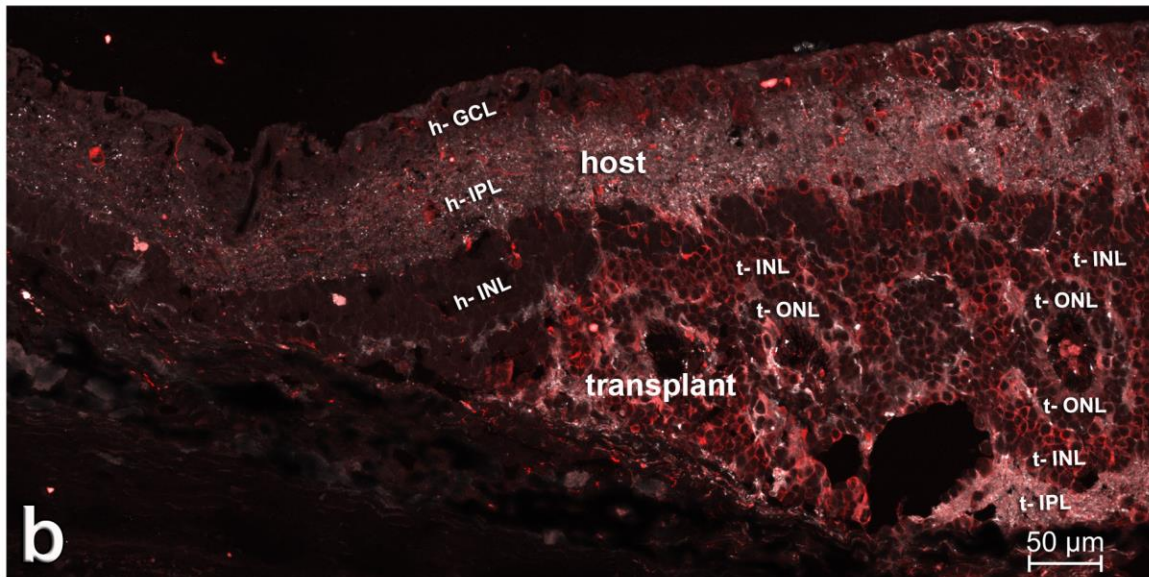
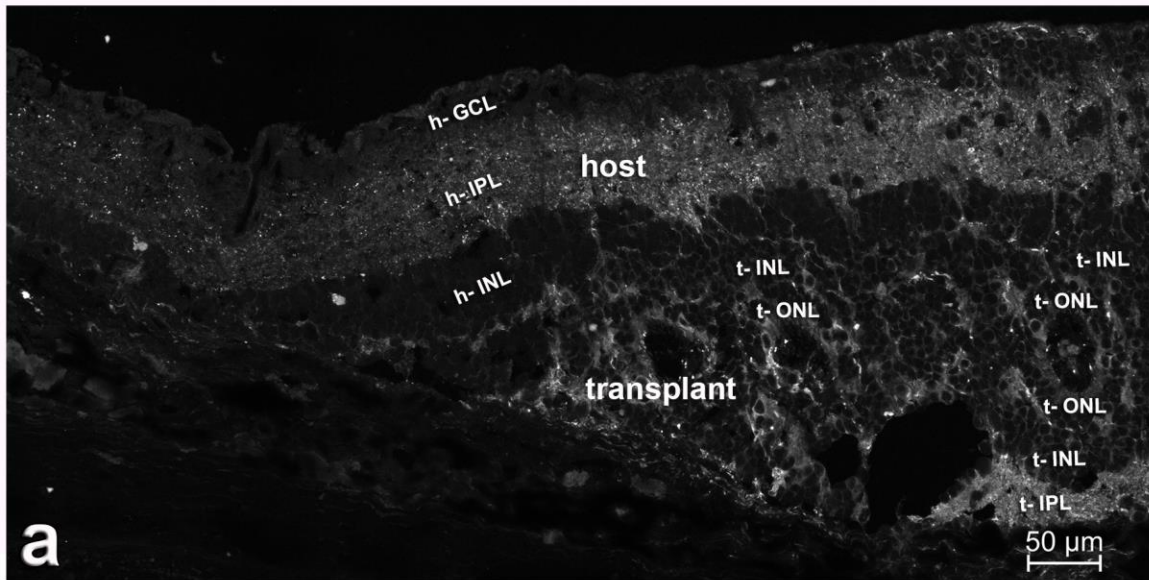


SC121 (*human*) Synaptophysin α -synuclein (*rat host IPL+AC*)



Supplemental Figure S3 (refers to Figure 7): Synaptophysin in host over transplant versus outside

Combination of synaptophysin (white), the human cytoplasmic marker SC-121 (red), and rodent-specific α -synuclein (green). Confocal images of transplant #12 (see Table 3). **(a)** Synaptophysin alone. **(b)** Synaptophysin and SC-121. **(c)** Synaptophysin, SC-121 and rodent-specific α -synuclein. Note that synaptophysin immunoreactivity in the host IPL is much stronger over the transplant than outside. Scale bars = 50 μ m.