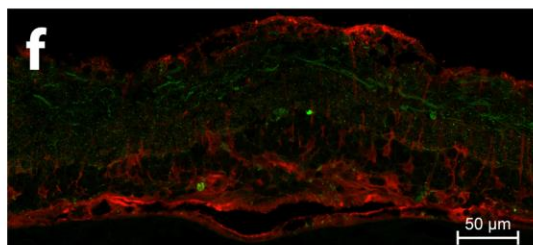
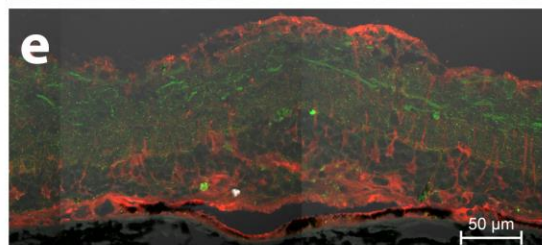
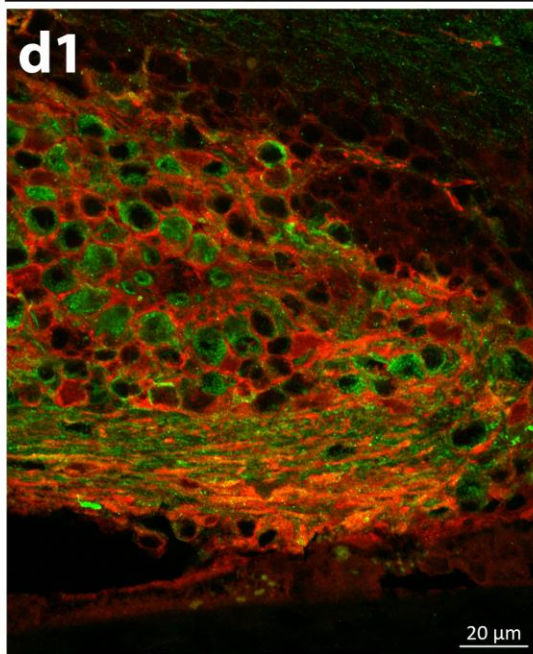
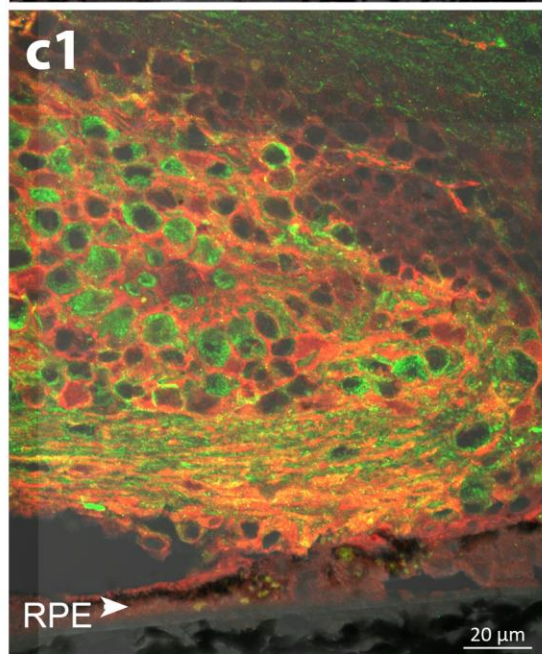
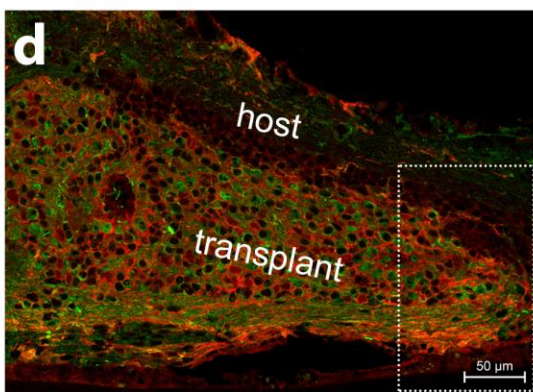
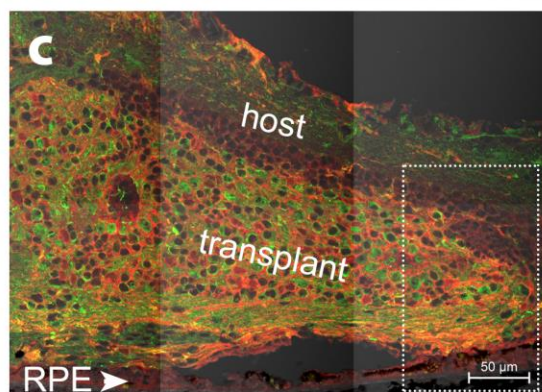
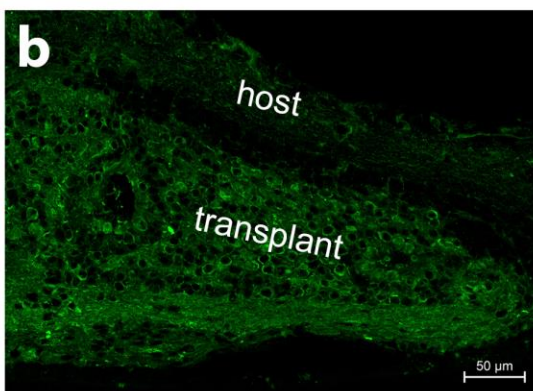
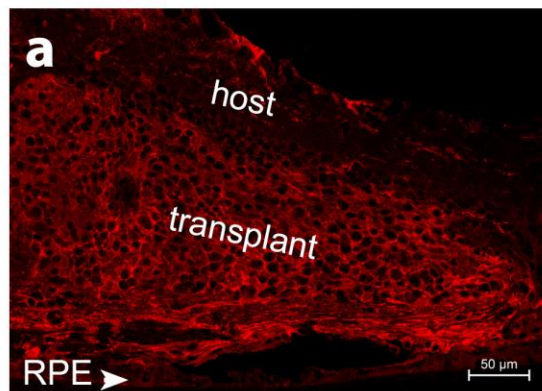


CRALBP/RLBP1
(Müller cells, RPE)

SC121
(human cytoplasm)



Supplemental Figure S4 (refers to Figure 9): Müller and RPE-specific marker CRALBP (RLBP1) in combination with human cytoplasm marker SC121. Confocal images of Transplant #5. **a)** RLBP1 (single channel, red). The transplant shows much stronger immunoreactivity for this RLBP1 antibody than the host retina. Host RPE at the bottom of the picture are only faintly stained. **b)** SC121 (single channel, green). **c)** Both channels and bright field. Box shows enlargement in c1. **d)** Both channels without bright field. Box shows enlargement in d1. **e,f)** host retina outside transplant shows SC-121 immunoreactive processes in inner plexiform layer. Host RPE show stronger RLBP1 immunoreactivity than under transplant.