

433 **SUPPLEMENTARY FIGURE LEGENDS**

434 **Supplementary Figure 1:** Alpha diversity metrics in patients stratified according to IBD
435 phenotype. SF1A: Chao1 alpha diversity in sigmoid samples of patients with CD), UC/IBD-U
436 and healthy controls. * represents CD vs HC, $p = .04$, ^ represents UC/IBD-U vs CD, $p = .02$ and
437 > represents UC/IBD-U vs HC, $p < .0001$. SF1B: Chao1 alpha diversity in terminal ileum
438 samples. * $p = .03$ CD vs. UC/IBD-U, + $p = 0.001$ CD vs. UC/IBD-U.

439

440 **Supplementary Figure 2:** Beta diversity of sigmoid colon biopsies in healthy controls, CD and
441 UC/IBD-U. SF2A: Bray-Curtis beta diversity analysis indicating population dissimilarity
442 between HC (n=48), UC/IBD-U (n=37), and CD (n=26). * represents CD vs HC, $p < 0.001$ and
443 CD vs UC/IBD-U, $p < 0.001$. SF2B: Bray-Curtis dissimilarity between patients with Crohn's
444 disease activity index (CDAI) > 150 , (n=17) compared with CDAI < 150 (n=41). * represents
445 $p = 0.01$, $r = 0.24$.

446

447 **Supplementary Figure 3:** Microbial Dysbiosis index (MD-index) scores of the mucosa-
448 associated microbiome calculated in terminal ileum and sigmoid colon samples and compared in
449 patients with UC/IBD-U, CD and healthy controls (HC). SF3A: All patients with available
450 samples from the sigmoid colon (HC vs CD $p = 0.04$, UC vs CD $p = 0.01$) and terminal ileum (HC
451 vs CD $p = .02$, UC vs CD $p = .004$). SF3B: Data represent patients with inflammation (Mayo
452 score > 1 in UC, n=48 and SES-CD > 5 in CD, n=50). MD-Index scores were calculated from
453 tissue-associated microbiome of inflamed sigmoid colon samples (HC vs CD $p = 0.01$, UC vs CD

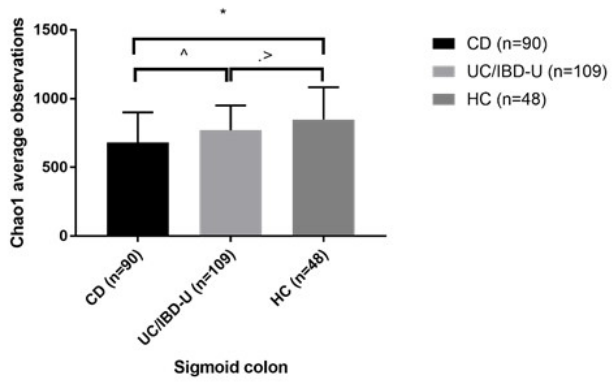
454 p=0.03) and terminal ileum (HC vs CD p=0.01, UC vs CD p=0.02) * represents statistical
455 differences, (p<0.05) across groups

456

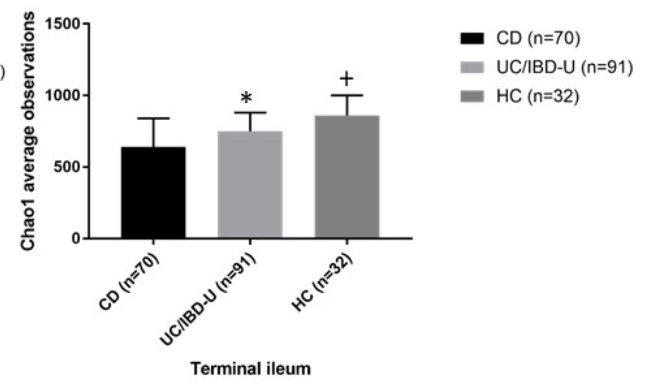
457 **Supplementary Figure 4:** Comparison of Chao1 diversity and Microbial Dysbiosis Index (MD-
458 Index) according to severity of endoscopic inflammation. **SF4A:** Chao1 index of species
459 richness at sigmoid and terminal ileum biopsy sites in CD patients with data representing four
460 groups categorized by severity of inflammation at that biopsy segment (0=normal, 1=mild,
461 2=moderate, 3=severe). Chao1 metrics were analyzed with individual comparisons between
462 groups with no statistical significance, $0.89 < p < 1$. There was no correlation between MD-index
463 and severity at biopsy site ($p=0.24$, $\rho=0.12$). **SF4B:** Chao1 diversity index at the sigmoid colon
464 in ulcerative colitis, categorizing patients according to Mayo scores. Chao1 metrics were
465 compared between groups with no statistical significance, $0.5 < p < 1$. There was no correlation
466 between MD-index and severity ($p=0.06$, $\rho=0.2$).

467

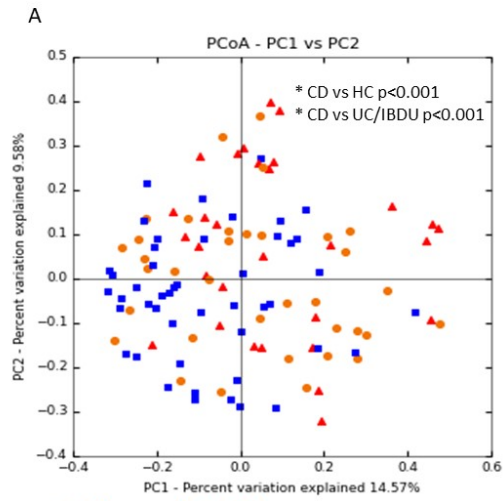
A



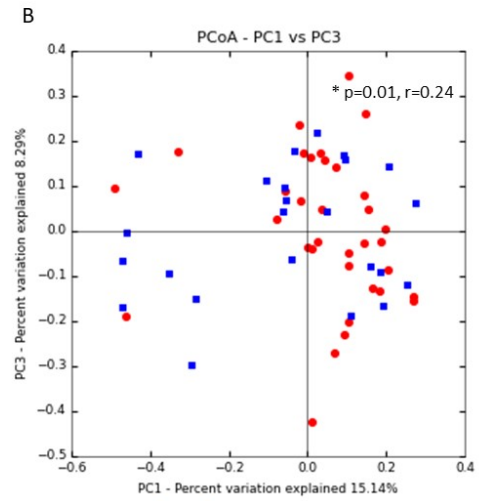
B



Journal



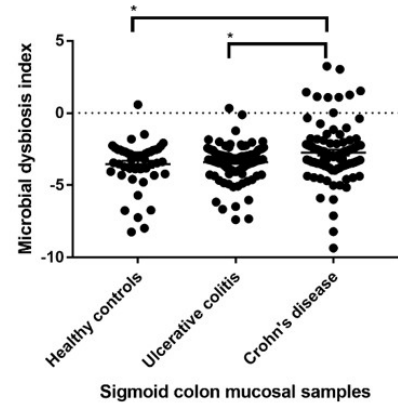
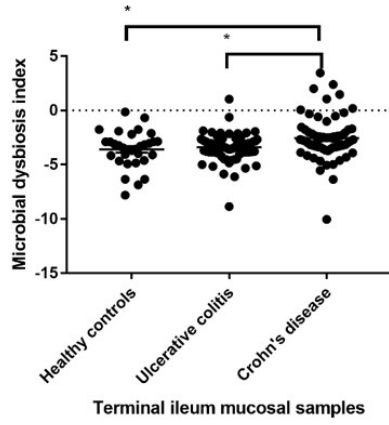
Healthy controls (n=48)
Ulcerative colitis/IBD-unclassified (n=37)
Crohn's Disease (n=26)



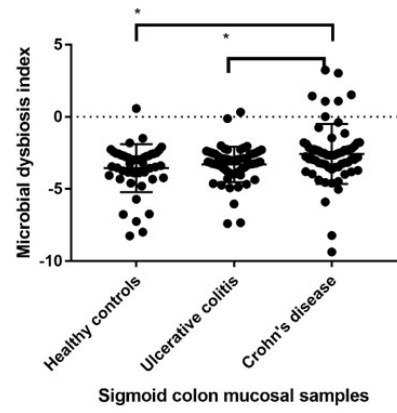
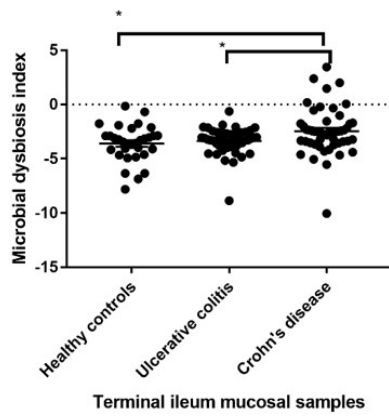
CDAI > 150, (n=17)
CDAI < 150, (n=41)

Journal Pre

A



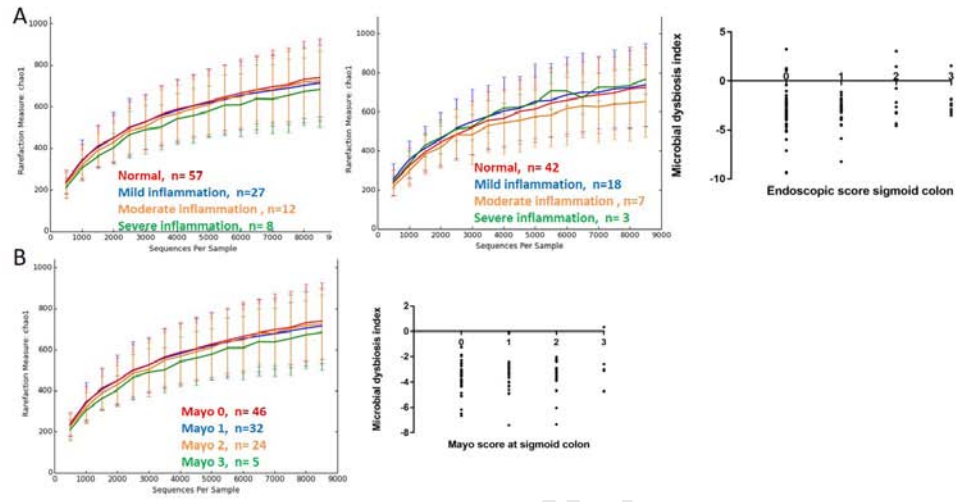
B



Journal

Sigmoid colon mucosa

Terminal ileum mucosa



Journal Pre-proof