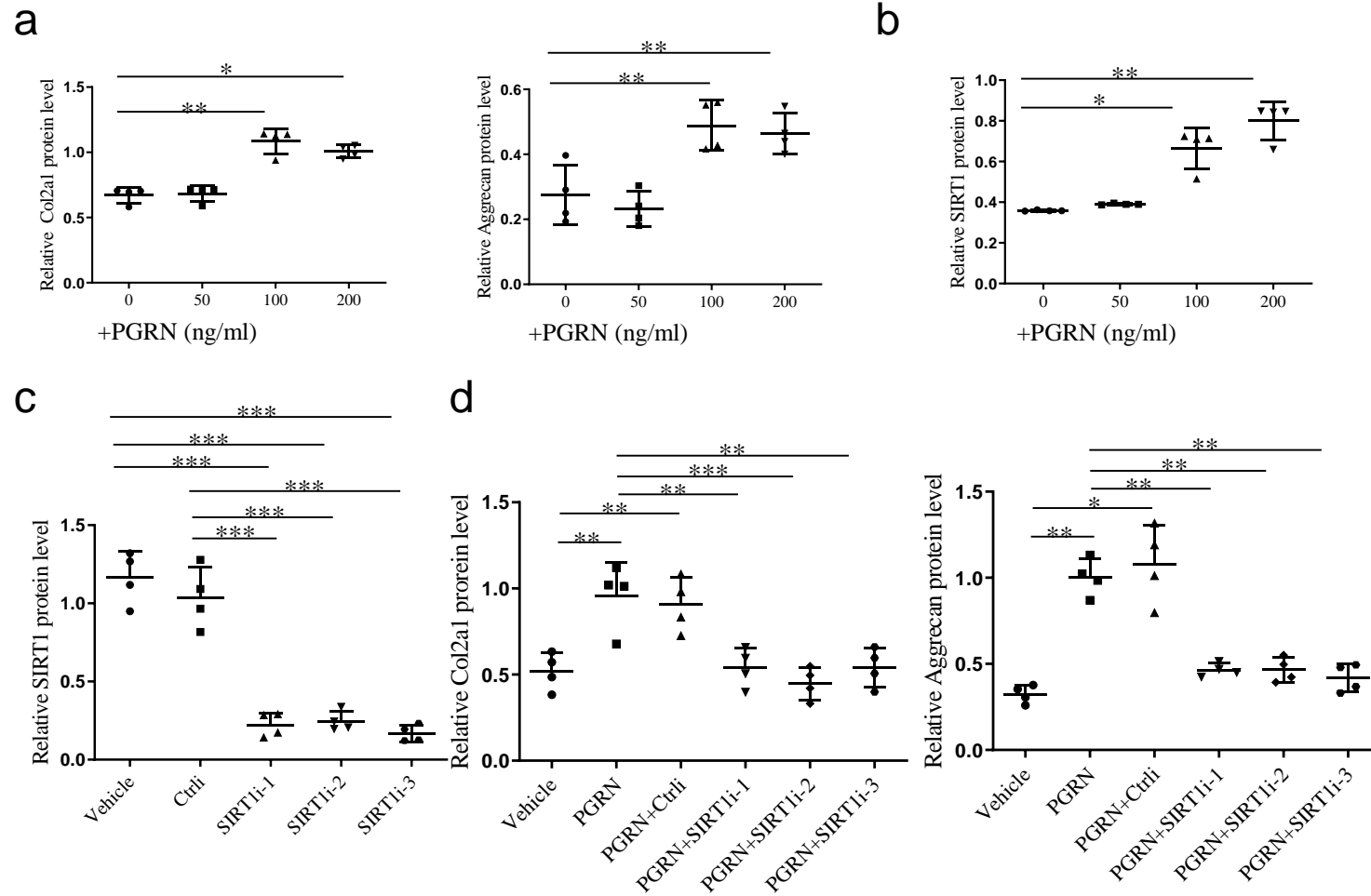
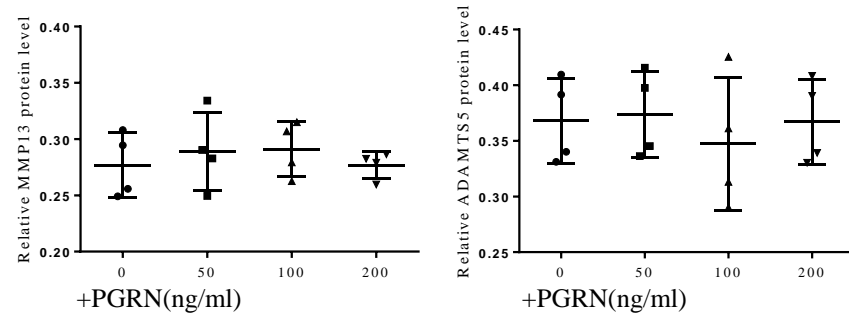
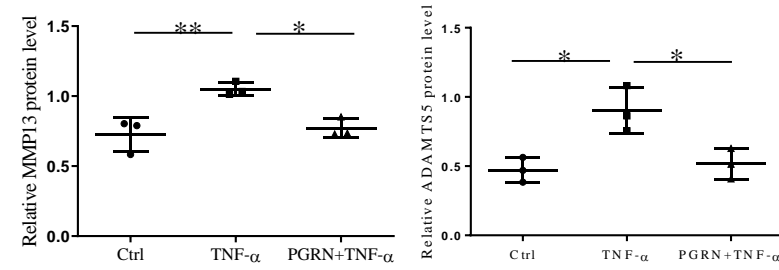
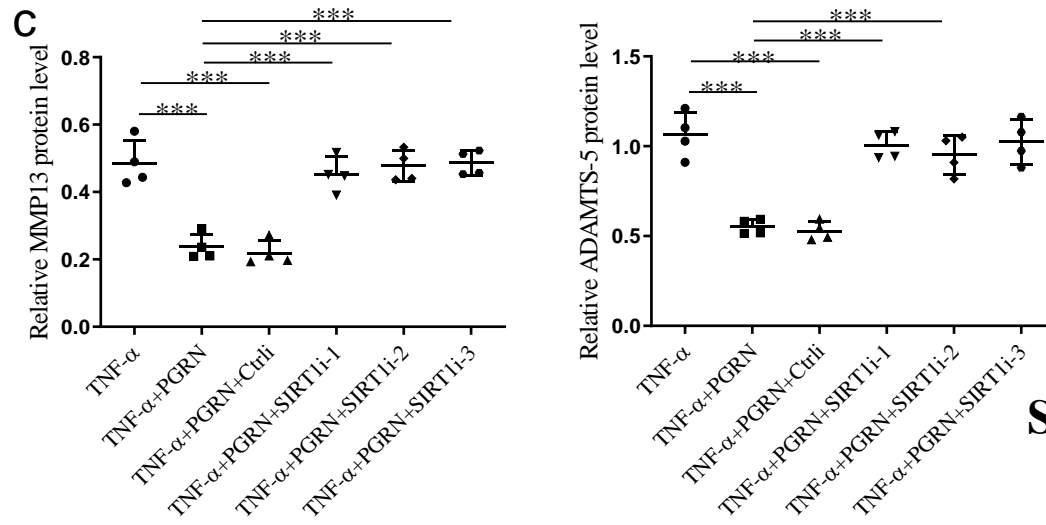


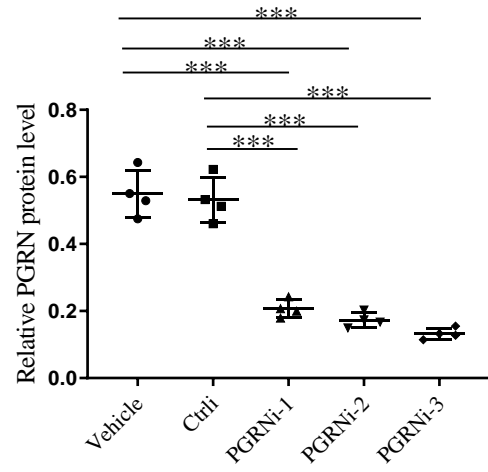
Supplemental figure 1



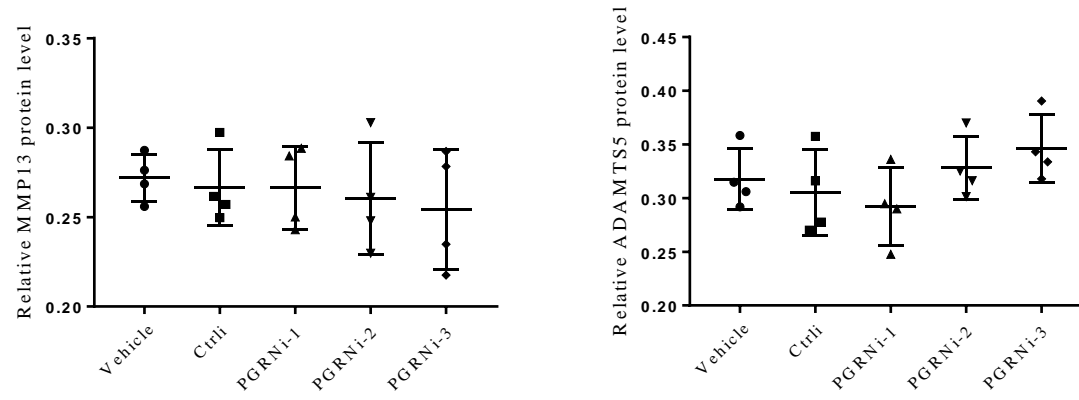
Supplemental figure 2

a**b****c****Supplemental figure 3**

a



b



Supplemental figure 4

Progranulin modulates cartilage-specific gene expression via SIRT1-mediated deacetylation of Sox9 and p65

Dongxu Feng, Xiaomin Kang, Ruiqi Wang, He Chen, Kun Zhang, Weilou Feng, Huixia Li, Yangjun Zhu and Shufang Wu

SUPPLEMENTAL FIGURE LEGENDS

Supplemental Figure 1 EphA2 expression in human articular cartilage and chondrocytes treated with PGRN.

A, Immunohistochemistry and statistical analyses of EphA2 expression in articular cartilage from normal humans and OA patients (n=6/group). Scale bar, 50 μ m. One-way ANOVA and Tukey's multiple comparison test. *B*, Chondrocytes were cultured in the presence of graded concentrations of recombinant PGRN(0-200ng/ml) for 48 h. EphA2 mRNA level was examined by real-time PCR. One-way ANOVA and Dunnett's multiple comparison test.

Supplemental Figure 2

A-D, Quantification of figure 2E, 2F, 2I and 2O were shown on panel A-D, respectively. Data are expressed as means \pm S.D. in each scatter plot. * P <0.05, ** P <0.01, *** P <0.001. A-B One-way ANOVA and Dunnett's multiple comparison test. C-D, One-way ANOVA and Tukey's multiple comparison test.

Supplemental Figure 3

A-C, Quantification of figure 4A, 4F, 4H were shown on panel A-C, respectively. Data are expressed as means \pm S.D. in each scatter plot. * P <0.05, ** P <0.01, *** P <0.001. One-way ANOVA and Tukey's multiple comparison test.

Supplemental Figure 4

A-B, Quantification of figure 6A and 6H were shown on panel A-B, respectively. Data are expressed as means \pm S.D. in each scatter plot. * P <0.05, ** P <0.01, *** P <0.001. One-way ANOVA and Tukey's multiple comparison test.