

Supplementary Online Content

Parikh RB, Robinson KW, Chhatre S, et al. Comparison by race of conservative management for low-risk and intermediate-risk prostate cancers in veterans from 2004 to 2018. *JAMA Network Open*. 2020;3(9):e2018318. doi:10.1001/jamanetworkopen.2020.18318

eFigure 1. Cohort Selection

eFigure 2. Observed Trends in Receipt of Conservative Management Among Veterans With Localized Prostate Cancer

eFigure 3. Sensitivity Analysis of Time to Receipt of Definitive Therapy

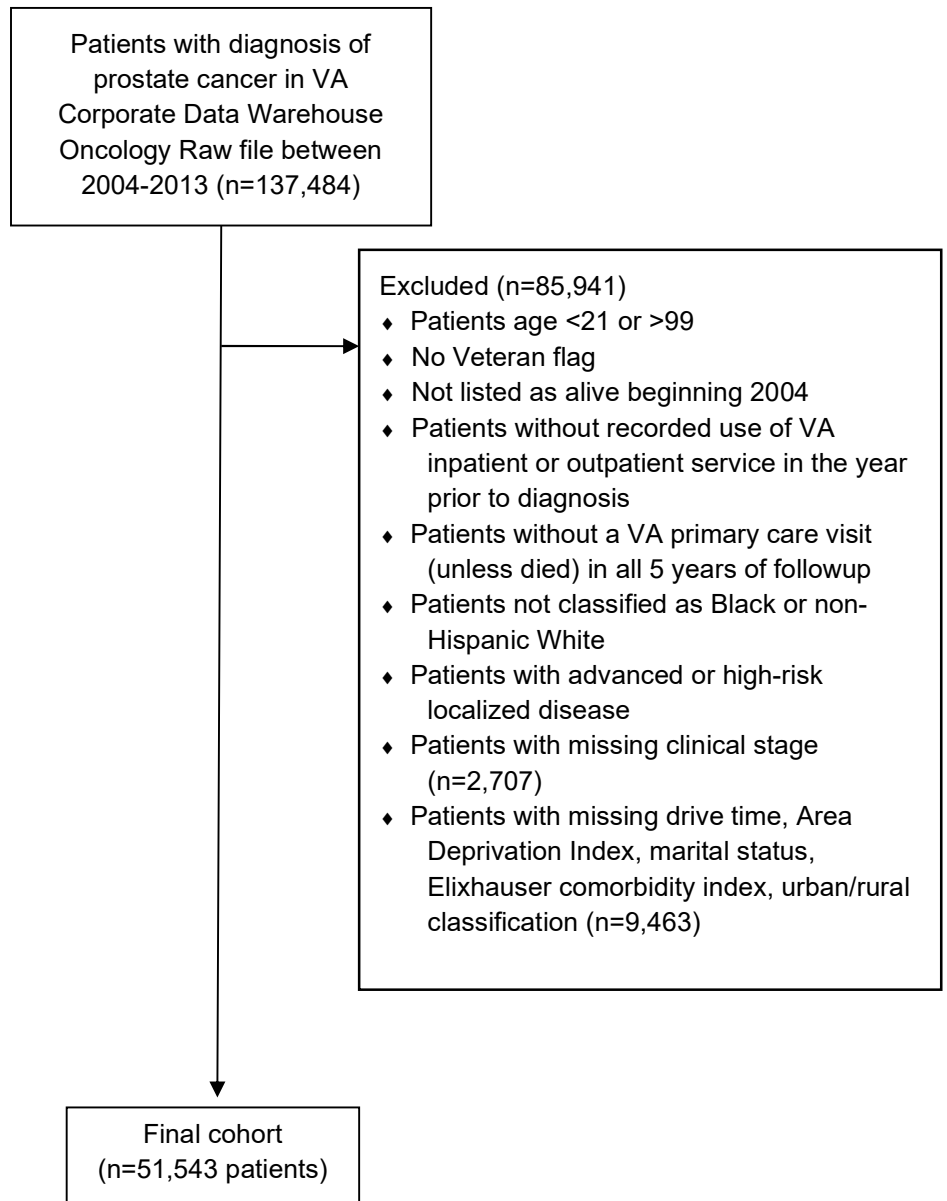
eTable 1. Code List

eTable 2. Initial Management Strategy Over Time

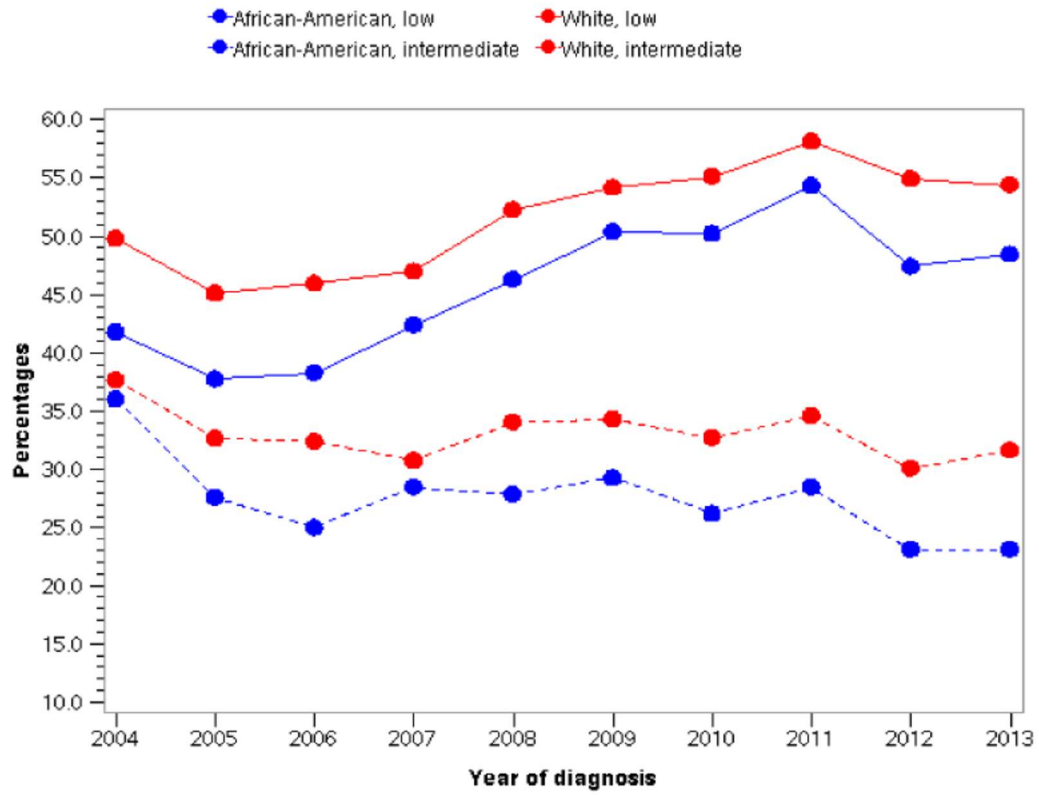
eTable 3. Univariable Log-Binomial Associations of Likelihood of Receipt of Conservative Management Across Patients With Low-Risk and Intermediate-Risk

This supplementary material has been provided by the authors to give readers additional information about their work.

eFigure 1. Cohort Selection

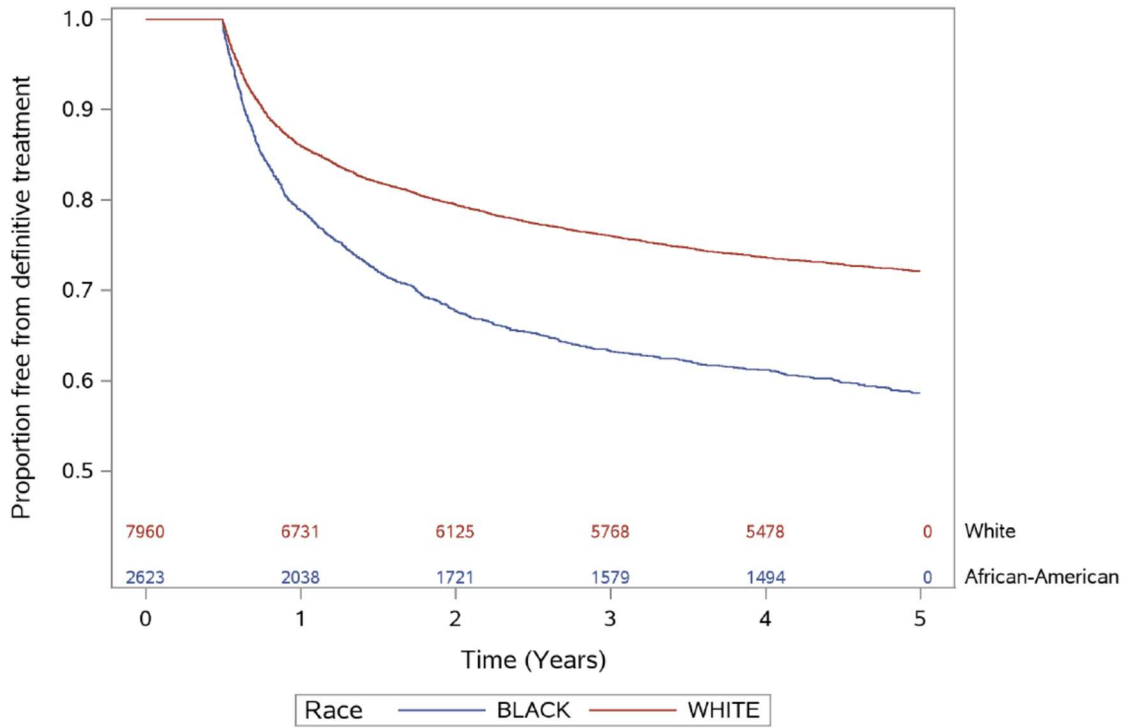


eFigure 2. Observed Trends in Receipt of Conservative Management Among Veterans With Localized Prostate Cancer

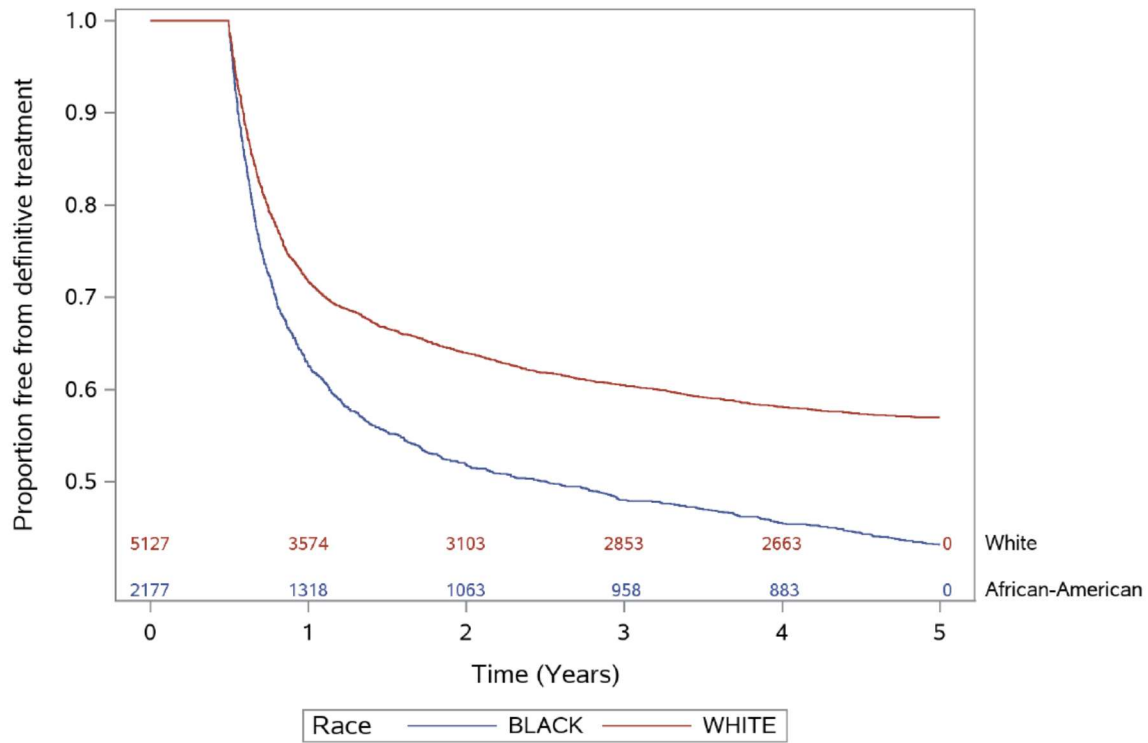


eFigure 3. Sensitivity Analysis of Time to Receipt of Definitive Therapy

eFigure 3A. Kaplan Meier curve of time to receipt of definitive therapy among African-American and White Veterans with low-risk localized prostate cancer who receive conservative management, 2004-2018, Sensitivity analysis



eFigure 3B. Kaplan Meier curve of time to receipt of definitive therapy among African-American and White Veterans with intermediate-risk localized prostate cancer who receive conservative management, 2004-2018, Sensitivity analysis



eTable 1. Code List

Variable	ICD-9 diagnosis/procedure code	CPT	HCPCS codes
Prostatectomy	60.5	55810-55815, 55821, 55831, 55840-55845, 55866	
Radiation	V58, V66.1, V67.1; 92.2-92.29	55869-55876, 77261-77431, 77499, 77522, 77720-77799	C1164-C11674, C1325, C1350, C1700-1806, C23632-C2643, G0174, G0256, G0261
Hormone Therapy	V07.59; 62.4x	54520, 54522, 54530, 54690	C9216, C9430, G03056, G9132, J0128, J1050, J1051, J1675, J1950, J3315, J9155, J9165, J9202, J9217- J9219, J9225- J9226, S0133, S0165, S0175, S9560

eTable 2. Initial Management Strategy Over Time

Intermediate risk (n = 27514)						
	African-American (n = 8526)			White (n = 18988)		
	Conservative management	Surgery	Radiation	Conservative management	Surgery	Radiation
2004-2007	721 (28.7%)	560 (22.3%)	993 (39.6%)	2073 (33.0%)	1375 (21.9%)	2220 (35.2%)
2008-2011	1046 (28.0%)	910 (24.3%)	1535 (41.0%)	2817 (33.9%)	1899 (22.9%)	3046 (36.7%)
2012-2013	525 (23.1%)	546 (24.0%)	1104 (48.5%)	1355 (30.1%)	1032 (23.5%)	1805 (41.1%)
Low risk (n = 24029)						
	African-American (n = 6304)			White (n = 17725)		
	Conservative management	Surgery	Radiation	Conservative management	Surgery	Radiation
2004-2007	923 (40.1%)	330 (14.3%)	946 (41.1%)	3228 (46.9%)	946 (13.7%)	2428 (35.3%)
2008-2011	1304 (50.3%)	297 (11.5%)	931 (35.9%)	4065 (54.9%)	829 (11.2%)	2346 (31.7%)
2012-2013	675 (47.9%)	118 (8.4%)	592 (42.0%)	1874 (54.7%)	298 (8.7%)	1216 (35.5%)

eTable 3. Univariable Log-Binomial Associations of Likelihood of Receipt of Conservative Management Across Patients With Low-Risk and Intermediate-Risk

Characteristic	RR (95% CI)	p-value
Age at diagnosis	1.015 (1.014-1.017)	<0.001
Absolute PSA	0.982 (0.980-0.986)	<0.001
Area Deprivation Index	0.999 (0.998-0.999)	<0.001
Driving time	1.011 (1.009-1.014)	<0.001
Elixhauser comorbidity index (ordinal)	1.249 (1.164-1.340)	<0.001
Urban/rural	1.063 (1.041-1.086)	<0.001
Race		
African-American	0.834 (0.814-0.855)	<0.001
White	1.0 [ref]	
Marital status		
Married	1.083 (1.060 -1.106)	<0.001
Single/Divorced	1.0 [ref]	