

## Additional results

### **Kinematic parameters obtained with the ArmeoSpring for upper-limb assessment after stroke: a reliability and learning effect study for guiding parameter use**

Nabila Brihmat<sup>a</sup>, Isabelle Loubinoux<sup>a</sup>, Evelyne Castel-Lacanal<sup>a,b</sup>, Philippe Marque<sup>a,b</sup>, David Gasq<sup>a,c</sup>

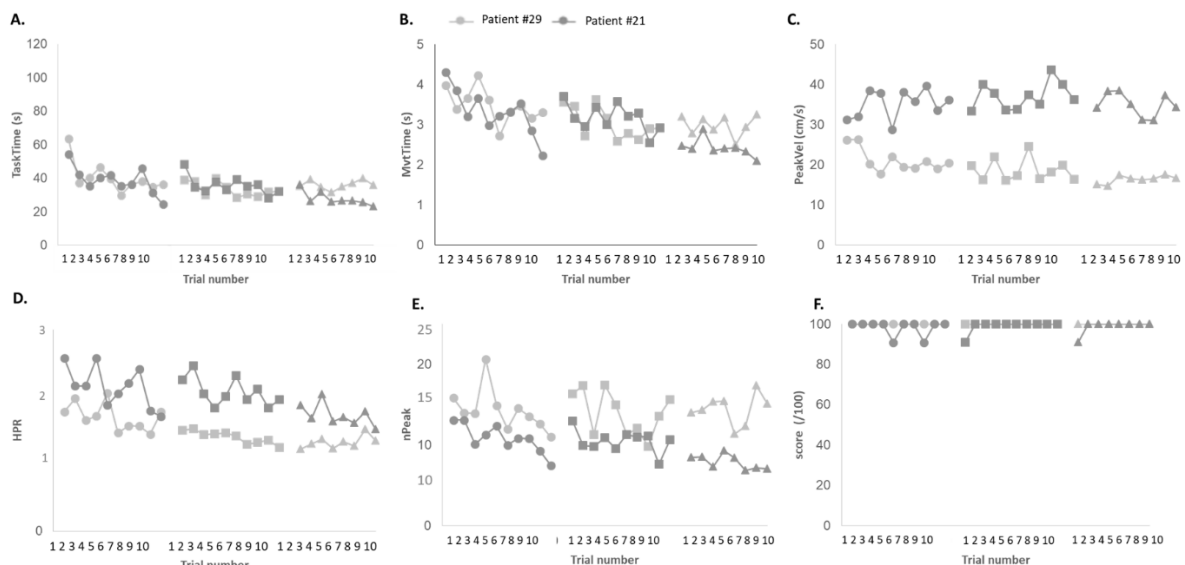
<sup>a</sup> ToNIC, Toulouse NeuroImaging Center, University of Toulouse, Inserm, UPS, France.

<sup>b</sup> University Hospital of Toulouse, Department of Physical and Rehabilitation Medicine, Toulouse, France.

<sup>c</sup> University Hospital of Toulouse, Department of Physiological Explorations, Toulouse, France

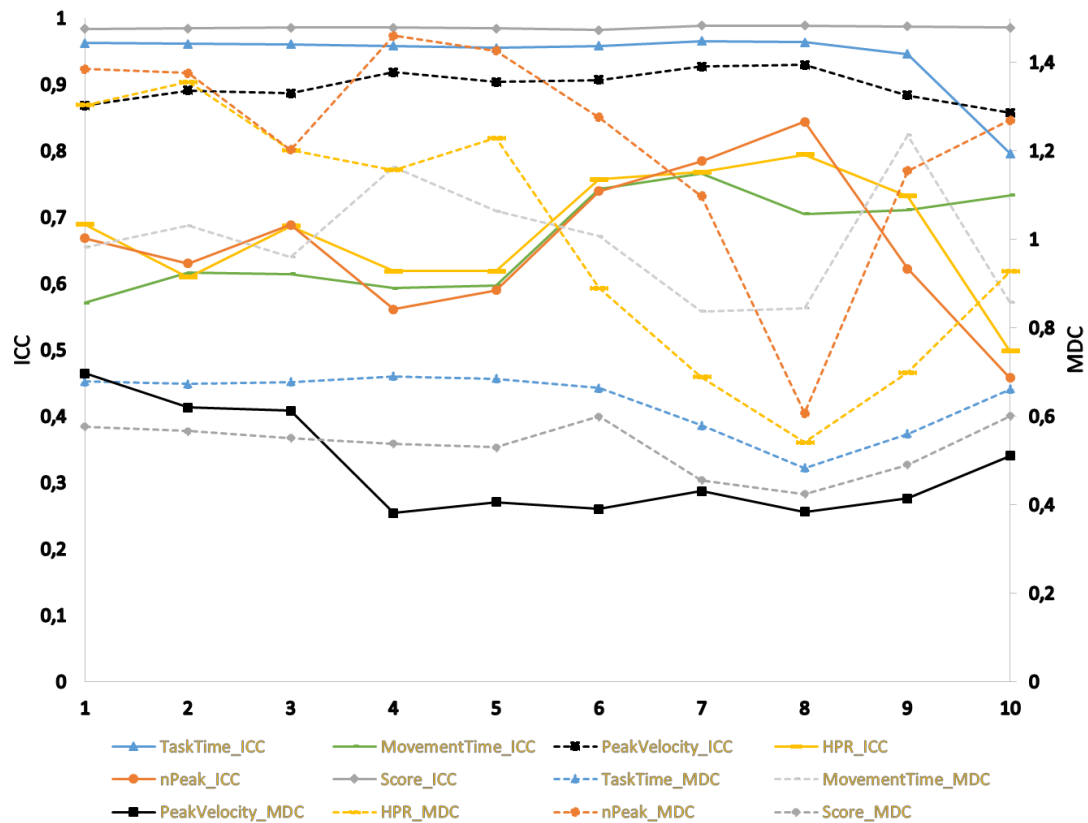
### **Additional figure S4.**

Learning curves of two example patients' data (#21 and #29) showing the evolution of a specific parameter over the trials (1 to 10) for the 3 sessions. **A.** Task time (TaskTime, s). **B.** Movement time (MovementTime, s). **C.** Peak velocity (PeakVel, cm/s). **D.** Hand path ratio (HPR, dimensionless). **E.** Number of peak velocity (nPeak). **F.** Game score (Score, %).



### Additional figure S5.

Evolutions of Minimal Detectable Change (MDC, dashed lines) and Intraclass Correlation Coefficient (ICC, solid lines) according to the number of trials (of sessions 2 and 3), considering the calculation of reliability (1: only the 10<sup>th</sup> trial, to 10: the 10<sup>th</sup> to the 1<sup>st</sup> trial). Different parameters are represented by different colors and shapes (black (■): peak velocity, grey (◆): score, orange (●): number of peaks, blue (▲): task time, green (-): movement time, yellow (—): HPR).



**Additional figure S6.**

Learning curves of the averaged time of occurrence of the peak velocity during the movement expressed in percentage (*PercPeakVel* in %  $\pm$ SD), showing the evolution of this parameter over the trials (1 to 10) of the 3 sessions. Between-session significance is represented with asterisks (\*  $p < 0.05$ ). No significant trial effect was observed.

