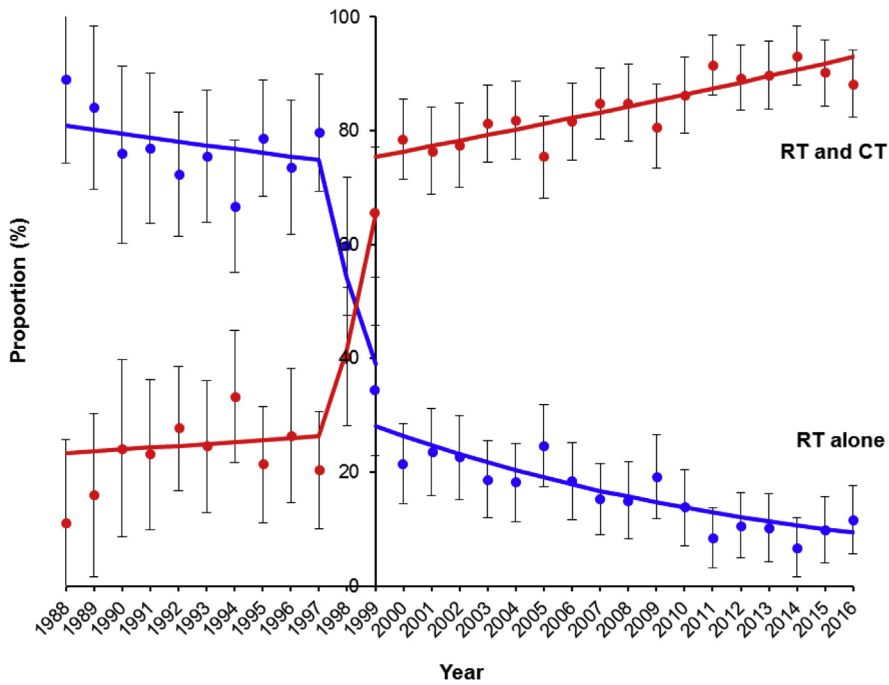


SUPPLEMENTAL FIGURE S1
Interrupted time-series for postoperative radiotherapy pattern

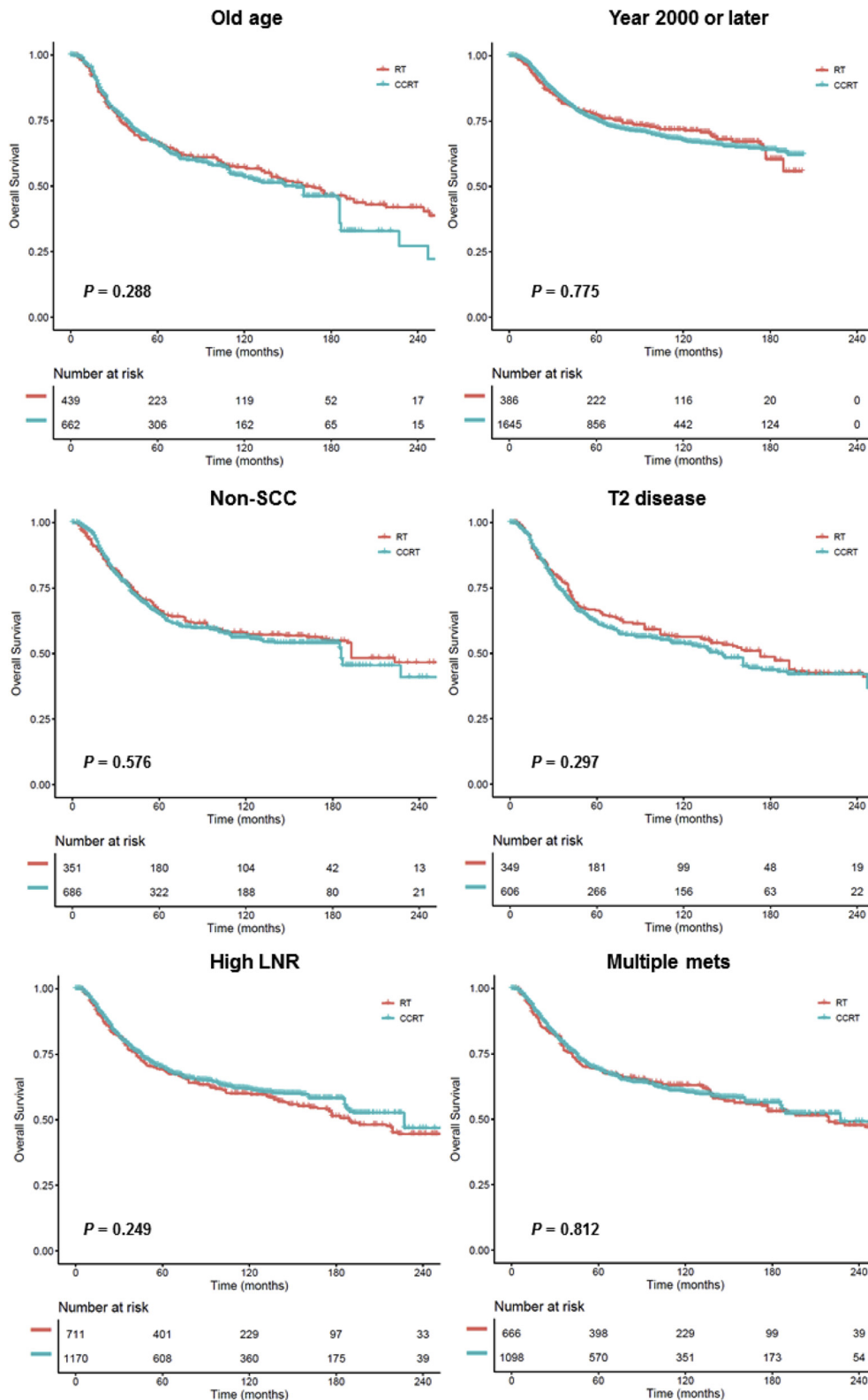


Dots represent observed value with 95%CI. Bars represent modeled value.

Abbreviations: RT and CT, concurrent chemo-radiotherapy; and RT alone, radiotherapy alone.

Matsuo et al. CCRT vs RT for node-positive early-stage cervical cancer. *Am J Obstet Gynecol* 2020.

SUPPLEMENTAL FIGURE S2
Subgroup analysis (PS-IPTW model)

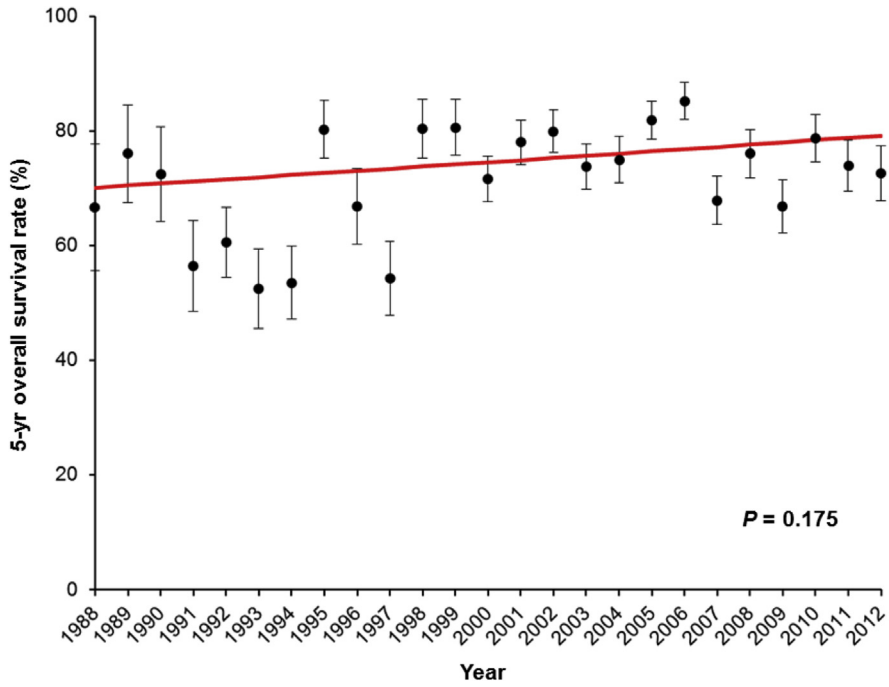


Cox proportional hazard regression model for *P*-value.

Abbreviations: RT, radiotherapy alone; and CCRT, concurrent chemo-radiotherapy

Matsuo et al. CCRT vs RT for node-positive early-stage cervical cancer. *Am J Obstet Gynecol* 2020.

SUPPLEMENTAL FIGURE S3
Population level outcome for 5-year overall survival rate



Dots represent observed value with 95%CI. Bars represent modeled value.

Matsuo et al. CCRT vs RT for node-positive early-stage cervical cancer. Am J Obstet Gynecol 2020.