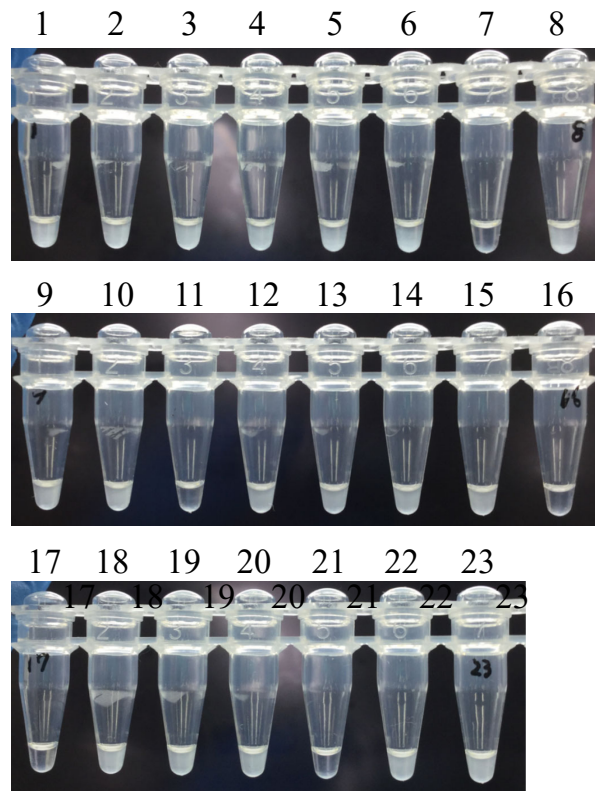
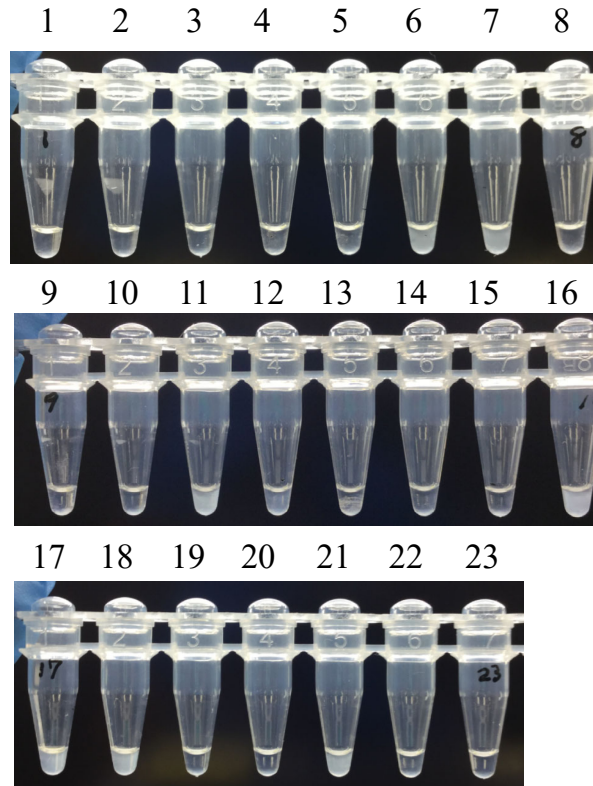


**Figure S4** Blind test trial for (A) PNA-LAMP<sub>ms1-1\_wt</sub>, and (B) PNA-LAMP<sub>ms1-1</sub>. Twenty-three samples were blind-tested for consistency between the assay and expected genotypes based on a sequencing analysis. The detailed protocol is available upon request to the corresponding author.

(A)



(B)



No.	Tree ID	genotype
1	Bijodaira14	<i>Ms1/Ms1</i>
2	Ashu13	<i>Ms1/Ms1</i>
3	Azouji34	<i>Ms1/Ms1</i>
4	Ishinomaki04	<i>Ms1/ms1-2</i>
5	Ashu14	<i>Ms1/Ms1</i>
6	Naka-4	<i>Ms1/ms1-1</i>
7	Shindai-11	<i>ms1-1/ms1-1</i>
8	Ajigasawa33	<i>Ms1/Ms1</i>
9	Ashu17	<i>Ms1/Ms1</i>
10	Azouji22	<i>Ms1/Ms1</i>
11	Shindai-3	<i>ms1-1/ms1-1</i>
12	Azouji25	<i>Ms1/Ms1</i>
13	Ashu01	<i>Ms1/Ms1</i>
14	Ishinomaki10	<i>Ms1/ms1-2</i>
15	Ajigasawa31	<i>Ms1/Ms1</i>
16	Fukushima-1	<i>ms1-1/ms1-1</i>
17	Shindai-12	<i>ms1-1/ms1-1</i>
18	Suzu-2	<i>Ms1/ms1-1</i>
19	Azouji24	<i>Ms1/Ms1</i>
20	Ooi-7	<i>Ms1/ms1-2</i>
21	Fukushima-2	<i>ms1-1/ms1-1</i>
22	Ishinomaki07	<i>Ms1/ms1-2</i>
23	Ajigasawa20	<i>Ms1/Ms1</i>