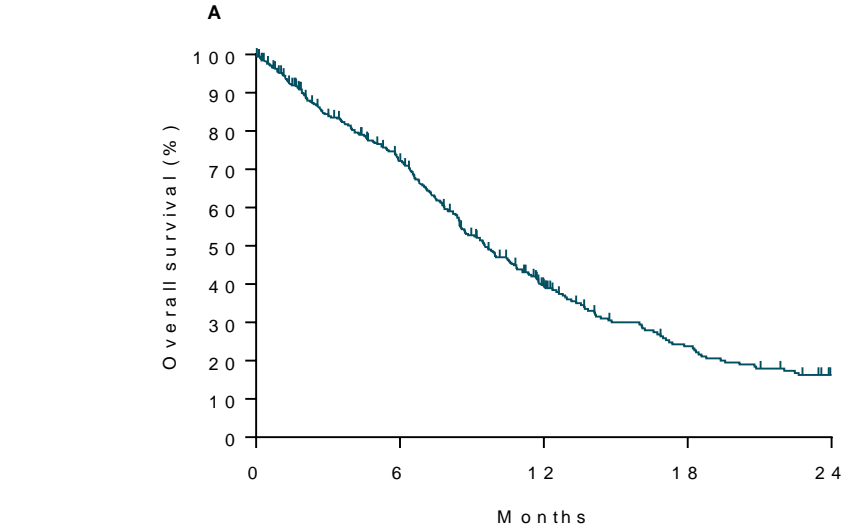


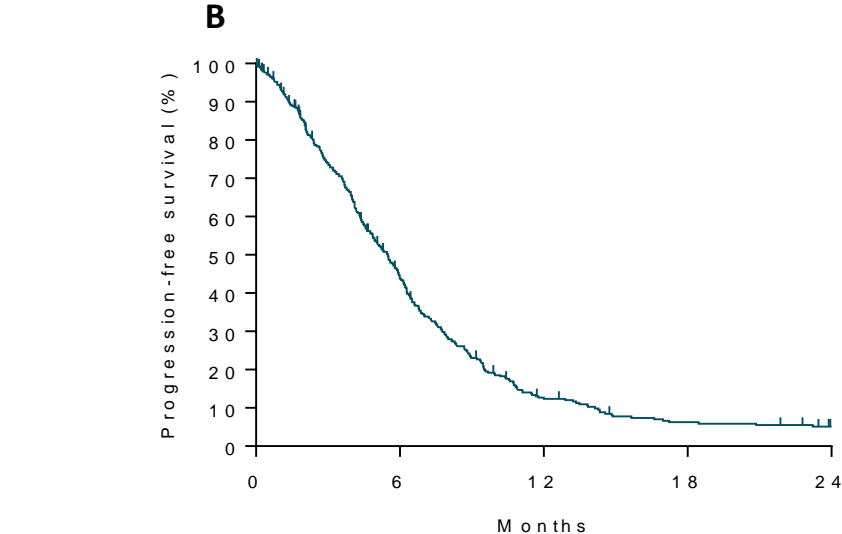
Supplementary Figure S4:

Survival analyses according to the Kaplan-Meier Method.



Number at risk

Total population	389	228	98	45	19
------------------	-----	-----	----	----	----



Number at risk

Total population	388	142	38	17	7
------------------	-----	-----	----	----	---

Kaplan-Meier curves for overall survival (A) and progression-free survival (B) for all patients (TAS cohort). One patient was excluded from the PFS analysis due to missing follow up.