

Immune-triggering effect of the foodborne parasite *Kudoa septempunctata* through the C-type lectin Mincle in HT29 cells

Ji-Hun Shin¹, Jung-Pyo Yang¹, Seung-Hwan Seo¹, Sang-Gyun Kim¹, Eun-Min Kim², Do-Won Ham¹ and Eun-Hee Shin^{1,3,*}

¹Department of Tropical Medicine and Parasitology, Seoul National University College of Medicine and Institute of Endemic Diseases, Seoul 03080, Republic of Korea

²Department of Environmental Medical Biology, Yonsei University College of Medicine, Seoul 03722, Korea

³Seoul National University Bundang Hospital, Seongnam 13620, Republic of Korea

Running title: Immune-triggering effect of *Kudoa* using Mincle

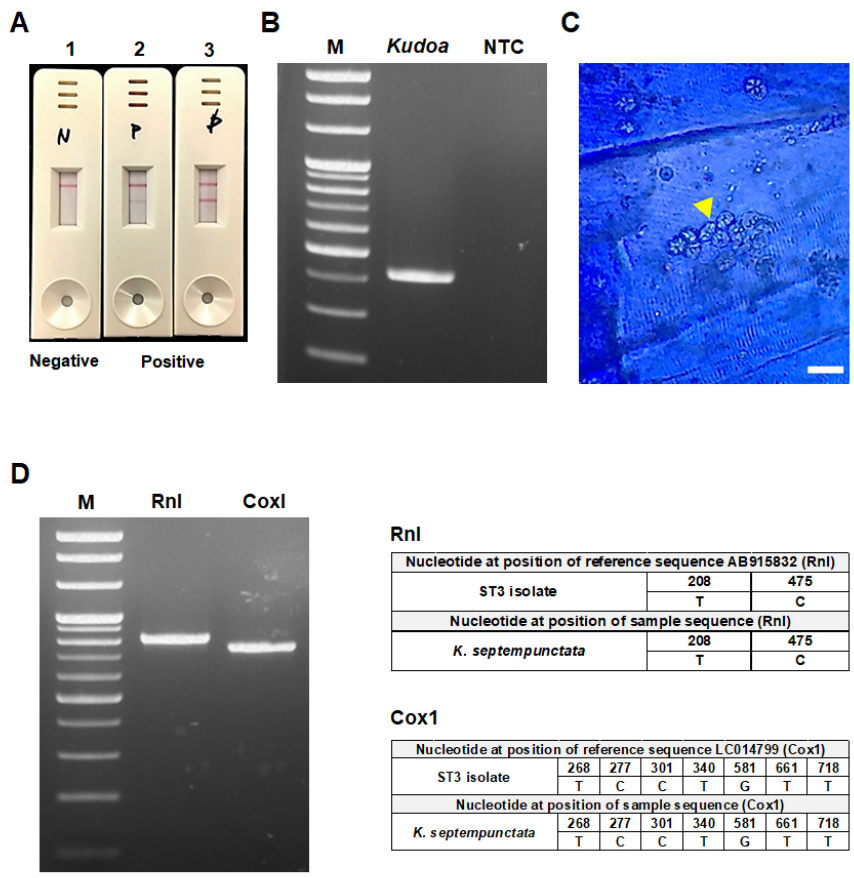
***Corresponding author:** Dr. Eun-Hee Shin, Department of Tropical Medicine and Parasitology, Seoul National University College of Medicine, Seoul 03080, South Korea

Tel: +82-2-740-8344

E-mail: ehshin@snu.ac.kr

Supplementary Table. Primer sequences

Gene	Forward primer (5'-3')	Reverse primer (5'-3')	Accession Number
<i>K. septempunctata</i> 28S rRNA	CGT CTC TTG TGC TGA TAT GTG TGT G	CAA GTC TAA CGA TCG ATT TGC ACG T	JQ302299
<i>Kudoa Rnl</i>	TGC CGT CAT TCT GTT GTA TT	AAT ACC CAT GCT GTG TTC AT	AB915832
<i>Kudoa Cox1</i>	TTT GTT CAT CGG CAC AAT TC	ATA GCC TGG AAC AAG GAA TC	LC014799
IL-8	CTT TCA GAG ACA GCA GAG CAC A	CAC ACA GAG CTG CAG AAA TCA G	NM_000584.4
NF-κB	GAT GGA ACC ACA CCC CTG CA	AGT CAT CCA GGT CAT AGA GAG	NM_001165412.1
IL-1β	ATG CAC CTG TAC GAT CAC TGA AC	ACC ACT TGT TGC TCC ATA TCC TGT	NM_000576.2
TNF-α	CAT GTT GTA GCA AAC CCT CAA GCT	GAG GAC CTG GGA GTA GAT GAG	NM_000594.4
CLEC4E	TAC GTT AGT CTC AGG TC TCT TC	CTC CGT GTC CCT GTA CTT TCA TA	NM_014358.3
GAPDH	GGT GAA GTC GGA GTC AAC GGA	GGT GAA GTC GGA GTC AAC GGA	NM_001256799.2



Supplementary Fig. 1. Detection of *Kudoa septempunctata* in olive flounder using a commercial kit and PCR.

(A) Rapid check of *Kudoa* infection using an immunochromatographic test kit. (B) Conventional PCR detection of *K. septempunctata* genotype ST3 (425 bp): lane 1, 100-bp marker; lane 2, genomic DNA of *K. septempunctata*; lane 3, negative control. (C) Microscopic observation of *Kudoa* spores consisting of six or seven shell valves and polar capsules ($\times 200$, Loeffler's methylene blue staining, yellow arrowhead (*Kudoa* spores), scale bar [25 μm]) (D) Confirmation of the *K. septempunctata* ST3 genotype via sequencing of *Rn1* and *Cox1*. The BLAST sequencing results and homology analysis of the *K. septempunctata* ST3 genotype.