

Pax6 regulates intra-retinal axon guidance and fasciculation of retinal ganglion cells during retinogenesis

Soundararajan Lalitha^{1,2}, Budhaditya Basu¹, Suresh Surya¹, Vadakkath Meera^{1,2}, Paul Ann Riya^{1,2}, Surendran Parvathy^{1,2}, Ani Venmanad Das³, Krishnankutty Chandrika Sivakumar⁴, Shijulal Nelson-Sathi⁵ and Jackson James^{1,2}*

¹ Neuro Stem Cell Biology Laboratory, Neurobiology Division, Rajiv Gandhi Centre for Biotechnology, Thiruvananthapuram, Kerala-695 014, India

² Research Centre, The University of Kerala, Thiruvananthapuram, Kerala-695 014, India

³ Cancer Biology Programs-12, Rajiv Gandhi Centre for Biotechnology, Thiruvananthapuram, Kerala-695 014, India

⁴ Bioinformatics Facility, Rajiv Gandhi Centre for Biotechnology, Thiruvananthapuram, Kerala-695 014, India

⁵ Interdisciplinary Biology, Rajiv Gandhi Centre for Biotechnology, Thiruvananthapuram, Kerala-695 014, India

Figure-S1

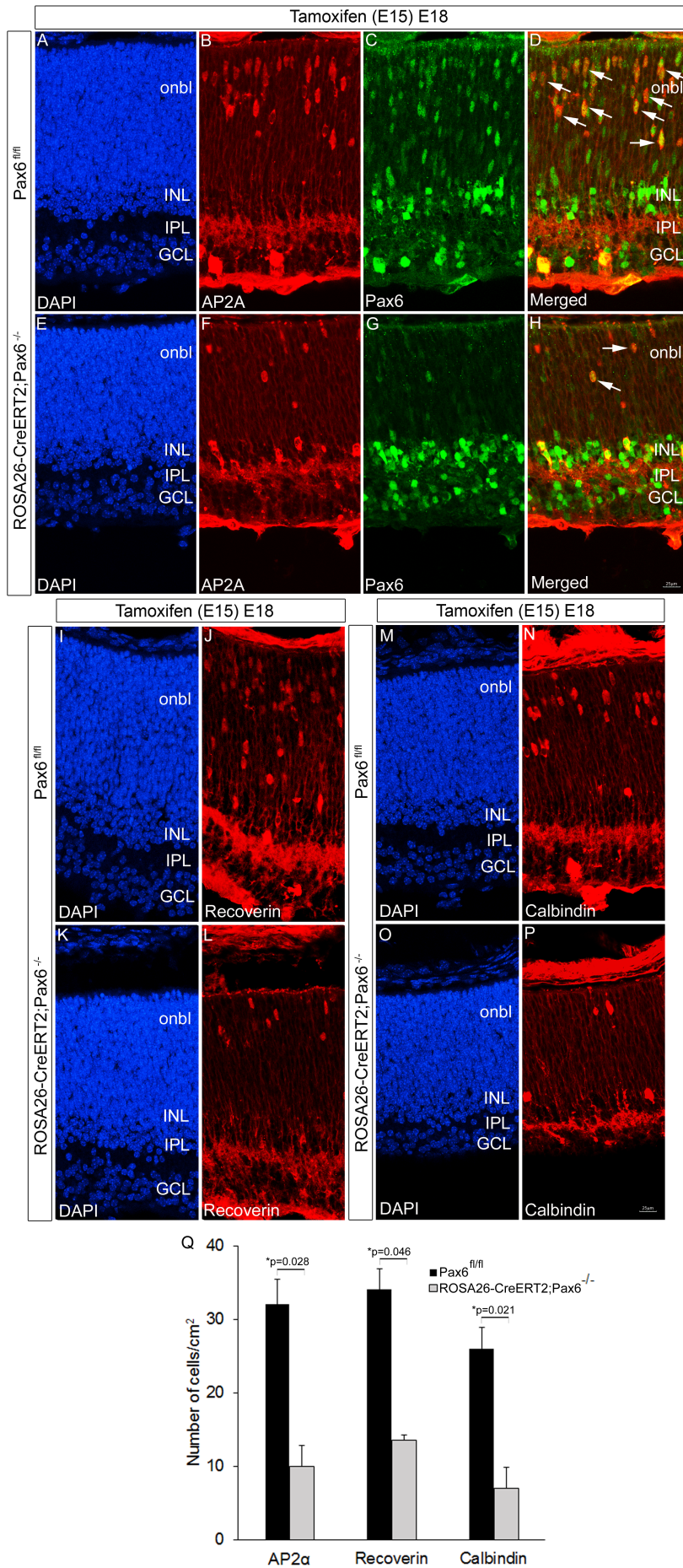


Figure-S2

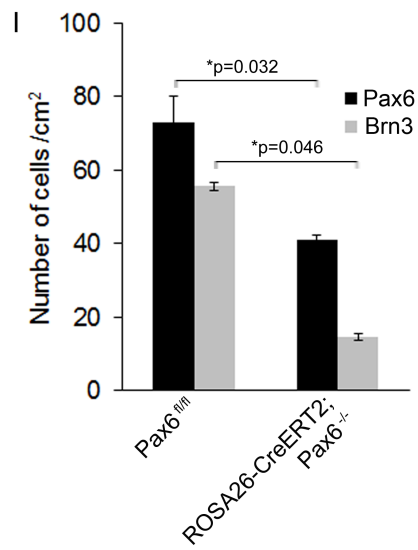
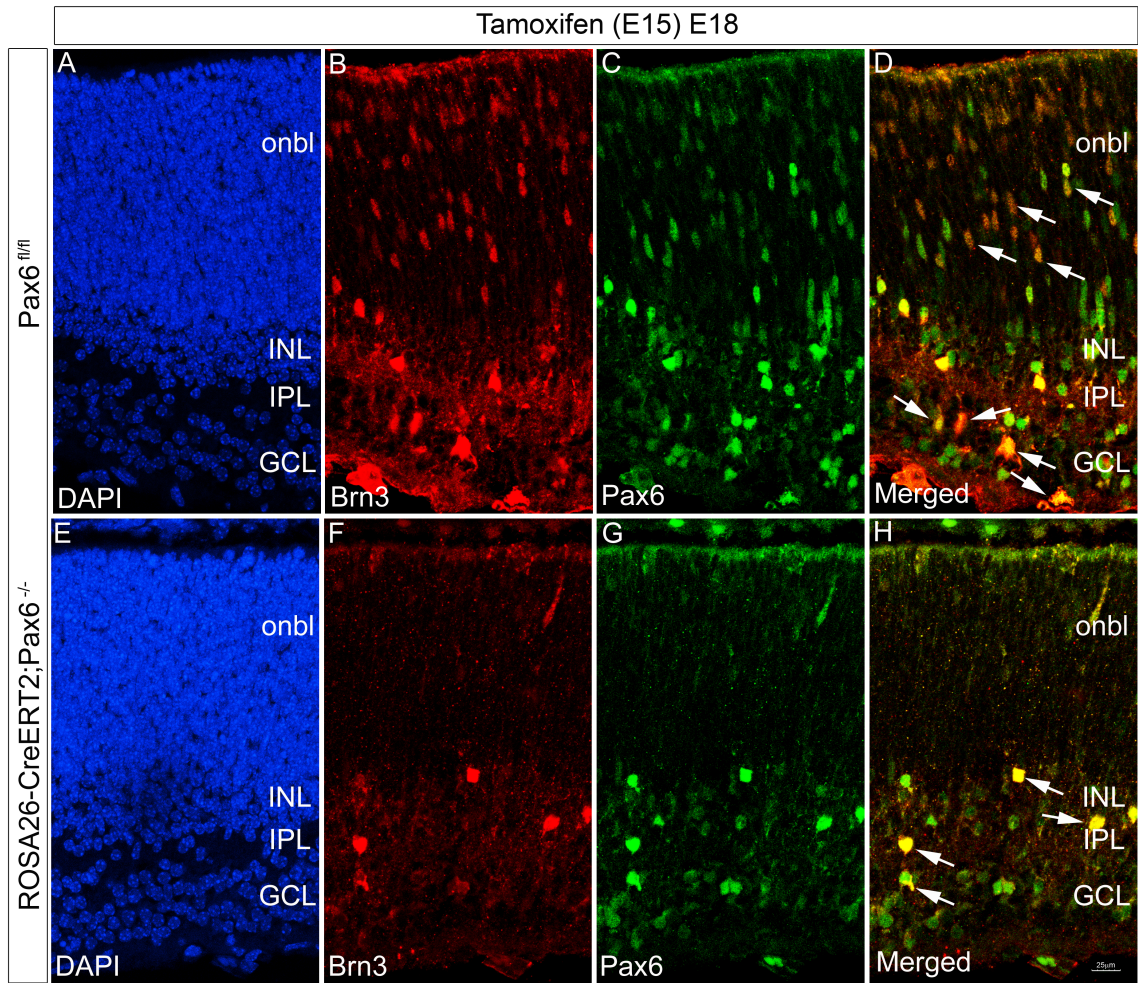


Figure-S3

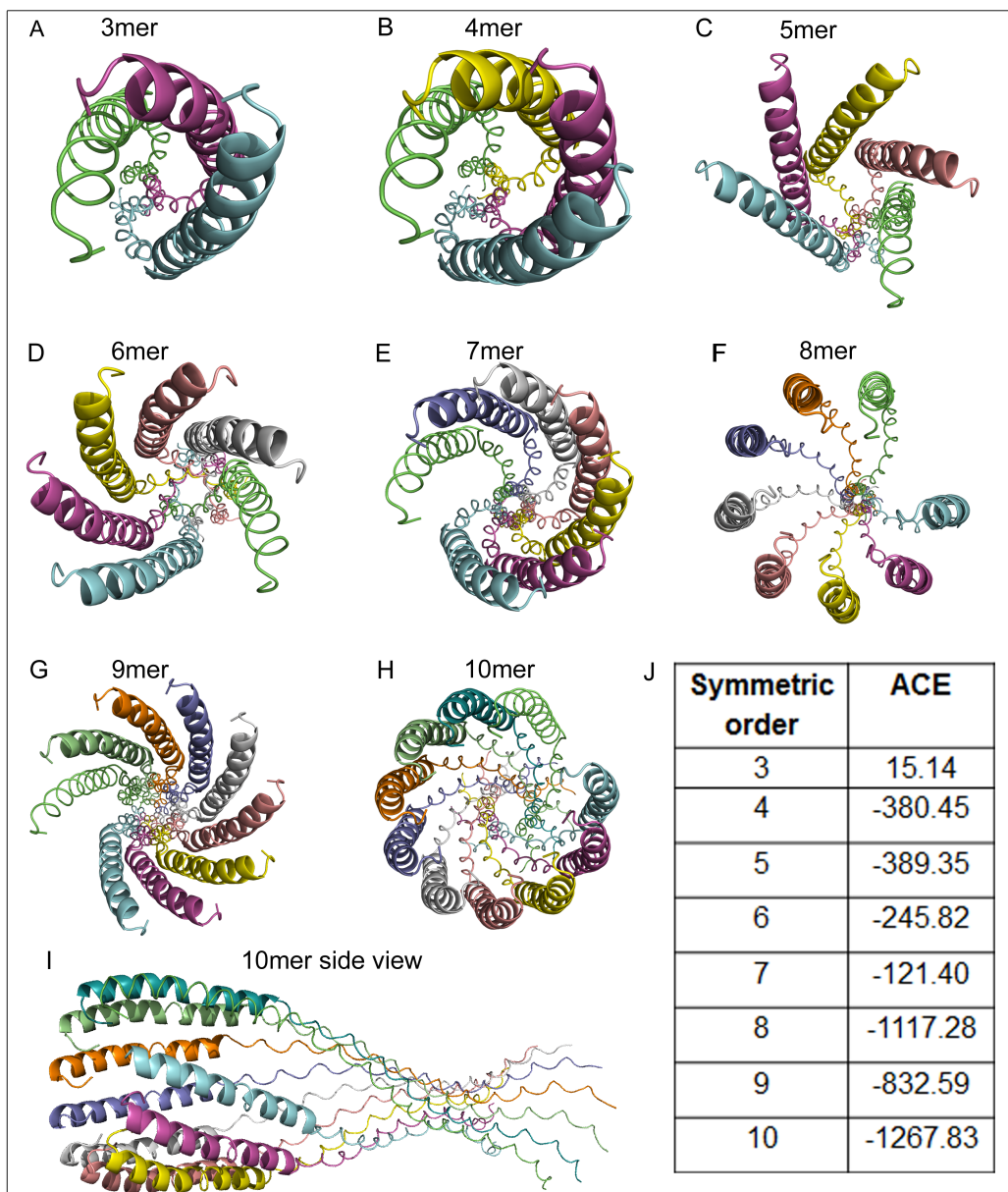


Table S4**List of primers used in the study:**

Primer	Sequence	Product size
Pax6 siRNA1 F	AAAAGCAGACGGCATGTATGATAAACTAAGGAT	
Pax6 siRNA1 R	AAAGATCCTTAGTTTATCATACATGCCGTCTGC	
Pax6 siRNA2 F	AAAACTCCTAGTCACATTCTATCAGCAGCAG	
Pax6 siRNA2 R	AAAGCTGCTGCTGATAGGAATGTGACTAGGAGT	
Pax6 siRNA3 F	AAAAGCCCAGCTTCACCATGGCAAACAACCTGC	
Pax6 siRNA3 R	AAAGGCAGGTTGTTTGCCATGGTGAAGCTGGGC	
Pax6 siRNA4 F	AAAAGGAGTGAACCTGACATGTCTCAGTACTGG	
Pax6 siRNA4 R	AAAGCCAGTACTGAGACATGTCAGGTTCACTCC	
Sema5b Promoter F	AAAGAATCTGGGGAGGGAAGGTGTG	2.5kb
Sema5b Promoter R	AGAGGCTGGACACTAAGAAAGGGG	
pPax6 ChIP F	AGAGCCGAAAACAAGTGTATTC	269bp
pPax6 ChIP R	ATTAGCGAAGCCTGACCTC	
pSema5B ChIP F	GTTCCAGGTCATGCAGTTC	274bp
pSema5B ChIP R	CTAACC GGGAATGAAAGATGG	
pEphB1 ChIP F	GCAGTTCTCCTAAATCACCAC	284bp
pEphB1 ChIP R	GTCACATTGCGAGCTACAG	
Pax6 fl/fl F	AAATGGGGGTGAAGTGTGAG	280 & 350bp
Pax6 fl/fl R	GGAGCAGTCCTTCACCTCTG	
Cre F	CGATGCAACGAGTGATGAGGTTC	345bp
Cre R	GCACGTTACCCGGCATCAAC	
Ephb1 F	ACGGAAGTCAGGAGCTTTG	303bp
Ephb1 R	CTCATAGCCAGGCTTACAGG	
Sema5b F	TGAGATTCCTGTCATCCTACC	310bp
Sema5b R	GTAGAAGTTGGCTCTGTCATC	
Pax6 F	CCAACGGTTGTGTGAGTAAATTC	258bp
Pax6 R	GCTTTTCGCTAGCCAGGTTGCGAAGAAC	
Beta actin F	AGACTTCGAGCAGGAGATG	322bp
Beta actin R	CTTGATCTTCATGGTGCTAGG	

List of antibodies used in the study:

Antibody	Dilution	Source	Identifier
Rabbit anti-Pax6	1:200	Millipore	(Millipore Cat# AB2237, RRID:AB_1587367)
Mouse anti-Pax6	1:200	DSHB	(DSHB Cat# pax6, RRID:AB_528427)
Goat anti-Brn3	1:100	Santa Cruz	(Santa Cruz

			Biotechnology Cat# sc-6026, RRID:AB_673441)
Mouse anti-Ap2 α	1:50	DSHB	(DSHB Cat# 5E4, RRID:AB_2056333)
Mouse anti-Recoverin	1:500	Abcam	(Abcam Cat# ab31928, RRID:AB_882309)
Mouse anti-Calbindin	1:1000	Sigma	(Sigma-Aldrich Cat# C9848, RRID:AB_476894)
Mouse anti-SMI31	1:1000	Covance	(Covance Research Products Inc Cat# SMI-31R-100, RRID:AB_10122491)
Rabbit anti- β III tubulin	1:500	Millipore	AB5564
Goat anti-Rabbit IgG (H+L) Cross-Adsorbed Secondary Antibody, Alexa Fluor 488	1:200	Invitrogen	(Molecular Probes Cat# A-11008, RRID:AB_143165)
Cy TM 3 AffiniPure F(ab') ₂ Fragment Goat Anti-Rabbit IgG (H+L)	1:400	Jackson Immunoresearch	(Jackson ImmunoResearch Labs Cat# 111-166-003, RRID:AB_2338007)
Cy TM 3 AffiniPure F(ab') ₂ Fragment Goat Anti-Mouse IgG (H+L)	1:400	Jackson Immunoresearch	(Jackson ImmunoResearch Labs Cat# 115-166-003, RRID:AB_2338699)
Cy TM 3 AffiniPure F(ab') ₂ Fragment Donkey Anti-Goat IgG (H+L)	1:400	Jackson Immunoresearch	(Jackson ImmunoResearch Labs Cat# 705-165-003, RRID:AB_2340411)